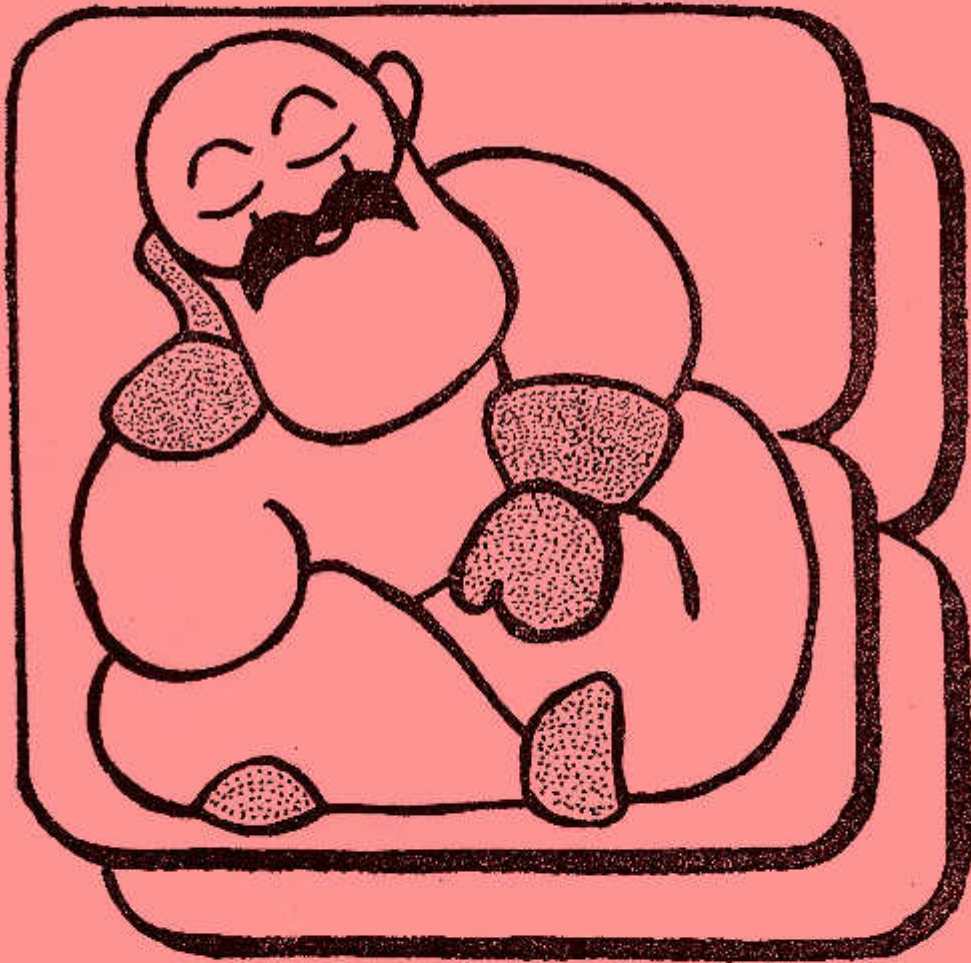


---

# BURWOOD BULLETIN

**A COMMUNITY NEWSLETTER**

---



BURWOOD, THE SLEEPING GIANT

---

## **CONTENTS**

COMING EVENTS AND ANNOUNCEMENTS

COMMUNITY REGISTER

AROUND & ABOUT - DISTRICT DEVELOPMENTS

BURWOOD HISTORY

# The Open Line



DIRECTORY OF NEWS AND INFORMATION  
ABOUT BURWOOD BULLETIN  
FOR READERS, CONTRIBUTORS, ADVERTISERS  
AND SPONSORS.

## THE "BULLETIN TEAM" FOR THIS ISSUE

CO-ORDINATOR: Mary O'Keefe, 11 Sylvan Cres.  
Ashwood, 3147 277 1397

EDITOR: Joan Warland, 78 Madeline Street,  
Burwood, 3125 29 2866

ARTWORK &  
ASSEMBLY: Sandra Holt

ADVERTISING: Jennie Hicks

ASSOCIATES: Liz Breit (Reporter), Betty  
Coker (Minute Secretary),  
Fran Downes, Edna Haley, Pat  
Lawson and Rosemary Pass  
(Treasurer).

## BEST WISHES TO GERALDINE MITCHELL!

Between this issue and the last, one of the events which the "Bulletin team" would have preferred to do without was the resignation of Editor Geraldine Mitchell, who has now moved from Burwood to Kyneton.

Geraldine was a pioneer of the newsletter and its Editor from the first issue in November 1980. Apart from uncounted hours at the typewriter, her interest and warm-hearted approach did much to expand our community contacts and help the Bulletin to grow.

We are sure that community groups and advertisers represented in the first issues will wish to join in thanks and best wishes to Geraldine and her family at their Kyneton home.

CONGRATULATIONS TO SANDRA HOLT, the newsletter artist, who designed the School Garden Calendar for 1982 on behalf of St Benedict's School, Burwood.

This calendar, with a month of diary space on each page, is illustrated with drawings of Australian native plants which grow and bloom in the School grounds. (See Page 14)

## THANKS TO CONTRIBUTORS

This issue includes items about a variety of community groups and services not previously mentioned in our pages as well as old friends from earlier issues.

News/Information items are not only welcome but essential for each issue. See Page 13 for the Application Form which we hope will help us, and busy office-bearers, to keep the record up to date.

Items other than advertisements are published free of charge although donations from groups and individuals are appreciated to help us cover costs. See details of our new Subscription Service next column.

## THANKS TO ADVERTISERS

To all advertisers, thanks again for your support which has enabled us to fill our advertising quota for this issue.

WE NEED FUNDING AND INFORMATION IN EQUAL MEASURE FOR THE CONTINUITY OF THE NEWSLETTER.

## NEXT DEADLINE

Friday, 28<sup>th</sup> May 1982.

## WHERE TO OBTAIN YOUR COPY OF BURWOOD BULLETIN

Copies of each issue, as published, are available by courtesy of the following major outlets:

Burwood Shopping Centre: Burwood District Credit Co-operative (Burwood & East Burwood offices), C.R.C. Bank, Barry Pearce Butcher, Foodmaster Supermarket and Burwood Post Office. (Smaller supplies are also available at other Burwood shops).

Ashwood/Chadstone: Drinnan's Milk Bar and High Street Road Milk Bar, Ashwood & Stockville Post Offices.

Limited numbers of each issue are also available at Bennettswood, Hartwell & Surrey Hills South Post Offices and shops in each of these areas.

Church distribution: Copies for congregations and associated groups are made available by arrangement with the following: St Benedict's, St Faiths and United Church (Burwood), St Scholastica's (Burwood Highway), St Michael & All Angels (Bennettswood), Burwood Heights & Lost Burwood United Churches, and St James (Wattle Park).

Recent arrangements have been made for distribution through Box Hill, Camberwell and Waverley Council libraries and community service centres. A house-to-house delivery has also been initiated in the Burwood Neighbourhood Group "P" under the auspices of the Box Hill Local Advisory Committee.

## DISTRIBUTION HELP INVITED

BURWOOD BULLETIN has an extensive area to cover both geographically and in its range of community contacts.

Volunteers with time to spare and a liking to be out and about would be welcome to help with the distribution to key places as well as to the schools, pre-school and infant welfare centres on the list. The Co-ordinator would be pleased to hear from you (277 1397).

## NEW SUBSCRIPTION SERVICE

A Subscription Service will be available for future issues, so that individuals and groups wishing to be sure of obtaining copies on a regular basis may become subscribers.

Please send your application, and remittance of \$2.00 to cover wrapping and posting, to: Editor, address above; or Mrs Rosemary Pass, 4 Avoca Court, Ashwood, 3147. This subscription will entitle you to receive the next three issues, posted to your address as published.

## CURRENT ADVERTISING RATES FOR BURWOOD BULLETIN

Half-page (horiz.)	180mm x 272mm	\$55
Half-page (vertical)	170mm x 100mm	\$55
Quarter-col.	90mm x 100mm	\$30
Mini-Ads.	34mm x 100mm	\$10

Sizes are for artwork, before reduction by printer. Prices subject to alteration. Discount for 3 issues booked in advance. Photographic plates extra. Artwork to be supplied by client, where possible.

PHONE EDITOR 29 2666 TO BOOK SPACE NOW  
DEADLINE FOR ADVERTISEMENTS - 30TH APRIL

# COMING EVENTS



**90X HILL:** More than 400 volunteers will be visiting homes in the Box Hill district during the RED CROSS CALLING DOOR-KNOCK APPEAL on 13th and 14th March.

The Chairman of the Box Hill Citizens' Red Cross March Appeal Committee, Mr Stan Dewar, said that nearly \$15,000 had been collected in last year's appeal and the Committee is hoping that residents will respond generously to this cause again this year.

Since 1952, a total of \$212,982 has been raised throughout the municipality in Red Cross Calling Appeals.

Volunteers are needed to assist in the appeal. Anyone who can spare a couple of hours to call on 20-25 homes, particularly on Sunday, 14th March, is asked to contact:

*Mr Harry Mullen, Area Organiser: 836 4836*  
*Mr Stan Dewar, Chairman: 89 3232*  
*Mr Phil Pinsky, Secretary: 89 4798 (B.H.)*

**CAMBERWELL:** Neighbouring Camberwell also has an excellent record of service to the annual Red Cross Calling Appeal. The Committee seeks volunteer door-knockers for 13th and 14th March and particularly hopes to hear from school, Sunday school, church and sports groups ready to help.

The more the collectors, the better the results on the board! Groups and individual volunteers are invited to contact *Mr J. Hicks, Area Organiser 836 0435.*



A Family Life Seminar has been arranged jointly by the Mission of St James & St John and the Mothers' Union to be held at Melbourne Church of England Girls' Grammar School, 82 Anderson Street, South Yarra on Saturday, 24th April from 10:15 a.m.

It will feature the films of Dr James Dobson entitled The Strong-Willed Child; Shaping the Will; The Origins of Self-Doubt; and Peer Pressure & Sexuality.

It is not meant to be a parent training session but rather to provide an opportunity for parents and others interested in children to assess the merit of the Dobson theory in the light of their own experience and circumstances.

There will be time for comments and discussion, with a panel to whom questions may be asked.

The admission of \$3.50 per person will include a sandwich lunch. It is necessary to register for this seminar in advance, by 10th April.

Registration forms may be obtained by sending a stamped, addressed envelope to Mrs Audrey Dobbie, 245 Warrigal Road, Burwood, 3125. (288 2113).

INVITATION  
TO  
FAMILY LIFE SEMINAR  
24TH APRIL, 1982



24th March: CHADSTONE CHARITY DAY, Shopping Centre Mall from 9:30 a.m. - 4 p.m.

On this day the Chadstone Shopping Centre Merchants' Association invite 20-25 community groups to conduct stalls where crafts and novelties, plants and cakes raise funds and publicise their work.

"Australia Fair" will be the general theme for this year, with all stalls to be dressed in red, blue and white. Prizes are awarded for "best dressed" stalls. Worth a special trip to Chadstone on this colourful bargain day!

The seventeenth annual art show organised by the Camberwell Rotary Club will be held at the Camberwell Civic Centre from Saturday 24th - Friday 30th April.

It will be open 10 a.m. - 10 p.m., each day except 30th, when viewing hours will be 10 a.m. - 6 p.m.

This art show has built up its own prestige over the years and entries come from interstate and many parts of Victoria. Entry forms are available from P.O. Box 80, Balwyn, 3103. Entries close on 3rd April.

Camberwell Rotary Club will apply profits from the Art Show towards the \$20,000 committed to its pilot scheme to house disabled people in the City of Camberwell.

A Council-owned house at the Junction will be fitted out to accommodate young people in wheel chairs, enabling them to live independently instead of in nursing homes or institutions.



# Coming Events



Australian Institute Of Genealogical Studies Inc.

## IN SEARCH OF A HERITAGE

The Australian Institute of Genealogical Studies, Inc. promotes and encourages the study of genealogy, heraldry, family history and allied subjects and assists members in their research.

In the coming months, the Institute has planned four meetings to be held at the Box Hill Library, 1040 Whitehorse Road at 8 p.m. on the following dates:

- 10th March: Genealogical Resources of the Kew Library (Alex Farr)
- 14th April: Record of War Graves, Boer War and First World War (John Price)
- 12th May: Members' Night, Problem Solving
- 9th June: Myths and Realities of Scottish History Post 1700, Part II (Neil Cameron)

These meetings are free and may be attended by non-members.

### BEGINNER'S CLASS ON 17th APRIL

UNITING CHURCH HALL, HARTWELL

At the Institute Library, opp. Eddy Street & Halley Avenue, Hartwell from 12 noon - 2 p.m. with use of Library until 5 p.m. on 17th April.

This is an opportunity to learn something of the Institute's work. Admission: Free to members, \$1.00 non-members. Those who attend are asked to bring pen, paper and cut-lunch.

For membership information and further enquiries, write to: P.O. Box 68, Balaclava, 3166; or telephone 878 0711 (A.H.)

## CAMBERWELL MUSIC SOCIETY CONCERT DIARY

A season of seven outstanding Saturday evening concerts will be presented monthly at St John's Parish Centre, Camberwell Junction from April to mid-October.

On 17th April works by Haydn, Rossini, Stamitz and Jadin will be presented by The Concentus Fuserble-Neil Stafford (oboe), Jean Penny (flute), Marla Swift (clarinet), Trevor O'Carroll (horn), Amanda Lee (bassoon).

On 29th May Leon La Cruz (violin) and Murray Sharp (piano) will present a recital of works by Beethoven, Franck and Dohnanyi.



195 Through Road Buxwood 3125  
Phone 836 9453

A.H. Phone 288 3794, 509 5236

### Gallery Hours

Tuesday-Friday 10.00 am - 4.30 pm  
Saturday 9.30 am - 12.30 pm  
Sunday by Appointment

Jan Hopkins, Helen Jenke,  
Joy McConno & Mitsi Morrow

## Camberwell Music Society, continued

On June 12th (in St John's Church) the Tele-manus Fuserble-Jean Stockigt (baroque oboe), Ian Donald (baroque flute), Cordula Neil (cello), Douglas Lawrence (baroque chamber organ and harpsichord) and guest performer, Simon O'Loughlin (tenor) - will play work by Bach, Handel, Telemann, Purcell and Loeillet.



Single Admission, each concert: \$6, pensioners and full-time students, \$3.

Generous subscription rates of \$30, pensioners and full-time students, \$15, family members, \$25 each adult. Subscribers notified about Society's social events.

### MOORING CONCERTS

Four morning programmes by leading musicians will be presented from 10:30 a.m. at St John's Parish Centre on Wednesday, 14th April, 5th May, 23rd June and 14th July. Admission, per concert: \$2, pensioners, \$1. Group bookings at concession rates are offered to adult groups and schools for whom these concerts can be a welcome musical experience.



On 14th April, programme by Elizabethan Brass trio - Richard Bannock (horn), Phillip Davis (trombone) and Robert Smithies (trumpet).

On 5th May, popular duets with piano and folk repertoire with guitar accompaniment by Margot Cozy (soprano), Graeme Wall (tenor), Irene Wall (accompanist).

On June 23rd, a Cello Recital will be presented by Rosanne Hunt (cello) and Ian Munro (piano) in works by Bach, Brahms and Faure.

For reservations and enquiries contact Margaret Sharp 29 3935.

## ZELMAN MEMORIAL SYMPHONY ORCHESTRA 1982 SUBSCRIPTION SERIES

THURSDAY	6 MAY
MONDAY	26 JULY
MONDAY	27 NOVEMBER

Camberwell Civic Hall

At the May concert it is proposed to perform works of Kabalevsky, Mahler and Sibelius. The soloist will be mezzo soprano Ruth Gurner.

For \$15.00 subscribers will receive seven undated tickets to cover the three 1982 concerts and these may be used in whatever way suits the subscriber. Any ticket may be used for any concert. Inquiries to Mrs J. Johnson, 70 7506.

## Theatre News - THERE GOES THE BRIDE

The Waverley Theatre season of *There Goes The Bride* will be held on Thursday, Friday and Saturday, 6th-8th May at the Monash High School Theatre opp. Duerdin and Mastilla Roads, Clayton North, with a Gala Supper performance on Saturday, 8th May.

*There Goes the Bride* by John Chapman and Ray Cooney will be produced by Suzanne James.

Reservations and group bookings for community groups open now on enquiry to ticket secretary: Esther Cross 777 4153 or Anne Lawrence 737 8968.

THE DEEP BLUE SEA by Terence Rattigan will be presented by The Rowell Players for a season at Camberwell Civic Centre from 5th-8th May, 8.15 p.m., with matinee, 2 p.m. 8th May. Evening tickets, \$4 - family and group concessions available. Matinee tickets, all at \$2 each. Bookings 211 5297.

Stop-Press



## District Developments



VICTORIA COLLEGE  
AND  
COMMUNITY EDUCATION

Over sixty courses ranging from one day to twenty-six weeks are being offered to the community by the newly-established Victoria College and Prahran College of T.A.E.F.

Four Colleges of Advanced Education - Burwood, Prahran, Rusden and Toorak - have amalgamated to become the new multi-campus, multi-disciplinary Victoria College.

As the Co-ordinator of the Community Programmes for Victoria College, Ms Sam Thomas said "With the amalgamation of the Colleges in the eastern and south-eastern suburbs, we have been able to strengthen our services to the community."

Courses now in progress at the Burwood campus include various arts and crafts, dance, life skills such as stress management, parent effectiveness training, folk guitar and wine appreciation.

Requests for information about fees and enrolment for courses starting later in the year may be sent to Prahran College of Advanced Education, 142 High Street, Prahran, 3181. Telephone 529 2885.

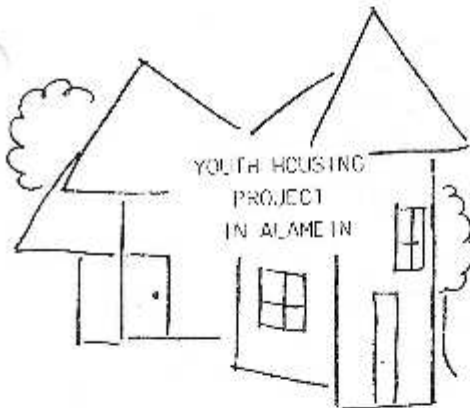
At a public meeting held last September, chaired by Camberwell councillor Dorothy Laver, a Camberwell Emergency Relief Fund was brought into being, a constitution was adopted and a committee elected including representatives of service clubs, churches, community and welfare groups.

The President elected was Mr Don Brindley, representative of the Lion's Club of Camberwell which undertook to co-ordinate fund-raising to back the project for which a target of \$10,000 was set for the first year.

The aim of this emergency relief fund is to collect monies which will be used to re-imburse welfare groups providing emergency payments to Camberwell families, thus extending the level of aid available for others in lines of need.

These organisations will need to register with the fund to be eligible for re-imbusement and applications should be sent to Lyn McConnell, Secretary, Camberwell Emergency Relief Fund, 19 Fairholm Grove, Camberwell, 3124. (Telephone 82 5145)

Individuals and groups interested to contribute to the fund-raising, are invited to write to the President, Mr Don Brindley, c/- 19 Fairholm Grove, Camberwell, 3124.



The Alamein Community Committee has been successful in its submission to the Ministry of Housing to establish and manage a house under the Youth Housing Programme.

Under this programme, the Ministry will purchase a house and lease it to a community organisation - in this case the Alamein Community Committee - to provide shared accommodation for young people. A suitable house is presently being sought.

The aim of this project is to offer an opportunity for young people to live independently, learning how to manage household finances and carry out normal household duties. The house will have a support worker in residence.

The Alamein Community Committee will appoint a Management Committee to oversee the project, select tenants, collect rent, liaise with the Ministry of Housing and obtain funding and donations to ensure that the project can operate satisfactorily.

Community support is being sought for the outfitting and furnishing of the house and towards the payment of rent and food for the live-in support worker.

For further information, contact Ineke or Frank, Alamein CYSS, 25 2413.

### O'HAN'S Hammer Hardware

General & Builders' Hardware  
Handyman Specialist  
Repairs to all Electrical Appliances & Radios  
21 Burwood Highway, BURWOOD. Phone 288 6822

### Puss in Boots Shoe Repairs

19 BURWOOD HIGHWAY, BURWOOD. 288 3767



## District Developments

# ASTRA BURWOOD TRAVEL

1386 TUORAK ROAD, BURWOOD.



PHONE: 29 3715  
TELEX: AA31410  
POSTAL ADDRESS:  
P.O. BOX 44 BURWOOD 3125

## BIG NEWS!

ASTRA BURWOOD TRAVEL IS NOW COMPUTERIZED!

INSTANT BOOKINGS AND TICKETING FOR

- \* ALL AIRLINES
- \* ALL TOURS
- \* ALL CRUISES
- \* ALL HOTELS, ETC.

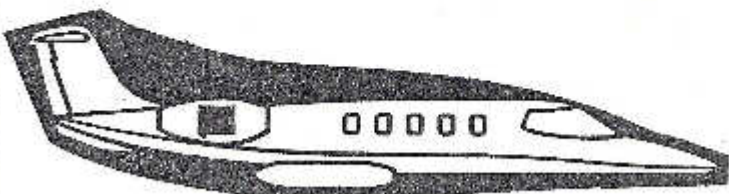
COMMERCIAL ACCOUNTS: This is to your great advantage.

BOOK LOCALLY

OUR FACILITIES WILL SAVE YOUR CALL TO ANY AIRLINE OR TRAVEL ORGANIZATION.

ASTRA BURWOOD TRAVEL IS MODERNISED!

THE WORLD IS YOURS WITH ASTRA BURWOOD TRAVEL



### STEPS TO NEW BURWOOD COMMUNITY RESOURCE

At a Public Meeting held on 23rd November last year, the Burwood Living and Outreach Group, publishers of BURWOOD BULLETIN, took the first steps towards the goal of establishing a neighbourhood house or learning exchange in Burwood.

This kind of community development is taking place in many districts. It is a means of bringing people and a variety of skills together and, particularly, encouraging the sense of belonging and contributing to a community in a way that is in danger of being forgotten in our fragmented urban society.

A meeting of the group was held on 9th February leading to a further clarification of aims:

- a) that this new resource should be centred on the family as a whole (rather than separate men's, women's or youth groups or senior citizens) and that there should be opportunities for both children and adults to enjoy new learning experiences and recreation, with child minding available for babies and toddlers.
- b) that effort would be made in the first stages to make use of existing community facilities in the way of halls and meeting places, so that there would be a variety of locations. With the support of volunteers, the widest possible "open line" would be sought, including evenings and week ends.

Members of the group will visit neighbourhood houses in adjoining areas to increase their knowledge of alternative means of developing such a project. Anyone interested in participating is invited to contact Betty Coker, 288 2683 or Marg O'Keefe, 277 1397.

\* DATE OF NEXT MEETING \*

8.00 p.m., 15th March

R.S.L. HALL, BURWOOD

All Welcome

### HELP FOR NEWCOMERS TO SETTLE IN

Although Frank Kennedy arrived from Scotland twenty years ago, he is still well aware of the problems of settling in a new country.

Mr Kennedy heads a newly-formed Community Welfare Team under the Department of Immigration and Ethnic Affairs. Facilities for the operation of this project have been provided by the Box Hill Council.

The project team includes Mr Kennedy, based at the Council's Community Services Department, 5 Bank Street, Box Hill; and two settlement officers, Ramee Jayawardena and David White, at the Eastbridge Migrant Centre, Banks Road, Nunawading.

The team offers assistance for any problems associated with settling in a new community. These include housing, employment, language classes, citizenship and sponsorship. A telephone link between Mr Kennedy's Box Hill office and the Telephone Interpreter Service allows him to communicate with those unable to speak English.

The project team covers an area from Camberwell, Doncaster and Box Hill through to Blackburn, Lilydale, Jerutree Gully and extending as far as Sherbrooke.

Contact Mr Kennedy on 88 2700; settlement officers on 871 1397.



## District Developments

### HOUSING FOR ASHBURTON SENIOR CITIZENS

The Ashburton and District Senior Citizens' Welfare Association and the Glen Iris-Ashburton Inter-Church Council, are well on the way with plans for the building of apartments for senior citizens near the Senior Citizens' Centre, High Street, Ashburton (City of Camberwell South Ward.)

These apartments will provide self-contained living units, each with a private entrance, and will be available for Camberwell residents, preferably South Ward citizens, according to need.

Those allocated to residence will not be asked to subscribe any ongoing body but will be responsible for the payment of a weekly rental sufficient only to meet day-to-day running expenses.

As a first stage, eight or ten units will be built but the organisers look forward to further building in the same area since this type of accommodation meets such an important social need.

#### APPEAL FOR HELP

One interested citizen has arranged her estate to provide a substantial legacy for this project and her gift will be recognised by naming the first units in her honour.

Other help has also been forthcoming, and as the project proceeds, increased support in cash or kind for this worthwhile community endeavour will be welcomed. Enquiries about ways individuals and service organisations could help may be discussed with Mrs Pam Parnell, Ashburton Senior Citizens' Centre, 25 4815.

### PLUS AND MINUS AT WATTLE PARK PRIMARY

The beginning of a new school year has meant one plus and two minuses for the Wattle Park Primary School in Warrigal Road, Burwood.

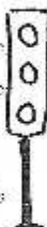
The school has acquired a new principal, Mr Ian Dunne, but because the enrolment number has dropped below 200 pupils, the school has lost its secretary and half time librarian.

With a population of 180 and classes catering for grades 1-2-3-5-5-6 and a Grade 6, the children no longer have the service of a library. Mr Dunne has the job of deciding what to do with the facility which presently lies idle.

Mr Dunne comes to Wattle Park after experience at other primary schools and as an Acting Education Officer with the South Eastern Metropolitan Regional Office. His wife, Heather, is a lecturer in child care studies at the Prahran College of T.A.E.F.

### NEW TRAFFIC LIGHTS AT ASHWOOD

Ashwood residents who have long had to take their courage in both hands to cross busy Warrigal Road for their shopping appreciate the prospect of new pedestrian crossing lights to help them. They also appreciate the effort which the Ashwood Chamber of Commerce made, in collaboration with Camberwell and Waverley Councils, to have this service provided.



### NICK'S FRUITLAND

- \* FRESH FRUIT & VEGETABLES DAILY
- \* BEST QUALITY AND VARIETY
- \* FARM-FRESH EGGS
- \* ORDERS & DELIVERY AVAILABLE FROM 5.30

1400 Lorak Rd. Burwood 3125 Phone: 294041

## T.S.T. FURNISHERS PTY.LTD.

(Tan Trethowan)

1383 TORAK ROAD, BURWOOD Telephone 29 1180

FOR CURTAINS, TRACKS, BLINDS AND LININGS, ETC.  
FREE MEASURE AND QUOTE

## \*\* ANNOUNCEMENTS \*\*



ORANA—

A WAY TO HELP

ORANA'S YOUNG PEOPLE

Young people in care often have a particular difficulty in finding a place in the work force.

Help is urgently sought from thoughtful employers who would be willing to offer WORK EXPERIENCE to adolescents of Orana Peace Memorial Homes on a full-time, part-time or casual basis.

This is a well-supported programme. Clear directions and guidance will be available to prospective employers on request to the Education Officer, Brenda Fitzpatrick, 258 6111.

### KEEP IN TOUCH WITH ORANA DEVELOPMENTS

ORANA- The Peace Memorial Homes for Children at 57 Ugar Road, Burwood is part of the Waiving Church Division of Community Services.

Orana has its own well-established identity in the district and for a long time has been the recipient of help from congregations and community groups, but there is always scope for a fresh view of its work.

Information about Orana is available for churches, schools and interested groups in the form of pamphlets, audio-visual material and a standing display which can be set up at appropriate public events. (Due notice is needed for the provision of these materials).

Groups in a particular district may wish to collaborate in assembling a good audience for a speaker from Orana. There is much of interest to hear about the development of the Homes and their services.

In order to conserve funds, groups inviting a speaker are requested to contribute to travel costs.

Telephone 258 6111 for further details.

## RSPCA

### KITTEN FOSTER PARENTS NEEDED

The R.S.P.C.A. Rescue Centre, East Burwood, gave sanctuary to 561 animals in September, 916 in October, 1,167 in November, 1,444 in December and 1,369 in January - an increase of 35% over figures for the same period in the previous year.

Because of the increased numbers of animals needing protection, extensions to the Rescued Animal Shelters are to be built as soon as possible.

Animal lovers in the area could give emergency help as Kitten Foster Parents for a period of five days during the breeding seasons.

Volunteers are invited to get in touch with the Shelter (258 5553 during working hours) to leave name and telephone number. They will be contacted with details of procedure, as required.



# \*\* ANNOUNCEMENTS \*\*



it's free!



CAMBERWELL-WAVERLEY  
REGIONAL LIBRARY

## SUNDAY AFTERNOONS AT THE LIBRARY

There's something for the whole family at Camberwell Branch and Reference Library between 2 and 5 p.m. on Sunday afternoons.

Qualified librarians are on duty to assist with information, book selection or enrolment of new members. The children can play with jigsaws, puzzles and toys or choose books, magazines, posters and cassettes on loan.

### STORYTIME FOR 3-8 YEARS



These are held monthly from 4-4:10 p.m. at these Branch Libraries

On the 2nd Thursday in month at Ashburton Branch, 154 High Street, Ashburton

On the 2nd Tuesday in month at Camberwell Branch, 360 Camberwell Road, Camberwell

Also at Mount Waverley Branch (dates from Library).

Storytime programmes may include puppets, songs, poems, finger plays and games as well as stories.

### LIBRARY CLUB 8-12 YEARS

From March, Library Club Meetings are held once a month at Camberwell or Mount Waverley Branches with films, activities and speakers. Speakers include authors, illustrators, or an authority on dinosaurs, puppets or kite-making.

Brochures of dates and times are available at the Libraries and new members are cordially invited to attend.

## PIANO LESSONS WITH A DIFFERENCE

Geraldine Moloney who currently teaches group piano at secondary school level, is now offering lessons to private students in a Burwood home.

Here are piano lessons with a difference because small groups of students may learn together, each with a separate piano, or individually.

Day or evening classes can be arranged for adult beginners or more advanced students and monthly performance sessions are offered free to those wishing to try their skill in public.

For further details contact  
Geraldine 299 2228.

## Cards 'n Things

EASTER'S JUST AROUND THE CORNER!  
SEND A CARD TO SHOW YOU CARE

ALL TYPES OF CARDS AND GIFTS  
POSTERS AUSTRALIAN PRINTS  
"PLAN A PARTY" PRODUCTS

For Friendly Service see LEONIE  
SHOP 3, BURWOOD ARCADE, 1405 TOORAK RD,  
BURWOOD. PHONE 29 7157

## Regal Cabinets

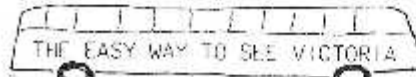


6 DUFFY STREET, BURWOOD

SPECIALISING IN . . .

BILLIARD LIGHTS, WALL UNITS,  
HI-FI AND STEREO CABINETS,  
CUSTOM-BUILT FURNITURE,  
ALL TYPES OF SPEAKER-BOXES,  
CHILDREN'S TABLES & CHAIRS.

PHONE 288 4107



THE EASY WAY TO SEE VICTORIA

The right connection for people who wish to see more of their own State, the Burwood-based RAIL-COACH TOURING ASSOCIATION is a non-profit organisation operating reasonably-priced day tours of historic and scenic interest in many parts of Victoria.

As the name suggests, both rail and coach trips were originally arranged. Travel is now by air-conditioned coaches and a different trip is offered each month. There are even some local pick-up and alighting points for travellers in the Burwood area.

Early notice of tours ahead can be posted to you for a year, by sending name and address, with remittance of \$3.00 to defray mailing costs to: R.C.T.A., 11 Chandler Grove, Burwood, 3125.

R.C.T.A. Sunday Trips: 21st March, Benalla-Whitfield; 15th April, Birthday Mystery Tour.

### 'Y' WOMEN - BOX HILL

This group carries out a very varied and active programme well chosen to meet the interests of the members.

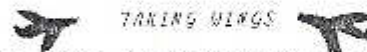
Activities planned for coming months range from cookery and crafts to community service (Meals on Wheels), talks on various topics and social functions.

Meetings are held at the Box Hill Salvation Army Hall, cnr. Harrow & Station Streets on 1st, 3rd and 4th Tuesday of each month, 9:30-11:30 a.m. For further information contact Maria Loxton, 233 2006.

### New Members Welcome

THE BURWOOD 30th TENNIS CLUB members play at Burwood Courts in Warrigal Road (near Bath Road) on Wednesdays. The Club has places for new players either competition or social. Contact Mrs Ambler Blank, 29 1408 - she'll be pleased to hear from you.

BURWOOD RED CROSS UNIT meets 1:30 p.m. on 3rd Monday in month at St Faith's Church Hall, Charles Street. Informal afternoons, with guest speakers or demonstrations and afternoon tea. NEW MEMBERS MOST WELCOME. Contact Mrs Rose Campbell, 285 1641.



TAKING WINGS

Shortly after the last issue of BURWOOD BULLETIN was distributed, a Burwood traveller on a plane from Hobart to Melbourne was intrigued to see a copy of the newsletter emerging from a brief case and being read by a fellow-passenger. It would seem that the last issue travelled further than our expected geographical boundaries.



## Camberwell Potters

This group of women potters, thirty in number, all have their own facilities for making and firing their work in their own homes or studios and meet together once a month for discussion and interchange of ideas.

The group was formed just over twenty years ago mainly from the Camberwell area but now extending to a number of the Eastern suburbs. The aim was, and still is, to encourage and improve the standards of the members' work and to share the enjoyment of the craft with others.

Although there are no vacancies at present, the Camberwell Potters have been holding two annual shows, a Moomba Exhibition at the Kintore Epilepsy Centre, Cor. Burke Road and Kintore Street, Camberwell on March 5-6, to aid the Epilepsy Foundation, and one approaching Christmas at Chadstone Shopping Centre.

This year the group will also exhibit at the Stonehouse Studio in Warrandyte in late Sept. For further details of these shows contact Mrs M.J. Darlow, 5 Bradley Avenue, Vermont, 3133. Telephone 874 6651.



**BURWOOD DISTRICT CREDIT**

**CO-OPERATIVE LIMITED**

1433 TIGORAK ROAD BURWOOD

NOTICE BOARD

AVAILABLE FOR COMMUNITY USE

**Michael Novak Photography**

OFFERS YOU

**• EASTER SPECIAL •**

ON FAMILY PORTRAITS

**FREE SITTING**

**FREE 5" x 4" PRINT (value \$27)**

OFFER Expires April 16th.

PLEASE CALL **288 5542** FOR YOUR APPOINTMENT

Cor. Warrigal Road & Burwood Highway  
(Upstairs)

**VOLUNTEER PIANIST WANTED ON WEDNESDAYS**

The Concert Party of the Ashburton Senior Citizens' Club is in urgent need of a pianist for practices on Wednesday mornings. Club facilities available for lunch and afternoon. Contact Mrs A. Sanders at Club, 25 3915.

## Justices of the Peace (J.P.'s)

MOORE WAVEBURY AREA

Mr L.H. Frise, 217 Lawrence Rd.	232 7412
Mr R.R. Hatch, 2 Brimar Crt.	277 3625
Mr J.G. Lane, 18 Leeds Rd.	233 4664
Mr J.V. Owen, 452 High Street Rd.	277 9269
Mr J.D. Robinson, 12 Yarrabee Crt.	277 5453
Mr V.D. Stewart, 33 St Albans St.	277 5857
Mr F.T. Tunno, 20 Aldrin Drv.	233 2169
Mr K.W. Whyte, 543 High Street Rd.	232 7188

ALL ADDRESSES ON MLLWAY DIRECTORY MAP 61

# STOCKTAKING SALE

**BELOW WHOLESALE PRICE  
SAVE DOLLARS ON GENUINE**

**“ PEBBLE-MIX ”**

**33 kg. drum WAS \$43.20**

**NOW \$28.50**

**SAVE \$14.70**

WE GUARANTEE YOU WILL NOT BUY CHEAPER IN M-LUORNE  
**FREE DELIVERY IN METRO AREA OF ALL ORDERS OVER \$200**

WE WILL BE HAPPY TO QUOTE YOU A PRICE FOR THE LAYING OF "PEBBLE-MIX" BY OUR PROFESSIONAL APPLICATORS.

*THE ORIGINAL THE BIGGEST AND THE BEST*



**The  
PEBBLE-MIX  
Company PTY LTD**

74 Highbury Road, Burwood, Vic. 3125 Telephone 288 8222

# CHURCHES

## ANGLICAN CHURCHES

**St Faith's** - 8 Charles Street, Burwood.  
Vicar: Rev. Donald Hardy 29 2761

**St Michael & All Angels** - 44 Station Street, Bennettswood.  
Vicar: Rev. Keith Browne 288 1029

## CATHOLIC CHURCHES

**St Benedict's** - 229 Warrigal Road, Burwood.  
Parish Priest: Rev. Fr Barnett 285 2492

**St Scholastica's** - 346 Burwood Highway, Bennettswood.  
Parish Priest: Rev. Fr Maltby 288 1006

## CHURCHES OF CHRIST

**Hortwell** - Ont Milverton & Highfield Roads, Burwood.  
Ministers: Mr Bruce Clapp 29 4986

**Wattle Park** - Orana Chapel, Orana Homes for Children, Elgar Road, Burwood.  
Ministers: Mr Ian Allsop 654 4906 (B.H.);  
548 5162 (A.H.).

## UNITING CHURCHES

**Burwood** -  
(East Church) - Warrigal Road, near Church Street  
(West Church) - Ont Warrigal Road & Hyslop Street  
Ministers: Rev. Robert Catford 288 2535  
Deaconess Valmai Schmidtke 288 2284  
Caretaker & Sec. 288 2284

**Bennettswood** - Burwood Heights

-Tonnysan Street, Bennettswood;  
-Ont Burwood Highway, Blackburn Road, East Burwood.

Ministers: Rev. David Peel 288 5396  
Rev. Lloyd Shirley 272 4692

**St James, Wattle Park** - Ont Riversdale Road & Lyndock Street, Box Hill South.  
Ministers: Rev. Dr. Gordon Watson 288 1814

## KOREAN CHURCH

**Uniting (North) Church**, Joffre Street, Burwood.  
Ministers: Rev. Jaro Hyun Kim 288 1029

(WORSHIP ITEMS AVAILABLE FROM CLERGY LISTED)



## OTHER CHURCHES IN THIS AREA:

### BAPTIST

**Ashburton** - Y Street.

Ministers: Rev. John Holt 25 4022

**Camberwell East** - Ont Highfield & Hunter Roads, Camberwell.

Ministers: 836 8773

### CHRISTIAN BROTHER ASSOCIATES

**Ashwood Gospel Chapel** - Jordan Street & Vilsen Court, Ashwood

Contact: Mr R. Godford 977 1810

**Wattle Park Chapel** - 234 Elgar Road, Box Hill South.

Ministers: 288 2725

### GREEK ORTHODOX

**Box Hill & District Parish** - 1 Hopman Parade, Box Hill.

Parish Priest - Rev. Fr N. Papaioannou,  
89 1674, 89 2087

### JEWISH SYNAGOGUES

**Burwood Hebrew Congregation** - Mt Scopus Synagogue, 265 Burwood Highway.

Rabbi: Dr A. Westley 272 8252

### CONDARE COURT EXTENSIONS OPENED

The Moderator of the Uniting Church, Rev. C. Lawrence Turner was in Burwood on Saturday, 20th February to perform the Official Opening of extensions to Condare Court in Joffre Street.

These extensions to the existing range of Condare Court accommodation for senior citizens comprise single bedrooms with shared facilities and services supplied, and one self contained flat.

The construction was funded by the Commonwealth Government to meet the needs of pensioners who are seventy and over and capable of independent living.

### NOTES ON SPECIAL EASTER SERVICES

From St. Scholastica's, Bennettswood, there will be a "Stations of the Cross" procession along Burwood Highway on Good Friday, 9th April.

A sunrise service will be conducted in Wattle Park on Easter Sunday, 11th April, by St. James Uniting Church, Wattle Park, to which members of other churches are invited.

## PIANO CLASSES

- \* Small Group & Individual Lessons in Piano, Musicianship & Theory
- \* Adult Beginners most welcome
- \* Classical and Modern Tuition - Including preparation for A.M.E.B. Examinations.
- \* INDIVIDUAL PIANOS FOR EACH STUDENT

Geraldine Moloney  
PHONE 299 2228

## hand Spinning



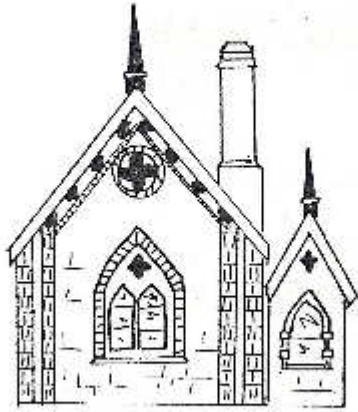
Six 2-hour lessons

\$30

Jean Stone

288-2015

# HISTORY PAGE



## Burwood Primary School No. 461.

### YESTERDAY AND TODAY AT BURWOOD PRIMARY

"A contribution to Australia's heritage and its preservation is encouraged" states the National Trust classification for the Burwood Primary School on Burwood Highway.

And most would agree that the Burwood school is not only a landmark in the area but a reminder of the days when Burwood was called by the romantic name of Ballyshanassy.

Despite a gradual decline in the class rolls, the Principal, Mr A. Thompson, is encouraging more enrolments for the present school year. And the school certainly has a lot to offer in contrast to the turn of the century inventory which included 90 slates, 78 ink wells, one ladder and one bucket.

The school now boasts a vegetable garden, sporting facilities, a well-equipped library containing 6000 books, art and craft room, a dark room for those choosing the photography course available and an adventure playground.

### CHOICE OF SUBJECTS

All these facilities support a range of "elective" subjects, unusual in a primary school, that includes drama, embroidery, folk dancing, stamp collecting and media studies.

The beginning of this school year saw a population of 115 pupils with 12 or more preps, starting a school career. Mr Thompson says there are four composite grades operating with six teachers. He has found that, because the school does not get the same maintenance as larger schools, there is more parent involvement and assistance.

Mr Thompson has taken on the project of collating the history of the school and says the inspectors' reports from the opening of the school in 1865 are all intact as well as the report on the first pupil enrolled at the school.

What is now the office building was, until remodelled, a classroom. This building also includes a former classroom with a unique tier platform, used for the school inspector for the Box Hill area.

## WADABOUT BEAUTY

1369 Tourak Road, BURWOOD  
Phone: 29 1813

Competent staff willing to discuss any hair problems you may have. Qualified colourist. Beautician service.



ACCENT  
FLOWERS

299 2305  
A.H. 233 1655

Specialising in -

BRIDAL WORK WREATHS  
FLORAL ARRANGEMENTS  
Large variety of plants  
SHOP 6, BURWOOD ARCADE, 1405 TIOORAK ROAD



## Burwood Hospital

### FROM STately HOME TO MODERN HOSPITAL

Servicing the community of Burwood has been the motive behind the changes that have taken place in the Burwood and District Community Hospital since it was first converted from a stately home to a private hospital in 1920.

The hospital is soon to undergo another change in its services when alterations convert it into a Peritoneal Dialysis Home Training Unit which will be affiliated with the Renal Unit of Prince Henry's Hospital.

The hospital, situated in Warrigal Road, was built in 1878 by Mr Tom Scott and he named his homestead Dunstaffnage. In 1920, Sister Forsythe purchased the house to convert it into a private hospital. On 18th July, 1950, a meeting of citizens was held and it was stated in the minutes that the present matron was unable to carry on the hospital and had placed it on the market.

"As a result of advice received, it was expected that the Government of the day would acquire the property to enable it to continue as a hospital, provided a committee of bona fide citizens care for the management of the institution", the meeting minutes state.

### A CHANGE OF NAME

The hospital was then known as the Dunstaffnage Private Hospital and a Dunstaffnage Benevolent Society was formed to manage it. The Government purchased the land and equipment at the price of £6000 and advised that "trustees enter a deed of trust and attend to the transfer of the property".

The committee decided to lease the hospital to an experienced nursing sister, but after four years she was unable to continue.

On 4th September 1954, the Hospitals and Charities Commission authorised the hospital to be known as the Burwood and District Community Hospital and the committee of management planned a maternity hospital to cater for the greatest demand in the area - a baby boom!

### 10,879 NEW BABIES

Facilities were provided to accommodate more patients and extensive renovations were carried out to cater for midwifery and surgery.

10,879 babies were born there, the highest number for one year being 683 in the year ending 30th June, 1971.

Ten years later, early in 1981, the Health Commission was concerned at the low occupancy in the maternity section and suggested that part of the hospital be used to run the Peritoneal Dialysis Home Training Unit.

According to the hospital manager, Mr W.J. Ellis, and Miss P. Kirwan, director of nursing, the hospital still retains sufficient beds for medical and surgical cases and the operating theatre and equipment have been updated in the last twelve months.

Mr Ellis and Miss Kirwan agree that the hospital fulfils an important function in the Burwood area and will continue to do so in the future as it has done for the past sixty years.

- Interviews on Burwood History by Liz Brett

Kevin Bartlett says:



**BURWOOD  
MITSUBISHI**


AUTHORISED DEALER

"GREAT PEOPLE TO DO BUSINESS WITH"



GREAT DEALS ON

- \* S I G M A
- \* SCORPIO
- \* COLT
- \* EXPRESS COMMERCIALS
- \* AND FIRST-CLASS USED CARS



*Stuart Slater*  
Sales Manager

**BURWOOD  
MITSUBISHI**

45 Burwood Highway, Burwood, Victoria, 3125  
Telephone 288 9111      FAX 233 3515

PRESENT THIS ADVERTISEMENT AND RECEIVE OUR FREE PROTECTION PACKAGE  
ON ANY NEW MITSUBISHI VEHICLE PURCHASE.  
A SUPPORTER OF LOCAL COMMUNITY ACTIVITIES

ACTIVE BRANCHES OF  
VICTORIAN CAUSES

EARLY PLANNING FOR  
RETIREMENT ASSOCIATION



AMNESTY INTERNATIONAL

NOBEL PEACE PRIZE 1977

This London-based human rights movement works in conjunction with thousands of members in most countries to free men and women who are "prisoners of conscience", detained for their colour, ethnic origin or beliefs provided they have not used or advocated violence.

The Victorian Section of Amnesty International was one of the first initiated overseas and now has twenty groups whose members meet together regularly, including Box Hill-Burwood and Camberwell groups.

Each group "adopts" three prisoners of conscience from different countries, about whom information is sent from the London headquarters. Campaigns for their release are carried out by such means as petitions and letter writing to leaders and officials in the countries concerned. The groups also contact the prisoners and their families, if possible, to assure them that they are not forgotten.

In addition, the Box Hill - Burwood group is currently co-ordinating, for the whole of Australia, a special action on Pakistan to highlight the serious human rights situation in that country.

Amnesty membership is a link in a world-wide human rights cause. For further information, contact:

BOX HILL - BURWOOD GROUP 14:  
Mrs S. Lassel 248 3777

CAMBERWELL GROUP 16: Mr J. Gibson 26 8707

The COMBINED PENSIONERS' ASSOCIATION OF VICTORIA is concerned with all types of pensioners and membership is open to all categories.

The Camberwell Branch meets in the Hartwell Uniting Church Hall, cnr Eddy Street and Halley Avenue, near tramstop 56 Camberwell Road, Hartwell at 1:30 p.m. on 1st Thursday in month.

Matters of interest and social functions are arranged, with 30 cents admission, including afternoon tea and lucky door prize.

For further details, telephone 25 2966.

C.W.A. COMBINES TOWN AND COUNTRY INTERESTS

The Country Women's Association of Victoria (C.W.A.) branches in this area include:

BURWOOD BRANCH meets 1 p.m. on 2nd Tuesday in month at St Faith's Hall, Charles Street. Craft Days 10 a.m. on 3rd Tuesday in month - Card Days from 12 noon on last Thursday in month, with basket lunch and afternoon tea, both in Griffith Room, St Faith's Hall. Visitors always welcome. Secretary: Mrs N. Oaten, 25 1875.

MOUNT WAVERLEY BRANCH meets 1 p.m. on 1st Wednesday in month at Uniting Church, Virginia Street. Meetings include speakers, demonstrations, craft classes. The Branch Choir entertains senior citizens and church groups. Secretary: Mrs Claire Dunstan, 277 1959.

On 17th March: Mount Waverley Branch Craft Day is open to the public from 9:30 a.m., Uniting Church Hall, Virginia Street, Mount Waverley.

For people facing the end of their working lives, the transition to retirement need not be a lonely and daunting one, with the support of the Early Planning for Retirement Association and its local groups.

Camberwell, for example, has a very active EPR group which has been in operation for ten years. It caters for the interests not only of those with retirement ahead but also for a large number of those joining earlier who have now retired.

Its learning and recreational resources, each arranged by a different convener, include antiques, badminton, canasta, community service, cribbage, floral art, golf, music appreciation, painting in oils and water colours, philately, photography, scrabble, sewing, day and evening solo, table tennis, walking and wine appreciation groups.

Dine-outs and file luncheons, group travel interstate and overseas are also arranged. Enquiries are welcome to Mr and Mrs M. Forbes (Joint Secretaries), P.O. Box 330, Camberwell, 3124. Telephone 29 2137.

The Box Hill EPR group, now in its sixth year, holds monthly meetings at the Whitehorse Room, Box Hill Town Hall (next meeting, 9 p.m. Wednesday, 7th April). Speakers on many topics of practical interest for those at this stage of their lives.

For further enquiries, contact the Secretary, P.O. Box 108, Box Hill, 3128.

Waverley EPR group holds quarterly meetings at 8 p.m. on 3rd Wednesday in February, May, August and November at St. Christopher's Church Hall, Doon Avenue, Sydnal.

Activities groups include book discussion, Bible study, daytime activities, dine-outs, golf, music lovers, solo, travel and walking.

Progressive dinners are held several times each year.

Contact the Secretary: Mrs M.C. Weir, 232 2676.

The easy way to send your NEWS! ✂

APPLICATION FORM FOR NEWS/INFORMATION IN NEXT ISSUE. PLEASE FILL IN AND RETURN BY 28TH MAY AT LATEST TO EDITOR, BURWOOD BULLETIN, 78 MADELINE STREET, BURWOOD, 3125.

NAME OF CLUB OR GROUP:.....

TIME, DATE, PLACE OF MEETING:.....

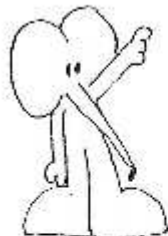
NAME & TELEPHONE NUMBER OF CONTACT PERSON TO BE PUBLISHED:.....

ADDRESS OF CONTACT PERSON TO RECEIVE COPY OF NEXT ISSUE WHEN PUBLISHED:.....

BRIEF NOTES ABOUT SPECIAL PROJECTS/COMING EVENTS FOR PUBLICATION:.....

SIGNED:.....

(OFFICE USE ONLY - IN CLUB OR GROUP)



**RHEUMATISM & ARTHRITIS  
ASSOCIATION OF VICTORIA**

The State's number one group of crippling diseases, arthritic and rheumatic diseases, are the concern of this voluntary association which has been working since 1968

to expand community support for patients and their families

to encourage improved treatment techniques and to give financial assistance to research and education.

Local self-help groups strengthen contact with the community and have been established in many districts. Sufferers may turn to them for information, assurance, companionship and assistance. These local groups include:

**BOX HILL** : Meets 10:30 a.m. 4th Wednesday in month at Box Hill Community Centre, 17 Bank Street. Contact: Mrs Ruth Leuen, 89 7635.

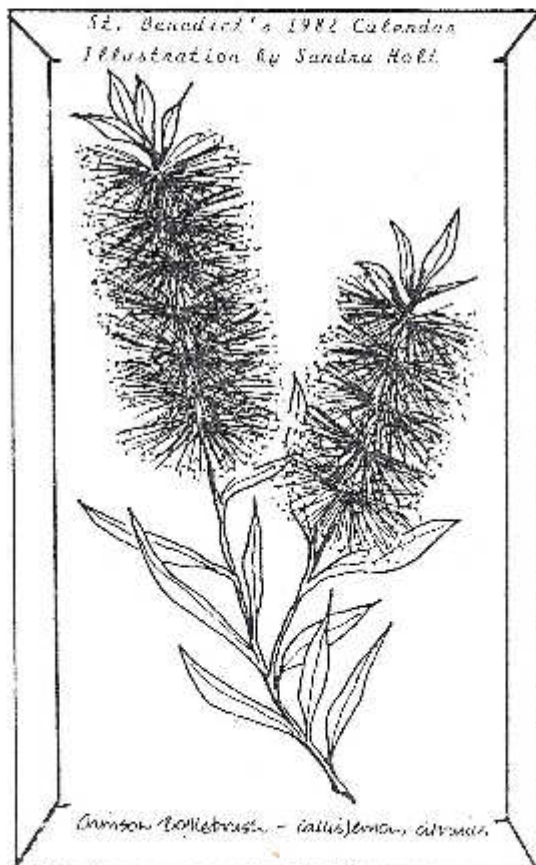
**BOX HILL LVLNING** : Meets 8 p.m. 4th Thursday in month at Box Hill Library, 1040 Whitehorse Road. Contact: Mr H. Rao, 850 3736.

**HAWTHORN/CAMBERWELL** : Meets 10:30 a.m. 3rd Tuesday in month at Camberwell Community Centre, 563 Riversdale Road. Contact: Mrs Deidre Moore, 82 7756.

**WAVERLEY** : Meets 10:30 a.m. 1st Tuesday in month at Alvie Hall, cor. Alvie & High Street Roads, Mount Waverley. Contact: Mrs Ina Roberts 232 2416.

**WATER EXERCISE GROUPS**  
Contact Mrs Margaret Matthews, 89 5548 for information about a new Water Exercise Group at the Box Hill Swimming & Recreation Centre Surrey Park, Alexander Street, Box Hill.

A self-help group from the Rheumatism and Arthritis Association of Victoria is held from 1:30 - 3:30 a.m. on Mondays at the Multiple Sclerosis Pool, 616 Riversdale Road, Camberwell. Contact: Mrs Nancy Garry, 29 7769.



*St. Benedict's 1981 Calendar  
Illustration by Sandra Holt*

*Gannson Bottlebrush - Callistemon citrinus*

**Wallpapers**  
comdec **WILSON**  
FABRICS & WALLPAPERS

CURRENT PATTERNS FROM \$19.90  
reduced to

**\$4.95-9.95** PER ROLL

**Arcade Wallpapers**  
Shop 5, 1405 Toorak Rd.,  
Burwood.  
Phone 299 2026

**NURSING SISTERS' ASSOCIATION OF AUSTRALIA**

LOCAL GROUP CONTACTS

BURWOOD:	Kathie Boulton,	836 1667
GLEN IRIS:	Pat Collins,	79 7600
MOUNT WAVERLEY:	Susan Brown,	544 8027

**REGIONAL JAYCEE CHAPTERS**

The aims of JAYCEES are to offer members opportunities for personal development, social outlets and participation in community service projects. Active local chapters include:

**BURVALE CHAPTER:** Meetings 8 p.m. 2nd Tuesday in month at Korinya Lodge Reception, 29 Railway Road, Blackburn. Contact: Pam Bingley, P.O. Box 38, Blackburn South, 3130.

**WAVERLEY CHAPTER:** Meetings, 7:30 p.m. every 3rd Wednesday in the Colony Room, Village Green Hotel, Glen Waverley. Contact: Louis Marsh, P.O. Box 4, Mount Waverley, 3149. Telephone 233 2502.

**SERVICE CLUBS POST BOX CONTACTS**

CAMBERWELL APEX CLUB:	P.O. Box 171, CAMBERWELL 3124
MOUNT WAVERLEY APEX CLUB:	P.O. Box 333, MOUNT WAVERLEY 3149
RE WETTERWOOD LIONS CLUB:	P.O. Box 325, BOX HILL 3128
WAVERLEY LIONS CLUB:	P.O. Box 13, GLEN WAVERLEY 3150
ASHBURTON ROTARY CLUB:	P.O. Box 175, GLEN IRIS 3145
WAVERLEY ROTARY CLUB:	P.O. Box 204, MOUNT WAVERLEY 3149
CAMBERWELL ROTARY CLUB:	P.O. Box 80, BALWYN 3103

**W. Gentle & Son Pty. Ltd.**

JEWELLER & WATCHMAKER, M.H.G.A.

- \* SPECIALISTS IN DESIGNING AND REMODELLING
- \* DIAMOND AND WATCH WORK
- \* COMPLETE SERVICE

1421 TOORAK ROAD, BURWOOD 3125  
Telephone: 299 1406

**Burwood Pet Shop**  
 Specialise in BIRDS and fish  
 WE STOCK THE LOT! 299 1212  
 BURWOOD ARCADE, 1407 TOORAK ROAD  
 \*\*\* OPEN SEVEN DAYS A WEEK \*\*\*

**FRAMED & HUNG**  
 250 WARRIGAL ROAD, BURWOOD. 288 9627  
 OILS, WATER-COLOURS, PRINTS, TAPESTRIES,  
 PHOTOGRAPHS, ETC. ALL EXPERTLY FRAMED.  
 ALSO ... ART SUPPLIES, PRINTS & ORIGINAL PAINTINGS.

• LOCAL INTERESTS AND NEEDS •

ADULT EX-SERVICE WOMEN'S ASSOCIATION offers social and recreational activities for ex-servicewomen, husbands and friends. Meetings, 7:30 p.m. 1st Thursday in month, Australian Legion House, 166 Albert Road, South Melbourne. For further information contact Debby Kay 288 3019 or Madge Cole 720 3535.

BUSY FINGERS & CHATTER GROUP, last Tuesday in month at Burwood Uniting Church East Hall - open to any Burwood resident who enjoys making things for others such as clothes for refugees, feeders for hospitals or goods for fetes. Lone women can meet at 12 noon for RYO lunch (cuppa provided). Contact Mrs D. Long 288 1892.

W.A.C.S. - Women's Action Group, St Benedict's Church, Burwood. Meetings at 10:15 a.m. on 2nd Tuesday in month in homes of members. The group offers friendship, interesting speakers, outings and fund-raising functions. Membership is open to all who wish to join. Enquiries: Joy Hosking, 29 4672.

**BENEDICARE - A PRACTICAL SUPPORT GROUP**

The function of this group of caring men and women is to give practical help to those who need it, such as emergency transport, child or patient minding or tasks for old folk. Co-ordinators in the various parts of St Benedict's Parish are:

Mrs Beverley Gibson, 285 8514; Mrs Margot Macey, 29 2548 and Mrs Betty McPhee, 288 5168. The convener is Mrs Jess Tighe, 288 8428.

EAST BURWOOD YOUNG WIVES meets 2nd and 4th Wednesday of each month in the Church of the Ascension, Blackburn Rd, East Burwood, at 9.45 a.m. Morning Coffee and Baby-sitters provided. Enquiries to Sue Warrington 874 8006 re membership.

**CHEMIST**  
**OPEN TONIGHT**  
**UNTIL 10 P.M.**

OPEN 7 DAYS 9 A.M. - 10 P.M.

**PETER SMITH**  
 26 BURWOOD HIGHWAY,  
 EAST BURWOOD  
 252 9392

THEY MEET AT R.S.L. HALL  
 1376 TOORAK ROAD, BURWOOD

R.S.L. MEMBERS, including new members, can play billiards, snooker or yarn with their mates at the Hall on Thursday afternoons, Friday nights. Contact Mr C. Poulton 288 3372.

R.S.L. WOMEN'S AUXILIARY meets on 2nd Tuesday in month. Contact Mrs R. Adams, 285 1586.

WAR WIDOWS & WIDOWED MOTHERS'S ASSOCIATION, Burwood Branch meetings are held at 1.30 p.m. on 4th Wednesday in month and a warm welcome is extended to newcomers in the area. Solo and Crazy Whist, with prizes and afternoon tea, same time and place on 2nd Wednesday in month. Contact Secretary, 288 4473.

BURWOOD R.S.L. MARCHING GIRLS! This group of 7-12 year olds (The Midgets) train at the Hall from 7 - 8 p.m. Tuesdays and also Saturday mornings prior to competitions. There's a place for new members who can benefit from the department training and companionship. Contact President: Mr D. Fielding, 29 5034.

**CARE FRESH DRY CLEANERS**  
 ON SITE TELEPHONE 29 4129  
 1408 TOORAK ROAD, BURWOOD

**SENIOR CITIZENS**  
 BURWOOD COMMUNITY CENTRE

This is the only senior citizens' group in Burwood which meets weekly and it caters for those who live alone, may be newly-arrived in the district and away from friends and family, or for those who enjoy making new friends and contacts.

Meetings are held at the Burwood Uniting Church Fellowship Room, Warrigal Road (near Church Street), each Wednesday afternoon from 1:30 - 3:30 p.m.

A different entertainment is offered each week, varying from speakers, musical programmes, travel slides or art and craft demonstrations, followed by tea or coffee served by friendly hostesses.

The Centre is for the community, not a church group, and Burwood residents need no further invitation to "drop in" and be welcomed.

Transport is available for the disabled or those who are without ready means of access, by arrangement with Mrs Thorpe, 288 2200. Convener: Mrs Wilma McCrae, 288 2063.

*NEW MEMBERS WELCOME AT  
 CHURCH GROUPS FOR SENIOR CITIZENS*

"60 AND OVER" CLUB: 1:30 p.m. 1st Monday in month at Burwood Uniting Church Hall, East Side, Warrigal Road (near Church Street). Contact: Frank Kline 299 2525.

40-99ERS: Burwood Heights Uniting Church. Contact: Mr L. Watson 233 5868.

FRIENDLY CIRCLE, 50 and over: Cards, handwork and companionship, 2nd Tuesday afternoon in month, B.Y.B.C. (rear St Benedict's School), Central Avenue, Burwood. Contact: Mrs Keogh 288 7759.

ST SCHOLASTICA'S Senior Citizen's Group: 12 noon 2nd Tuesday in month at Bally Shannassy Reserve, Highbury Road including lunch, bingo, occasional outings and parties. Contact: Mrs Coral Bell 233 1078.

ELDERLY PEOPLE CRAFT GROUP: Tuesday Group at St James Uniting Church Hall, Riversdale Road, Wattle Park. Contact: Mrs Atkinson 285 1885.

## Be in it! Fun Run on 18<sup>th</sup> April

The Rotary Club of Ashburton will organise a 2KM Fun Run from 10 a.m., Sunday 18th April, to start and finish at Glen Iris Park.

Glen Iris Park is adjacent to the railway line in High Street, opposite Glen Iris station and the run will be through parklands and golf course.

The run is open to all and those who wish to join the fun can register on the day. Registration: \$2.00 adults, \$1.00 juniors. Enquiries to Mr Noel Jones, 25 5831.

PROCEEDS FOR A ROTARY COMMUNITY SERVICE

## News of Youth Groups

### ASHBURTON

Boys' Brigade Youth Group and Girls' Brigade for cadets and seniors combine fun and games with learning about community awareness. Ashburton Baptist Centre. Contact Annette Burrows 25 8542.

### ASHWOOD

Youth Club meets 7:30 p.m. Fridays at Ashwood Gospel Chapel Hall, Jordan Street. Contact Mr R. Bedford 277 1010.

### BOX HILL

Rotaract Club is looking for young people interested in working for the community. Supper meetings (8:30 p.m.) and dinner meetings (7:30 p.m.) at C.F. Walker Hall, Kingswood College, Station Street. Contact Shelley 289 2922 or Chris 89 4574.

Tinderbox Coffee Shop, Station Street, Box Hill (opposite Whitehorse Plaza), from 8:30-11 p.m. Fridays.

### BURWOOD

The Burwood Venturers (part of the Scouting/Guiding movement) welcome young people 14-17 at Scout Hall, Queen's Parade on Friday nights. Contact David 89 9109 or Joy 232 7414 for details.

### CAMBERWELL

#### EVERY FRIDAY NIGHT AT "THE CHANGING ROOM"

A coffee lounge for young people was started last year in the old pavilion at the Camberwell Sports Ground (off Trumper Street).

Called "The Changing Room", it continues to offer coffee, song and Christian concern for Camberwell teenagers on Friday evenings.

A team of volunteers staff "The Changing Room", led by Adele Madder who has had wide experience working and singing in coffee lounges.

### PALA PTY. LTD.

HIGH QUALITY WIRING HARNESS,  
WIRE CUTTING & STRIPPING,  
TERMINAL ATTACHING

5 MILLICENT ST.  
BURWOOD, 3126

TELEPHONE: 288 2182



**Hazelwood  
& Hill Ltd**  
Living with timber since 1931

TIMBER MERCHANTS & VOLUME DRESS SPECIALISTS

9 Duffy Street,  
Burwood, Victoria, 3125 Telephone: 283 5522

### EXCHANGE STUDENT IN MOUNT WAVERLEY

18-year old Holly Beder from Superior, Wisconsin, U.S.A. is spending this school year with William and Marlene Gorman of Seaview Street, Mount Waverley and will attend Kilmalra College. Welcome, Holly!

Holly is an international exchange student who will have the experience of living and going to school in Australia under the YOUTH FOR UNDERSTANDING programme. This organisation also gives Australian students the opportunity to live with families in Japan, Sweden and U.S.A.

Inquiries about YOUTH FOR UNDERSTANDING may be directed to the Victorian office, 257 1141.



### WATTLE PARK

At Wattle Park Gospel Chapel, 234 Liger Road, young people meet together for supper after Sunday evening services and hold other youth meetings at the Chapel twice a month.

12-15 YEAR OLD GROUP meets 2nd Friday and 4th Saturday in month. Contact: Finsey & Kaylene Stone, 836 3404.

16 PLUS GROUP meets 1st and 3rd Saturday in month. Contact: Mark Smith, 870 8370.

### WAVERLEY

A community service club with social activities for young men and women 18-28, Waverley Rotaract meetings are held at Alvie Hall, Alvie Road, Mount Waverley, 7:45 p.m. 2nd & 4th Mondays in month. Activities include car washes, cake stalls, Christmas hampers, gardening, day and weekend tours away, youth camps, car rallies, dinner dances and bush dances. Contact: Ian Luhnig, P.O. Box 308, Mount Waverley, 3149; 277 2802 (A.H.)



## Be Active!

### FOOTBALL RECRUITS NEEDED AT ESSEX HEIGHTS

Essex Heights Football Clubs, Inc. Outlook & Huntingdale Roads, have places for players from boys under 9 to 1st-18 stage. Juniors (to 12) may contact Peter Royals, 277 7006; Under 13-Senior, Keith Vincent, 277 6667.

### CAMBERWELL TENNIS CLUB NEWS

Nine teams were entered in the Summer Competition of Eastern Suburbs and Churches Table Tennis Association commencing 1st February.

New players are invited to join the Club and those wishing to play in the fourteen-weeks winter competition from 26th April, are asked to apply no later than 8th March (teams selection date). St Benedict's Youth Centre, Central Avenue, Burwood is the Club headquarters. Applications and enquiries to David Street, 285 7149 (A.H.)

### BURWOOD UNITING CHURCH CALLISTHENICS CLUB

One-hour classes for girls of all ages from 5:30-9:30 p.m. Tuesdays (beginning with Babies at 5:30 p.m.) at Uniting Church East Hall, Warrigal Road, near Church Street. Classes for married ladies, 10-11 a.m. Thursdays, in East Hall.

The dictionary defines callisthenics as "exercises to develop strength and grace" and singing, dancing, acting and stagecraft are involved. Contact: Mrs M. Logan 288 5310.

