

ISSUE 170

SUMMER 2023

FREE



the Bulletin

For over 40 years the Community Magazine for
Burwood and surrounding areas

Whitehorse Art Show success

Whose rays illumine the
Residents in the populous and progressive
Districts of
Box Hill, Surrey Hills, Camberwell, Mitcham, Ringwood,
Doncaster, Dacorum, Verulam, Molesey, Selsdon, Sanderstead,
Barnes, Putney, Chelsea, Kensington, Hammersmith, and
Reading, and the surrounding districts.

It gives details of the most interesting and important
events, and the names of the persons and societies
concerned.

It is a real, live, and useful medium for the expression of
opinion, and the exchange of views on matters of local
interest.

Its columns are open to all, and its pages are
filled with the most interesting and useful
information.

It is a real, live, and useful medium for the expression of
opinion, and the exchange of views on matters of local
interest.

Its columns are open to all, and its pages are
filled with the most interesting and useful
information.

An immense advance has been made in the
Comfort, Efficiency and Economy of gas lighting,
by the introduction of the **Welsbach Incandescent
Gas Burner.**

This invention has wrought a revolution in the Gas Lighting business.
It is the only gas burner which gives a light equal to 15 candle-power for 24 hours.
One pennyworth of gas consumed in the old way by an ordinary jet
gives light equal to 15 candle-power for 24 hours.

One pennyworth of gas consumed by an **Incandescent Burner** gives
a light equal to 50 candles for 24 hours.

J. HORNE MAN,
Family Butcher,
Putland Road, close to Station,
BOX HILL.

Families waited on daily for orders
Small Goods always on hand.

FOR GOOD TAILORING, GO TO
T. B. BEACH

122 & 124 SWAN STREET, RICHMOND

MANGNALL

MANGNALL

This space available for advertising.
See page 6 for details.



With the experienced and knowledgeable team at East Burwood Travel & Cruise, you'll receive reliable, friendly service and personal attention.

Nominated for the 2019 NTIA Awards
'BEST TRAVEL AGENCY'
Retail – Single Location in Australia'



AUSTRALIAN HOLIDAY SPECIALISTS

All the team of Travel Professionals at East Burwood Travel & Cruise are familiar and knowledgeable with the great holidays that can be taken at home in Australia or Internationally.

So whether you are contemplating a capital city getaway, a trip to the Red Centre or any of the Queensland holiday destinations we are the team to book with.

We are European/US & Canadian specialists and can assist with international flights, river cruises, tours etc., or reconnecting with friends and family in these current times.

Book with us ... your Independent Local Travel Agent who has been in Business for 35 plus years.



BOOK WITH US TODAY:



Phone: (03) 9808 1177

Cnr Burwood Highway & Middleborough Road

(Opposite RSPCA) East Burwood VIC 3151

Fax: (03) 9888 8397

Email: info@eastburwoodtravel.com.au

Web: www.eastburwoodtravel.com.au



TRAVEL IN COMFORT & STYLE

Treat yourself... to a luxury Mercedes Benz chauffeured car

Start your journey in COMFORT... and STYLE... with a luxury chauffeur driven transfer to the airport, or to that special occasion.

You will be picked up in a Mercedes Benz E Class – the latest and safest car from Mercedes.

Let your chauffeur worry about the traffic and your luggage... you relax and get ready for your holiday, business trip or special occasion! All this for just slightly more than the cost of a taxi.

Book early, as there is only one Mercedes available.

For bookings or enquiries, contact us today:

Telephone: 0488 022 900

or email info@arriveincomfort.com.au



Arrive in Comfort

www.arriveincomfort.com.au

BULLETIN PEOPLE

The Bulletin is produced by volunteers who provide a range of talents freely for the benefit of the community.

Acting President Cheryl Webster
Acting Editor Chris Gray
editor@burwoodbulletin.org

Magazine Design & Layout Chris Gray
designer@burwoodbulletin.org 0413 412 844

Secretary Alan MacGavin
info@burwoodbulletin.org 0408 325 325

Treasurer Lucy D'Amico
treasurer@burwoodbulletin.org 0404 915 422

Paid Advertising
advertise@burwoodbulletin.org 0413 412 844

Community Notices
freenotices@burwoodbulletin.org

Distribution info@burwoodbulletin.org

Story Ideas editor@burwoodbulletin.org

Proofreading Barrie Harding

Volunteering volunteer@burwoodbulletin.org

Website Frank Zhang
webmanager@burwoodbulletin.org



ISSN – 2203-2894

Contributors Issue 170

Chris Gray Clare Headland
Chris McKillop, Jeff Patchell & Bob Kearsley
David Ion Thomas Jenny Roe
Joel Andrews Kelly Lai & Olivia Dufty
Lorraine James Pamela Mills
Peter Smith Ray McLeod-Dryden
Rebekah Mitchell-Matthews
Rosalie Whalen Yoshanthi Wellawa

Associates

Bob Stensholt Bronwyn Woolcock
Bruce Gibbs Charles Hui
Cheryl Webster David Francis
Leah Zartz Margaret Knight
Margaret Rockow Merrill Bolton
Peter Chang Peter Wynd
Rowan Woolcock Susan Cover

Printing: M PRINT COLOUR PRINTERS

The Burwood Bulletin wishes to advise that the views or remarks expressed in this publication are not necessarily the views of the Burwood Bulletin editorial or production staff and no endorsement or service is implied by the listing of advertisers, sponsors or contributors. Although every effort is made in reproducing and printing advertisements correctly, we can take no responsibility for errors.

COVER: Whitehorse Art Show 2023 Winner

Page 11



FROM THE EDITOR

The Whitehorse Art Show is with us once again, thanks to the hard work of Rotary Box Hill Burwood, and in this issue we meet – as well as this year's winner, David Chen – some who may, perhaps, win in the future?

Another celebration (at *BB*) is that of our longest-standing volunteer, Margaret Orange – we hope you'll find the breadth of her interests as inspiring as we do!

We have continued to supply historical articles in this issue, which we believe to be as engaging as those that have gone before. And, of course, if you have any ideas for stories – old or current – for future issues, we'd love to hear from you.

It only remains for us at *BB* to wish all readers a happy and safe Christmas and New Year!

INSIDE

Whitehorse Art Show for Youth	5
Birth of a Sensory Garden	6
Volunteer Spotlight: Margaret Orange	13
Recalling the film <i>The Wheel</i>	16
Street Party success	19
Archy and Sandy the Warhorse	26
Whatever Happened to Ion Grove?	31
Suburbs of Melbourne: Hawthorn	34

and more!

LOCAL CLASSIFIEDS	36–37
COMMUNITY NOTICES	45–53
WHAT'S ON LOCALLY	54–55

SUBSCRIPTIONS

A Bulletin subscription is \$32 a year.
Phone 0408 325 325

**Paid Ad deadline for next issue
1 February 2024**
(see page 6 for Advertising rates)



COMMUNITY NEWSPAPER ASSOCIATION OF VICTORIA
the voice of the community

MEMBER 2023

Burwood Bulletin Inc.
ABN 90 904 070 125
PO Box 1120 Hartwell 3124
www.burwoodbulletin.org



www.proslab.com.au
Level 1/313 Canterbury Road
Canterbury, 3126



TRADE IN YOUR OLD DENTURES FOR A MORE MODERN LOOK

Proslab Dental has revolutionised dentures. We use the latest digital technology to give you the best fit.

Upgrade to digital dentures and create the perfect smile!

Digital Dentures



EASY PAINLESS RELIABLE

**SCHEDULE YOUR FREE
CONSULTATION TODAY
ON (03) 8809 0500**

**10% DISCOUNT
WITH SENIOR CARD**

"I've had seven sets of traditional dentures and spent thousands of dollars on refitting. Now I smile with confidence! The fitting of my new dentures was so easy and quick. I was also very impressed with the new scanning technology. I haven't looked back."

- Joan, Camberwell

For the awakening artists

FOR 57 years, The Rotary Club of Box Hill (now Rotary Box Hill Burwood) has been running an Art Show in Box Hill. An important part of this Show is the Student Art Prize, which attracts Year 11 and 12 Fine Art Students from a number of schools in or near Box Hill.

In 1987, The Box Hill Rotary Club established a Trust, (the Stoll Trust) to commemorate the life and work of the late Emile Stoll who lived in Vermont and was noted for his work as an artist until his death in 1942.

The Trust provided Annual Awards to be presented to young artists by way of recognition and as an encouragement for the development of their talent. The "Stoll Trust Award" offered an opportunity for high school students to compete for a cash prize to assist in furthering their interest in fine art.

The Student Art was judged by the Art Show judge who was accredited through AGRA (Australian Guild of Realist Artists) and the judge's decision was final.

Part of the prize for student artists participating in the Stoll Trust Award at College level, was for their art work to be judged at the College level, with the winning two artists from each College being asked to exhibit at the Rotary Art Show.

Past winners of the award have used their chosen pieces of artwork to present to the examining Boards of Universities as an additional means of supporting their application for enrolment.

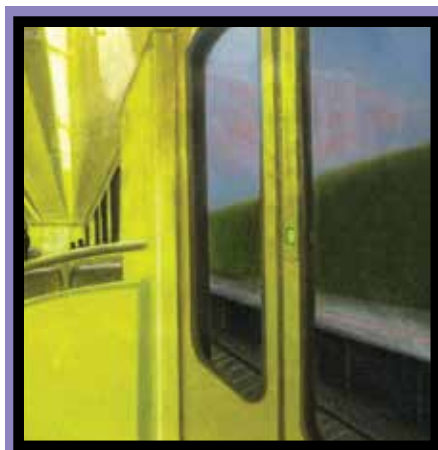
Whilst there has been a number of significant changes since those days in the late 1980s, particularly relating to the addition of Secondary Schools and the Senior Art School Curriculum, The Rotary Club of Box Hill Burwood has maintained its focus on developing youth art through their Rotary Box Hill Burwood Student Art Prize.

This year the winner of the \$500 Student Art Prize was Patrick Boothey, Year 12 Student from Kingswood College, for his work titled "Delta 1". Second Prize (\$300) went to Amy Biggelaar ("Monochromatic") also from Kingswood, and Third Prize (\$200) to Lana Yang ("Eyes on Me") from Mullauna College.

RAY McLEOD-DRYDEN



PICTURES: (Above) Presentation to winner Patrick Boothey by RCBHB Art Show Director Simon Wheelton; (Below) Third Prize winner Lana Yang being presented with her Certificate. (L to R Student Art Coordinator Ray McLeod-Dryden, Lana's mother, Lan Yang, Lana Yang (student) and Simon Wheelton)



Patrick Boothey's winning entry "Delta 1"

AYURVEDA IS A NATURAL WAY TO WELLBEING

YOUR HOLISTIC HEALTH-CARE CHOICE

SCIATICA

GUT HEALTH

JOINT PAIN

POST PARTUM

INSOMNIA

The Health & Wellbeing Studio
1860 Toorak Road, Camberwell, 3124
info@reviveayurveda.com.au
www.reviveayurveda.com.au



Every quarter – summer, autumn, winter and spring – 5000 copies of *The Bulletin* are delivered to local businesses, council offices, libraries, community centres, neighbourhood houses, op shops, cafes, banks, council service centres, rotary and lions clubs and many other locations – see 'Find your copy of *The Bulletin*' elsewhere in this issue.

Being local we'll reach your target audience.

ADVERTISING RATES (per issue)

Box Ad (6 lines): \$55

Eighth-page: \$98

Quarter-page: \$185

Half-page: \$306

Full-page: \$485

Banner (cover): \$400

All listed prices are GST inclusive

Pre-booked print-ready ads must be submitted by our advertising deadlines of 1 February, 1 May, 1 August and 1 November. Otherwise, should you wish to have *The Bulletin's* Graphic Designer assist you with your ad – there is no charge for this service – the deadline is two weeks prior. A completed booking form is required to allow us to allocate space in the magazine.

We also have our Local Classifieds Directory – now FREE to all local businesses.

**Email advertise@burwoodbulletin.org
or phone 0413 412 844**

A not-for-profit organisation, Burwood Bulletin Inc. is run entirely by volunteers.



IT'S been a wonderfully exciting time at Box Hill South Neighbourhood House, with the creation of a Sensory Garden Space over the past three months. This was a Community Project funded by the Suburban Rail Loop Community Projects Authority, and we are very grateful for their support. The construction of the garden has brought people together, creating a welcoming and inclusive space for all that will continue to be a place where the community can come together to grow and learn.

The garden was designed by qualified horticulturalist Susan Berkley, and she has been instrumental in the entire construction. Plants have been carefully selected for their sensory qualities of touch, smell and visual appeal, and as the garden develops over time, more will be added to the space. Volunteers have also helped throughout the process, building garden beds, moving soil, digging, installing a watering system and planting.

The Sensory Garden has been designed to be a community space, where people can meet, engage with others and learn about the natural environment. Its accessibility and engagement will be encouraged through volunteering opportunities and knowledge sharing. This will continue as we design programs and activities related to the garden,



Birth of a garden for all

including horticultural and sustainability programs for the local community. We continue to work with the Whitehorse Urban Harvest Group, Umbrella Dementia Cafe and the Whitehorse Council's Sustainability Team to develop programs to connect the community.

We have some horticultural workshops planned for this year to teach people how to propagate their own plants; along with a Kindergarten incursion to provide intergenerational connections. Next year we will be working with Year 12 students from Box Hill High School to build this community connection further.


Councillor Tina Liu attended the official opening on 5 September, along with our committee of management, House participants and volunteers.

We look forward to the garden growing and giving back to the community.

PAMELA MILLS

BELOW: Volunteers help prepare the Sensory Garden.





where Passion and Creativity meet...



With over 33 years' hairdressing experience, Yvonne takes pride in her work and is committed to fully understanding your needs and desired results.

39 Burwood Highway Burwood
Phone: 9808 8218
www.ennovyhair.com.au



I am your State Upper House representative for the Southern Metropolitan Region.

My role includes advocacy and support for all local residents & if you need any assistance, please contact my office.

Alternatively, scan the barcode to have your say!



Wishing you and your family a Merry Christmas & a happy and safe new year!



DAVID DAVIS MP

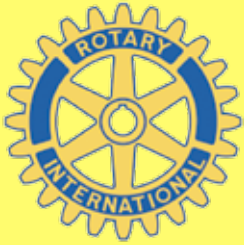
MEMBER FOR SOUTHERN METROPOLITAN REGION




[@DavidDavisMLC](https://twitter.com/DavidDavisMLC)

P: 9827 6655
 E: david.davis@parliament.vic.gov.au
www.daviddavis.com.au





The Rotary Club of Box Hill Burwood **OP SHOP**

113 Canterbury Rd Blackburn
(2 doors from Woolworths)

BEST VALUE PRICES

- Quality ladies / gents clothing
- Shoes – Jewellery – Bric-a-brac
- Electrical goods – Books – Toys

All funds go to Rotary projects –
mostly local, some overseas.

Open Mon–Fri 10am–4pm; Sat 10am–1pm

Donations welcomed: clean quality clothing,
books, jewellery, electrical goods, etc.

PLEASE DONATE WHEN SHOP IS OPEN.

Contact shop on 0451 200 237
or Clem on 9898 1889



boxhillrotaryopshop

Professional Packing & Unpacking Services
Sorting, Organising, De-Cluttering & Styling



Efi 0414 772 851

Leanne 0425 799 786

packersisters1@gmail.com

**Residential &
Commercial Spaces**

**Units, Apartments,
Homes, Offices**

**Trusted, Reliable &
Efficient**

- Kitchen, Lounge, Dining
- Bedrooms, Wardrobes
- Bathroom & Laundry
- Bar
- Study, Office
- Studio

Martyn Littlechild Carpenter

Traditional Carpentry

- Restorations
- Renovations
- Repairs



Phone 0407 477 740

Email: martyn@manaroundthehouse.com.au

Glen Iris

ABN 38 084 595 418



SAMARINDA locals for locals

Home Care Packages

This program is subsidised by the Australian Government for older people who require ongoing care and support to live independently at home.

There are four levels of Home Care Package depending on your assessed needs, ranging from very basic care through to high care. Samarinda can assist you with contacting My Aged Care, the Australian Government aged care entry system. We can even be with you through the assessment process if needed.

How to get started

Our professional staff will assist you to make informed decisions, design your care plan, select your service providers, develop your individual budget and ensure that services enable you to live independently at home for as long as you can.

What will it cost?

For people in receipt of the full pension, Samarinda has opted not to charge any fees, however if your income level is above the Government determined threshold then we are required to collect an income tested fee set by Centrelink.

For a confidential chat or more information, please contact the Coordinator
Tel: 9058 6064 Email: intake@saas.org.au



286 High Street, Ashburton • Tel: 1300 591 464 • www.samarinda.org.au

*This is an encouragement for readers to explore another FREE
local community newspaper.*

- Editor

EastsiderNews

News, views and items of interest for residents of Melbourne's east

Discover! Read! Contribute!

Eastsider News, now heading for its 21st issue, is your opportunity to hear about and be heard by your community. It offers an online vehicle for you to promote community events and to write on local and broader issues that interest or concern you. Don't be shy, visit the website, take out a free subscription and enjoy the benefits.

Website: eastsidernews.org.au

Target: canopy cover!

THE not-for-profit community group KooyongKoot Alliance, made up of over 20 Friends and Advisory Groups from the Gardiners Creek Catchment, do not just advocate for a strategic plan for the catchment, but plant tens of thousands of plants to strengthen our green corridors and spaces in our catchment. Recently they had their second AGM, with guest speaker Greg Moore, who spoke on the subject "Your trees are worth saving". He hit the nail right on the head with a number of pointed facts.

The first around the magic number 30%.

A forest is defined by a tree canopy cover of or greater than 30%. At this level and above the environmental benefits are maximised. There is also an increase in property value when trees are present, until the cover hits 30%. The target canopy cover for urban cities in Australia under climate change should be 30%. At present our cover is well below that figure and we are losing trees at the rate of 1-1.5% every year, mainly from private land.

Greg also highlighted the importance of big old trees, citing a recent study finding that to replace the carbon stored by one large, urban, mature oak, would require 48,000 seedlings! We have known for decades that trees are associated with 30 to 50 other species – birds, mammals, reptiles, insects, fungi, algae, etc. Tree removal sees the demise of most, if not all, of these species. In a recent study of a single ancient English oak in the UK, it was found that there were over 2000 dependent and associated species.

It is clear that trees are important not just for biodiversity, but in lowering summer temperatures by up to six degrees. Otherwise, the impacts of climate change are going to be felt much more profoundly.

So it sits with all of us to protect and care for our trees, either on our own land, or through the likes of the Friends Groups within the KKA (and beyond), or by encouraging your local council to have a long-term tree planting program. Our collective advocacy is of great importance.

As is our action.

(From left): Kooyong Koot Alliance members Su Dempsey (Blackburn Creek) Pam Welsford (FO South Surrey Park) Secretary, Greg Moore, Rex Dusting (FO Valley Parade & Scotchmans Creek) President Graham Ross (Rewilding Stonnington) KooyongKoot Catchment Keeper Sam Russell (Urban Guerillas).





Hartwell Shopping Centre
Toorak Road/Camberwell Road, Camberwell



Personal Training Studio
Strength & Conditioning
Private & Semi Private
Sessions

Train with someone who
GETS you.

Better With Sarah
1118 Toorak Road 3124
www.betterwithsarah.com.au

NO SALE NO CHARGE!



HAIM
REAL ESTATE

627 Camberwell Rd, Camberwell
Ph: 9813 3133
www.haimrealestate.com.au

BEST SERVICE = BEST RESULTS

JA CAIN
REAL ESTATE

BRENDAN CAIN

Mb: 0400 060 982 e: brendan@jacain.com.au
Ph: 9805 2900 w: jacain.com.au



VHL BUSINESS & TAX SOLUTIONS
ACCOUNTANTS & ADVISORS



9193 7569
WWW.VHLACCOUNTING.COM.AU
611 CAMBERWELL RD CAMBERWELL 3124

**Support your local traders
and businesses.**

Shop in Hartwell!

**Everything you need is in the
heart of Melbourne.**

holistic myotherapy

NORTHEAST
WELLNESS

1150 Toorak Rd, Camberwell
(inside The Health & Wellbeing Studio)

www.northeastwellness.com.au

Le Croissant

Est'd 1969, Le Croissant is one of Melbourne's oldest French Patisseries.



1204 Toorak Rd Camberwell
Ph: (03) 9809 2263
Open Wednesday thru til Sunday

Camberwell
BATHROOMS

1202 Toorak Road Camberwell
Ph. 9889 0005
e: info@camberwellbathrooms.com.au
www.camberwellbathrooms.com.au



ACCORD
FAMILY LAW

624 Camberwell Road
Camberwell 3124
Phone 0429 062 679
www.accordfamilylaw.com.au
Accredited Family Law Specialists

Follow or Like us on Facebook and Instagram
Click on the QR Codes to check out what's on in Hartwell
"Live, Love, Local"

Facebook



Instagram



Hartwell Association of Residents and Traders Inc. (HART) ABN 91122531379 Inc No. A0056770S

WITH the invention of the humble paint tube in the 1840s, artists were able to leave their studios for the first time and venture into the Australian bush. A new era of artistry was born: *en plein-air* – a French term meaning ‘in the open air’ – quickly became a widespread painting style among Australian artists. The first artist to introduce this into Australia was Tom Roberts. Every Saturday, for four years (1885-1889) Tom Roberts, joined by his friends, Frederick McCubbin, Louis Abrahams, Arthur Streeton, Charles Conder and Jane Sutherland escaped the monotony of the city for a serene weekend of painting and camping in Box Hill, the last stop on the train line.

They continued to set up camp every weekend and painted the bush around Gardiner’s Creek. Their friend Louis Abrahams was forced to abandon art and take over his family’s cigar business. The story says he donated dozens of recycled 9x5-inch cigar box lids to his friends. Together the group of artists painted on the cigar box lids and this became Australia’s first ever Impressionist exhibition, held at the Buxton Rooms in 1889.

Over a century later, the Heidelberg School’s interest on Australia’s art culture continues, especially for the students at Box Hill High School.

In Term 3, 2023, Year 10 Art Students at Box Hill High School investigated the history of Australian impressionism under the guidance of our teachers, Miss Brewer and Mrs Gyarmathy. We were able to explore and experience impressionism in both traditional and contemporary styles. We also embarked on a walking excursion to Gardiner’s Creek and the Box Hill Artists Park where we photographed and sketched the environment as inspiration for our final pieces.

Impressions of Box Hill



PICTURES:
(Right) Jiwon Chung
“Fluorescent Mulga”;
(Below) Darren Ma “ABG’s”.



While the 9x5-inch Exhibition may not be as significant as its 1889 precursor, it reflects the Year 10 Studio Arts students’ connection to the community, allowing us to showcase our artistic skill and individual interpretations of the impressionist style.

KELLY LAI & OLIVIA DUFTY
(Year 10 students, Box Hill High School)

In recognition of the excellent work of the Year 10 Students from Box Hill High School, Rotary Box Hill Burwood’s Student Art Co-ordinator Ray McLeod-Dryden was delighted to include Box Hill High School’s Year 10 9x5-inch Impressionist Exhibition at their Annual Whitehorse Art Show held from 26 to 29 October at the Box Hill Town Hall.

ABOUT OUR COVER



McCubbin Medal Award (Best in Show)
\$3,000

David Chen “Bondi Beach”

DAVID Chen was born in China and holds both Bachelor and Master degrees in Fine Arts. He also holds a Graduate Diploma in Art Education and taught Fine Arts at university for several years.

In 1991, David was selected to participate in “100 Famous Chinese Artists” a worldwide travelling exhibition. In 1992 he won the Silver Hawke Award at the Fourth International Art Contest, Nice, France.

David arrived in Melbourne in 1993 where he has worked as a full time artist. As well as conducting various painting workshops, he has held several solo exhibitions.

In 1994 his work was exhibited at the National Gallery of Victoria. David’s work is represented in private, corporate and municipal collections both in Australia and overseas.

David’s artistic credentials are impeccable. His classical style and technical skill, manifesting in sweeping, flickering, descriptive brush strokes, deep perspective minus the expected constricting vanishing points, and a refreshing use of abstract colour tonality secures him a rare place in the Australian contemporary art world.





Fine Design's philosophy is to provide clients with quality services:

- Professional service using current design techniques
- Lateral thinking approach to all design projects
- Maintaining effective communications with clients during assignments in accordance with specifications
- Quality documentation and skilful Tender to provide clients with valuable pre-construction design, keeping effective overall building costs
- Provision of services within the required time frame.

Our service

- Architectural and Interior Design
- Structural engineering design and certification
- Town planning and Building Permits
- Commercial and Residential development
- All under one roof services



262 High Street Ashburton 3147 • Telephone: 9886 9544 • Email: finedesign@finedesign.com.au



CONGRATULATIONS TO ALL OUR WINNING ARTISTS AT THE 2023 WHITEHORSE ART SHOW

ROTARY CLUB OF BOX HILL BURWOOD WOULD LIKE TO THANK ALL OUR WONDERFUL SPONSORS AND SUPPORTERS WHO CONTRIBUTED TO OUR 2023 ART SHOW.



Artist David Chen receives his McCubbin Medal and winning certificate from Rotary Box Hill Burwood Art Show Director, Simon Wheelton at the Gala Art Show Opening Dinner.

- Budget Car and Truck Rental
- Box Hill Institute
- Bendigo Bank / HLG
- Woodards Real Estate
- MBCM
- Fenton Partners
- Belle Property Group
- Deakin
- Nunawading Toyota
- Nunawading Auto Group
- Li's Pharmacy

- Creative Framing
- PackSend Blackburn
- Robinson Gill Lawyers Box Hill

Real Estate Agents

- Noel Jones Mitcham
- Buxton Box Hill
- Beaumont / Fletchers Property
- Cooper Neuman Real Estate
- Belle Property Mont Albert
- Woodards Blackburn

Rotary Club of Box Hill Burwood are delighted that the major beneficiary for our 2023 Art Show will be Whitehorse Men's Shed. All the money raised through sponsorship and the sale of paintings at our 2023 Rotary Box Hill Burwood Whitehorse Art Show will go towards accommodation for the Whitehorse Men's Shed

After losing their previous accommodation, they now have been offered premises in Whitehorse, courtesy of the council. However, they are in urgent need of funds to renovate the building to make it fit for purpose as a Men's Shed. The funds raised by our Art Show will go towards this very worthy project.

The Whitehorse Men's Shed serves a vital role in the mental health and social wellbeing of the "shedders". They learn skills in a safe and positive space, and in a spirit of camaraderie and support. They work on many projects, and many of their creations are donated to schools and community groups. The Men's Shed also has sessions for those with special needs such as dementia, frailty and chronic health conditions.

One of the success stories of the Whitehorse Men's Shed is the involvement in the wonderful Refresh program which assists at risk, disengaged adolescents. The men provide a mentoring role, which has assisted in turning around many young lives.

Volunteer Spotlight: Margaret Orange

TO state the obvious, volunteering takes time and energy and it is not every day that you find someone “working for free” for an extensive period of time. Margaret Orange, a long-standing volunteer, has been with *The Bulletin* for over 25 years.

When asked about how she started volunteering with us Margaret, who is also a member of the volunteer committee of the Box Hill Ballet Association, said, “I was made aware of the existence of a publication called the *Burwood Bulletin*, which offered free advertising to non-profit community organisations. And so I made contact to arrange an advertisement (for Box Hill Ballet), in the next issue”.

Subsequently, she read in a later edition that the magazine was seeking volunteers to help with the quarterly distribution. Margaret decided to

assist as a way to “give back” for the support given to the ballet school.

Margaret says one of the most enjoyable aspects is that “the *Bulletin* allows groups and members of the community to have a voice. And all this at little or no cost to them”. To Margaret this is very important in an age where non-profit groups struggle financially to promote their groups and activities to a wider community.

“With the disappearance of local newspapers, *The Bulletin* continues to be one way the community can be kept informed of the happenings in their local area and beyond, in print and for free, thanks to the continued support of our valuable advertisers”.

Margaret, who is a committee member, says that being on the committee allows insight into how the magazine evolves, employing “the talent of a small band of dedicated volunteers and the time spent in creating a great publication”.

Margaret not only assists with distribution, but is invaluable in providing input to the magazine’s production. We hope that she will continue on with us for many more years to come.

YOSHANTHI WELLAWA

Ballet with Margaret:



How did you become a ballet dancer?

I always had a love of ballet from an early age, but it wasn’t until I was in my early teens that the opportunity arose to be able to attend ballet lessons. The local ballet school (formerly Box Hill City Ballet Group, now Box Hill Ballet Association) was a non-profit ballet school, established by the local council with its main aim being to offer ballet classes at an affordable rate for all members of the community. Some of my high school classmates attended ballet lessons, and it was through them that I found out about the school.

What are your favourite dance styles?

My first love is classical ballet, for its strength, discipline and artistic grace. Jazz ballet is in some ways more challenging for me, mostly requiring very different rhythms and movements; but good for both the brain and the body!

Have you performed on stage?

The Ballet School has held an Annual Performance at the end of almost every year since it was established in 1951 – the first being held in 1952. All students are encouraged to take part in the performance, which showcases all the forms of dance offered at the school: Classical, Jazz, Tap, Contemporary, International Folk and Wu Tao. I have performed most years since I began classes a few decades ago.

Do you enjoy watching?

I always enjoy watching, especially seeing the progression of young students into their teens and twenties, gaining confidence, improving technique and enjoyment of dancing.

How has dancing inspired you?

Dancing is always challenging, good for the body and the soul and takes your mind off the stresses and worries of daily life. You always feel better after a class! And dancers are happy people!



Box Hill Ballet Assoc. Annual Performance

Sunday 3 December, 2pm & 7.30pm,
Doncaster Secondary College Performance Centre, 123 Church Rd.
Bookings: www.boxhillballet.com.au



MPRINT

COLOUR PRINTERS

Our number one priority is that all your requirements are met, efficiently and cost effectively.

- Catalogues
- Packaging
- Point of Sale
- Brochures
- Stationery
- Annual Reports
- Year Books
- Offset
- Digital
- Packing and Distribution

Contact Jean Paul
 jp@mprint.net.au
 0438 538 012
 www.mprint.net.au

Introducing

MORE than 550 people packed out the venue's theatre for the Opening Night concert at The Round on Friday, 13 October.

Signalling an inclusive, intimate and welcoming space reflected in the curved nature of the architecture, the new contemporary performing arts venue builds upon the legacy of the former Whitehorse Centre. It provides an expanded array of arts and cultural opportunities for the entire Whitehorse community to enjoy for generations to come.

The Round features a 600+ seat auditorium, 200 seat studio theatre, creative rehearsal studios, improved soundshell for outdoor events and improved car parking for the precinct, and it is able to host an expanded range of shows, functions and events. Retractable seating means it can be completely blacked out, making it ideal for movie screenings, dance rehearsals and small-scale theatre productions.

The studio is cleverly designed to open up to the outdoor soundshell and amphitheatre, becoming the stage for major outdoor events and festivals.

For more information about The Round performing arts centre, please visit www.theround.com.au



STEV COMPUTER
 IT Professionals, CELEBRATING 20 YEARS

Call: 0417 338 704
 Email: admin@stevpc.com
 Web: stevpc.com



71 Morack Road Vermont, Vic 3133

OPEN 9AM TO 6PM MON – FRI

Fast reliable IT services and solutions to residential customers, small to big businesses and charities.
 We come to you, or can assist by remote support.

Our services include:

- Laptop, computer and tablet set-up/repairs
- Mobile phone set-up/repairs
- Printer, scanner and smart TV set up
- Internet and wi-fi connection
- Annual servicing
- Data back-up, recovery and transfer
- Virus/Spyware removal
- Scam Recovery/Removal
- Computer cleaning
- Software upgrades

"We pride ourselves on working with our customers to provide the best solution for their IT needs in a fast, friendly manner"

**Call us today and ask about our
 SPECIAL ANNUAL SERVICE PACKAGE!**

*valid until 31 December 2023

THE ROUND



P: (03) 9561 0511

E: matt.fregon@parliament.vic.gov.au

F: [mattfregonmp](https://www.facebook.com/mattfregonmp)

the camera starts to turn

THE WHEEL is an experimental film, planned and directed by the film unit (media) students at the University of Melbourne in 1952. It runs for 50 minutes and was directed by Gil Brealey. Brealey went on to work as a television and film director, producer and writer with the ABC, Film Australia and the South Australian Film Corporation, for which he co-produced the acclaimed *Sunday Too Far Away* in 1975.

Another of the students, Ian Jones, later rose to be head of production at Crawford Studios.

Sound and script were rather primitive owing to the lack of equipment available at the time. The students were learning film techniques and how to direct. Their efforts didn't always quite succeed; but that is to be expected.

An article by Noeline Egan in the *Nunawading Gazette* (20/2/1991) tells some of the "inside story" of the making of the film.

A query in this column several weeks ago by historian Mrs Jean Uhl about a film on bushrangers, purportedly made at Blackburn Lake by university students, brought a response from none other than our local authority on all things theatrical, Max Grant.

Max recalls attending the premiere of the film, entitled *The Wheel*, at the University of Melbourne's Union Theatre in May 1954, and he has the souvenir program to prove it.

He says the film was made by the Melbourne University Experimental Film Unit with the screenplay written by Wal Cherry – later associated with the Emerald Hill Theatre – and produced and directed by Gil Brealey.

He has good reason to remember the film, as many members of the Mitcham Repertory Group, which he founded, worked on it as convict extras. Two MRG members, Ron Fawell and Daphne Powell's son, Malcolm Powell, also had feature roles.

As it happens, the film plot didn't involve bushrangers, but rather an intellectually handicapped boy thrown into society with no ability to support himself.



Local Camberwell Family Dentist

681 Burke Road Camberwell, 3124
www.drbobcvetkovic.com.au

Dedicated Oral Health Care

Dr Bob Cvetkovic and his team
provide a comprehensive
range of oral health care
services, ranging from
preschool children to caring for
elders, including dentures.



Call our clinic today to
book your consultation.

03 9882 3366

PICTURES: (Top) From the *Nunawading Reporter* 4 December 1953, “Members of a film production party from Melbourne University ‘shooting’ a scene at the Blackburn Lake. On the shore in this view are cameraman John Anderson, and Lindsay Tassie, and (on right) director Gil Brealey. Out on the raft, in one of the principal roles of the story, is John Storey, a law student”; (Below) a “strip” showing scenes from the film.



The program notes say it was made for the modest cost of £500, compared with the more than £10,000 it would have cost had it been made by a commercial company.

In a prophetic remark in the notes, Gil Brealey commented: “As I see the film for the thousandth time I cannot help feeling what a beautiful country Australia is and how many hundreds of films we could make right here”.

The program also gives some amusing insights into the “on location” aspects of *The Wheel*.

Fortified with donations of food from benefactors – 33 packets of corn flakes, 10 lbs of cheese, a dozen tins of camp pie and six packets of tea – the cast and crew installed themselves at their campsite – the Seventh Day Adventist campsite near the Deaf Institute’s farm on the banks of Blackburn Lake.

Their hosts were tolerant and forbearing, they reported, but they found that having their weekend’s supply of steak and sausages delivered didn’t go down all that well in the vegetarian community. Presenting the caretaker’s wife (not a coffee or tea drinker) with a bottle of coffee essence as a parting gift also proved a *faux pas*.

Attempting to float a raft on Blackburn Lake also proved to have its hazards. Ignoring the jeers of local youths that the craft wouldn’t float, the technicians persisted in their belief that it would. It didn’t. The lake sequence turned into what the program described as a “glorious shambles of sinkings, duckings and minor underwater explorations to clear snags”.

On the final day of filming 30 extras in period costume enacted the convict fantasy sequence. The souvenir program records: “For the scene bold volunteers ferried six horses from a riding school six miles away and thundered through Blackburn bushland in colourful dragoon garb”.

As far as we know, one of the few remaining copies of *The Wheel* is in the collection of the Whitehorse Historical Society, so, if your curiosity is piqued, enquire with them about the possibility of viewing the film.

JOEL ANDREWS



MERRY CHRISTMAS

*Wishing our community a
safe and happy festive
season.*

I B V I

I B V I ON THE
GREEN

WWW.BURWOODVILLAGE.COM.AU

No secret to street parties!

FOR almost twenty years, the annual street Christmas Party in Great Valley Road, Glen Iris, has been a well-attended and much-anticipated event. Long-time resident Chris McKillop shares the simple rules for its success.

Established by then-resident Francoise many years ago to get to know her neighbours, the party's format hasn't changed much, and continues to flourish as a lovely way to celebrate the end of the year together. All residents of Great Valley Road are invited. Families are asked to bring a plate of food, their own drinks and chairs. Invitations are designed, printed and hand delivered into everybody's letterboxes in mid-November, as well as being posted on the street's WhatsApp page. A few years ago we set the date as the second Sunday afternoon in December, commencing at 5pm and running until sunset (or later). Fortunately, we don't need to close off the street as the party is always held in Back Creek Reserve, which abuts Great Valley Road.

Preparations are not burdensome on anyone. Someone volunteers to create the invitations and distribute them to letterboxes. We usually ask in the invitation for the loan of a few trestle tables and a rubbish bin, and the response is always generous. Name tags are provided and everyone is encouraged to wear one, so newer residents can easily identify "old-timers" and be identified themselves. Numbers have remained fairly stable over the years, with several former residents often dropping by to say hello.

Occasionally there have been little tweaks to the plan - one year the Gymbus made a free surprise visit on its way back to its Hartwell depot; for several years one family made piñatas, filled with sweets donated by other families, for the younger children. Santa has dropped by on occasion too.

A box is always provided for the collection of foodstuffs and goodies, which the street donates to

Camberwell Salvos (we've been doing that for about ten years).

Of all the street parties I've attended, the one I enjoyed most - and was the most well-attended - was in 2020. Our street had created a WhatsApp group some time earlier, and during lockdown had remotely run many activities, including an Art Show, a Photography Challenge, a Light-Up-The-Street Christmas-in-July, an AFL Grand Final sweep, and a Melbourne Cup sweep. We'd also raised funds for a local homelessness charity. The Christmas Party was the perfect opportunity to award prizes for some of these activities and to celebrate getting a break from lockdown. We invited our local councillors (retiring and newly elected), as well as the coordinator of the charity, to attend and many new faces from the street were there for the first time. We were also able to present a cheque to Avalon Centre (a community support organisation) from funds we'd raised by selling mini plum puddings and the profit from the sale of our street cook book. It was a grand celebration which included carol singing and a children's pageant - a fitting get-together of neighbours and new friends at the end of a long and uncertain year.

I believe our Christmas Party's success lies in its simplicity - Fun, Food and Friends - with very little cost or fuss involved. It's a formula that has stood the test of time and could be replicated anywhere.

CHRIS MCKILLOP, JEFF PATCHELL &
BOB KEARSLEY





MUSIC LOGIC BOX HILL STUDIO

No One Teaches Music Like We Do!

Piano lessons in Box Hill South.

Catering for total beginners to advanced students – For children through to seniors.

Playing for pleasure – All music styles.

Lessons are enjoyable and hugely productive.

Expect to read and understand music easily, to play and perform with confidence.

Discounts for groups (*Ask why Group Lessons could work better for you*).

Arrange an introductory lesson to find out how Music Logic works.

Learn in 18 weeks what would normally take 18 months!

"The best method of piano teaching ever! Ysolde is a friendly and dedicated teacher who understands exactly what her students need."

Arundhathi Leksmi
Student

Phone Ysolde on 0412 174 093

Unit 2, 3 Peace Street, Box Hill South

“ The most important thing about a haircut that suits you is the design. Getting that haircut that holds its shape for 6 weeks or more is an advantage that comes from going to D’Alton Hairdressing. Precision in the construction of your hairstyle, which is engineered through cutting the required shape to hold your style in good shape until it grows out. We have a lifetime of experience and are dedicated to the art of hairdressing. ”

D’Alton HAIRDRESSING

Phone 9889 5152
1423 Toorak Road, Burwood

75 years married!

diamonds are forever



JOAN and Russell Collins (aged 97) have just celebrated 75 years of marriage.

Born in Melbourne, married life commenced in Shepparton. They rented one room and shared a kitchen and bathroom with a grumpy landlady.

Joan had been a stenographer prior to marriage (sometimes rubbing shoulders with people such as “Weary” Dunlop) and Dad was a teacher at Shepparton High School. They transferred to Essendon when first daughter Jenny was born, and son Alan and second daughter Valmai made their very welcome appearances in the course of time. Joan and Russell now have 15 grandchildren and 16 great-grandchildren.

Church-going people, they have lived by their faith and served others all their life. Russell has written many a sermon, written books on scriptural matters and Joan baked thousands of casseroles and little butterfly cream cakes. Hospitality from them was always warm and gracious and a sanctuary for lonely people.

They now live with their daughter and her husband, who built onto their house to accommodate them (not many men build for their in-laws!).

Throughout their lives they sang in choirs, drove Studebakers, travelled within Australia and overseas, and enjoyed all that is beautiful and uplifting that life can bring.

Here’s to continued health Joan and Russell! You are much loved!

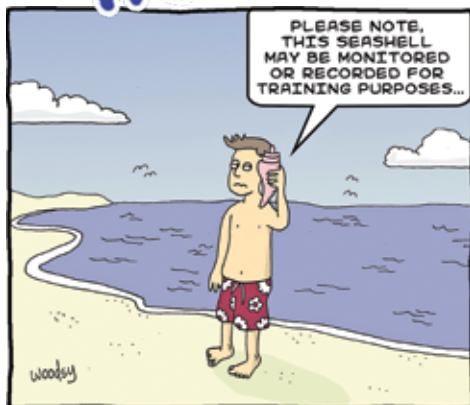
JENNY ROE



PICTURES: (Top) Joan and Russell on their wedding day in 1947; (above) the extended family this year at the anniversary gathering.

woody

insert brain here



Real Op Shop Prices!

Best value in town

We'd love to receive your donations of quality goods for sale in our Op Shop.

Lions Op Shop

Mon–Thur 10:30am–4:30pm (Fri 4pm),
Sat 9:30am–12:30pm

1350C Toorak Rd, Camberwell
(Burwood Village – next door to Jagers Carpets)

Call the Op Shop on 9809 4950
or Margaret on 0409 389 927

WE'RE HERE TO HELP YOU – OUR COMMUNITY



**LIONS CLUB OF
BOROONDARA CENTRAL**



ERRATUM

In our last issue, with the story *Community at the crease* we inadvertently ran the incorrect logo: that of the Burwood District Cricket Club, instead of the Burwood Cricket Club.

We would like to thank a reader who brought this to our notice, and apologise for any confusion it may have caused.

Editor



Choose service with heart.
Choose Goodwin Close.

We're here for you

Choose to live with confidence at Goodwin Close, where you can enjoy low-maintenance, independent living with the support you require.

Serviced Apartments now available.

Retire with confidence.
Book a tour today!

1800 550 550
keyton.com.au



50 YEARS OF SERVICE TO THE COMMUNITY

THE East Burwood Centre, now known as Uniting East Burwood, opened its doors in this building on Monday, 17 September 1973, at 9.30am. It was the result of one man's vision of a safety net for people he encountered as a minister in East Burwood and as a Lifeline Counsellor – “a listening ear, a caring voice”.

For staff, volunteers and participants, the history of the activities in the years that followed is a mixture – personal struggles, friendship and wellbeing, and the skill and dedication of the people who have worked so hard to maintain the services.

There is another special element that we celebrate – the initiative and steadfast commitment of the congregation of Burwood Heights Uniting Church (previously East Burwood Methodist) and the many other supporters who have shared the privilege of contributing for the people who come through the Centre's door.

Circumstances have undergone many changes in fifty years, as have the programs offered, but serving the community is always the Centre's core purpose.

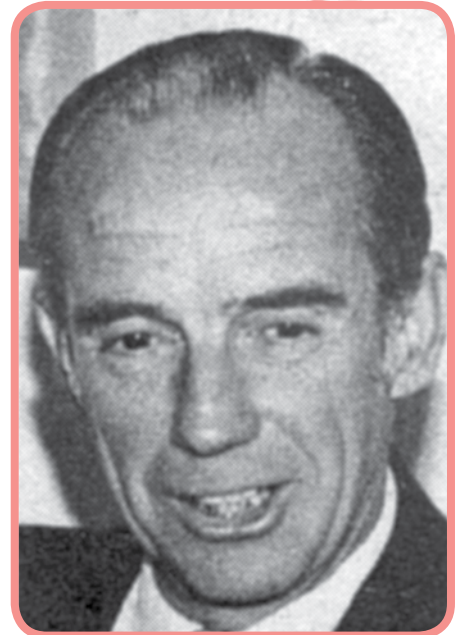
An idea becomes a reality

The legacy of Rev. Ern King's ministry at East Burwood Methodist Church is the people who have been helped during the last 50 years, and the care that will continue to be offered.

He wrote of the Centre's origin, calling it “the idea that became a reality”:

As a Lifeline worker, I became aware of the extent of marital strife, family breakdown and loneliness in the community. One thing that struck me was that the neatly manicured lawns and three-bedroom brick houses in the eastern suburbs were, on the surface, expressions of respectability. But that was only a thin veneer under which lay all sorts of problems. There was a great need for a local centre, staffed by professional people and trained volunteers, where real help could be given.

East Burwood Methodist church congregation fully endorsed the idea of establishing such a facility and there followed months of planning and organization – setting up, negotiating finance and finding the people to run it. A new manse was purchased so that the existing on-site dwelling could be made available, furnished by donations.



**The Rev.
Ern King**

The nearby Anglican Church of the Ascension offered support. Twenty-four members of both churches took up the challenge to train as volunteer telephone workers, and a social worker was appointed to provide supervision. The two congregations also worked together in both administration and fundraising.

As this new agency became known, the phone calls and interviews increased and it became obvious that basic assistance such as food supplies were needed. Other on-site services were introduced, meeting different needs as they became evident.

On the 20th anniversary in 1993, Ern wrote again:

It gladdens my heart to know that the Counselling Centre is still operating and serving the community. There are many happy memories, not only of the work and support prior to the opening, but also the joy and excitement of that memorable day 20 years ago when we were able to open as a viable and fully operating Centre.

Ern King left Victoria in 1975 and died in Perth in 1996. He will always be remembered as a man who followed the example of his Lord in ministering to those needing that “real help”.

LORRAINE JAMES



Services include:

- Warranty handbook service
- Brake and clutch repairs
- Steering and suspension
- Exhaust and muffler replacement
- Engine management diagnostic
- Licensed vehicle tester, Roadworthy

We also offer:

- Local pick-up and delivery
- Priority taxi service
- Courtesy vehicle on request
- Modern customer lounge
- Close to public transport



9888 7000
21 Duffy Street
Burwood



THE Burwood Community Garden is nestled in a very beautiful setting on Sinnott St. Burwood near the newly replaced bridge that spans Gardiners Creek. It was opened in 2014 as part of the Council's development of the Gardiners Creek Reserve, and was originally part of the Box Hill Community Garden.

We provide residents with a wonderful opportunity to pursue their gardening skills and activities by renting out plots. As a plot holder, you get to grow fruits, flowers and vegetables; and you get to meet and interact with others having similar gardening interests. This enables you to make new friendships with different community groups – currently one of the plots is rented by a local early learning centre and kindergarten.

Just at the entrance to the garden is the Early Settler's Cottage, or the Settler's Shelter, which was constructed as a model to demonstrate the housing and building techniques used in some of the first houses of the early European settlement in Box Hill. Interestingly, the walls of this structure, some ruined and some remaining, were made of wattle and daub.

The garden itself comprises sixteen plots, which can be rented by the residents of the City of Whitehorse and surrounding areas. To do so, simply fill an application form and pay the joining fee of \$20 and a deposit of \$50. The deposit is refunded if, when you leave, the plot is in good condition. The annual fee for a plot is \$25, that also gives you access to a storage shelf in the shed. A committee manages the garden, so if you have a passion for gardening and would like to apply for a plot, contact the secretary at burwoodcg@gmail.com for an application form.

PETER SMITH



Gardening together



LIONS
TRADITIONAL CHRISTMAS
**CAKES &
PUDDINGS**

**AVAILABLE FROM LIONS CLUB OF BOROONDARA CENTRAL
AT THESE OUTLETS:**

LIONS CLUB OF BOROONDARA CENTRAL OP SHOP

1350C Toorak Road, Camberwell (Burwood Village) Phone 9809 4950

BUNNINGS WAREHOUSE

Burwood Road, Hawthorn 1st, 2nd, 3rd Weekends in December

FURTHER OUTLETS IN BOROONDARA

Call Wayne 0400 556 624.

lions australia
WE SERVE



Come for the
activities.
Stay for the
friendships!

At the Craig Family Centre, we offer a broad range of programs and events including Kindergarten, Sessional Childcare, Playgroups, Homework Club and a range of community programs through our Neighbourhood House.

Social relationships are essential for our physical and mental wellbeing. All of our spaces and programs are designed to get us connected and feeling supported.

Call us to learn about the different ways you can get involved. We would love to hear from you!



Craig Family Centre
7 Samarinda Ave, Ashburton
www.craigfc.org.au
(03) 9885 7789
enquiries@craigfc.org.au
Located next to Ashburton Pools & Recreation Centre

In Box Hill Cemetery there is an unobtrusive grave – but one that a reader is keen to find out more about.

Archibald and Sandy the Warhorse

DOES anyone know the story of Sandy the War Horse?

Sandy is Australia's very own War Horse – the only one to return home from the First World War. He was accompanied on the trip back to Australia by Private Archibald Thomas Jordan, then of the Australian Veterinary Corps. Jordan had been in hospital since April 1917 and had been classed as permanently unfit for further active service.

I'm looking for information about, and descendants of, Private Jordan (Jordon?). His family were apparently from Ferntree Gully, where Archibald was born in March 1880 (There's a possible discrepancy about where he was born. I read his war enlistment papers on the National Archives of Australia and it clearly says born Fern Tree (Ferntree) Gully, Victoria; however, another record says Bourke, New South Wales).

He enlisted on 22 February 1915 in Melbourne and his last listing was the Australian Veterinary Corps – which explains how he came to be in charge of Sandy. His home town is recorded as Kew, Victoria.

Archibald died in 1923 and is buried with Archibald James Jordan (whom I believe is his father) and Annie

Sandy the War Horse

In the First World War 136,000 "walers" (the general name applied to Australian horses abroad) were sent overseas for use by the Australian Imperial Force and the British and Indian governments. One horse from the 136,000 made it back to Australia. And that was Sandy.

He belonged to Major General Sir William Bridges, who subsequently died at sea of wounds he had received at Gallipoli. He was one of 6,100 horses who had embarked for Gallipoli. However, very few of the animals were put ashore and Sandy was sent back to Alexandria.



Russell Jordan (his mother?) in Box Hill Cemetery. His is the grave of the soldier who took care of Australia's own War Horse and formed a bond with Sandy, making sure that he made it home in the best possible condition after all the struggles and trauma that this horse would have been through. But it is currently an unmarked grave, and when I searched the Box Hill Cemetery records online there was no documentation of him.

I am not a relative, I merely wish to find out more about what can be done to have Archibald Jordan honoured and given a plaque. He lies at rest, but it would be lovely to see a commemoration put on his grave acknowledging this service – and, perhaps, too, acknowledging those of his family buried with him.

I would also dearly love to see a photo of him.

REBEKAH MITCHELL-MATTHEWS

email: celticwolf74@gmail.com

PICTURES (clockwise from top): Sandy was the only horse to return home from Gallipoli in 1918. Major General Sir William Throsby Bridges, who stands beside him, was shot by a Turkish sniper at Gallipoli, and ultimately died from his injuries. Image via the Australian War Memorial; Archibald Thomas Jordan's grave at Box Hill Cemetery; Walters (Aussie Horses) fed and watered, WW1.



Sandy remained in Egypt until being transferred to France during March 1916.

In October 1917 the Minister for Defence called for Sandy to be returned to Australia for pasture. In May 1918 he was sent from the Australian Veterinary Hospital at Calais to the Remount Depot at Swaythling in England, then in September on to Melbourne, accompanied by Private Jordan. Sandy saw out the rest of his days at the Maribyrnong Remount Depot, until his increasing blindness and debility prompted the decision to have him put down in May 1923. His head and neck were mounted and became part of the Australian War Memorial's collection.





MELBOURNE TRAMWAYS BAND

83rd Season of Wattle Park concert dates:
2023–2024

Sunday 17 December 2023
Sunday 25 February 2024
Sunday 24 March 2024
Sunday 21 April 2024

Brass & Big Band
Brass Band
Big Band
Brass Band

The concerts are all scheduled to commence at 2:30pm – weather permitting.

Take Yarra Trams No.70 from the City to Wattle Park, which is situated on the corner of Riversdale and Warrigal Roads in Surrey Hills (stop 59).

Entry is free and limited parking is available. Toilet facilities for the disabled are readily accessible.

If a concert is to be cancelled, we will advise Parks Victoria by midday and you may check with them on 131 963.

Any requests: email the secretary: exec@melbtramband.org.au

THE Melbourne Tramways Band's free public recitals at Wattle Park in Melbourne's eastern suburbs, represent a tradition rivalling the history of the park itself. The band commenced its regular concerts in November 1940 and the annual seasons of monthly concerts (September to April) have continued to this day.

Despite the transfer of the management of Wattle Park from the Public Transport Corporation to Parks Victoria in 1991, the Melbourne Tramways Band has continued to present its concerts, thereby maintaining a valuable link with the park's tramway origins.

A short history

Originally known as the 'Melbourne Tramways Employees Band', the band was formed in 1888 by the Melbourne Tramway & Omnibus Company. The bandsmen were all serving employees and appear to have been paid for their services. Prior to World War 1, the band was very well known for its regular concerts at the South Melbourne beach.

Following the amalgamation of the MTOC and the various electric tramway trusts to form the Melbourne

& Metropolitan Tramways Board, a core tramways band was once again established in the late 1930s, involving serving employees from across the network. The band was called the Melbourne & Metropolitan Tramways Band and became well known throughout the community for its public performances, particularly its monthly recitals at Wattle Park. In 1986 the band's name was changed to the Melbourne Transit Band, to reflect the re-organisation of Melbourne's public transport infrastructure. In March 2001 however, the band gained approval to acknowledge its history and return to the name by which it is best recognized – the Melbourne Tramways Band.

It is not generally realized that although the band retains its strong links with Melbourne's public transport services, the band has long been community based, comprising musicians who give freely of their time to ensure valued traditions are maintained and to promote the benefits of public transport.

The Tramways Band now presents two major ensembles: the original Brass Band and its stage band 'Melbourne Tramways Big Band'.



Camberwell

Betta

GO LOCAL
That's *Betta*!

Betta Brands.
Betta Deals.
Betta Service.



EXCLUSIVE OFFER

GET \$50 OFF*
YOUR NEXT PURCHASE

Show this code in-store or enter

50OFFCAM

online for \$50 off your next
purchase - It's that easy!

*Redeemable only at Betta Camberwell, when you spend over \$200. T&Cs Apply.
Visit www.betta.com.au/familyandfriends for further details.

Camberwell

Betta

BETTA CAMBERWELL

1110 Toorak Rd, Camberwell VIC 3124

PH: (03) 9809 2222

Open: Mon - Fri 9am - 5:30pm | Sat 9am - 5pm | Sun 10am - 4pm

What do we all want?



WINNING 12 million dollars on the Powerball is probably the most common first answer to the question “What do you wish for?”

But on second thoughts, most of us really want something easier to get: peace of mind. The peace of knowing that everything is under control. That things are being looked after, that there are people doing what they’re supposed to do and you don’t need to be scared or anxious.

The older we get, the more important that peace of mind becomes.

“Who is going to look after me? Who is going to make those decisions that I might not be able to make if I lose the ability to think straight? What’s going to happen to my pets? My garden? My kids?”

We take for granted that we’ll be around forever, doing all the things that have to be done in the way they should be done. But what if we suddenly can’t? What if we get sick, start to lose our memory, have an accident?

The best way to make sure we’re not horribly surprised by nasty shocks is to make plans for all the circumstances that might happen.

One of the smartest ways to plan for the future is to sit down and decide how you want to be taken care of if you lose the ability to make decisions. There’s a very clever document that you can write that includes how you want your family to care for you, where you want to be taken if you can’t live at home, who you want to make decisions for you if you can’t speak.

All the big things like what kind of funeral you want, and all the little things such as what kind of music you would like and what colour of flowers are your favourite.

It’s called an Advance Care Plan, and it gets witnessed and signed by your doctor. It becomes a “living will” and it’s a legal document that makes sure your wishes are respected.

It gets stuck to the side of your fridge, and if an ambulance is necessary, the nice ambulance person will take it with you and give it to the emergency physician. So if you don’t want to be given CPR, or be intubated or ventilated, you won’t be.

Once all the details are written down and witnessed, you can rest assured that what you have decided is what you will get.

And that will go a long way to allow you to sit back, heave a big sigh and enjoy some peace of mind.

If you would like to write an Advance Care Plan, call me, Dr Clare Headland, on 0468 404 233.

CLARE HEADLAND

Dr Clare Headland has been a teacher, Chiropractor and a Patient Carer in the Palliative Ward of the Olivia Newton-John Cancer Centre. She has an Advance Care Plan stuck to the side of her fridge, and is committed to encouraging as many people as she can to make their own plan for peace of mind. If you need one, call her on 0468 404 233. She works as a volunteer, so there’s no charge. Don’t wait ‘til it’s too late, ‘cos by then it *will* be too late.

Peanut butter for older adults

Aged 65 years or older? Worried about feeling unsteady on feet?

You may be eligible to participate in our research on peanut butter and functional capacity in older adults.

What is involved?

- Two visits to Deakin University Burwood campus to measure body composition (DEXA scan), muscle and brain functions
- A swab test to get inner cheek tissue sample
- Record your food intake for three days
- If randomly assigned to peanut butter group, eat peanut butter every day for 6 months.

You will receive a \$150 gift voucher upon completion!

For more information or to participate, email: NutStudy@deakin.edu.au

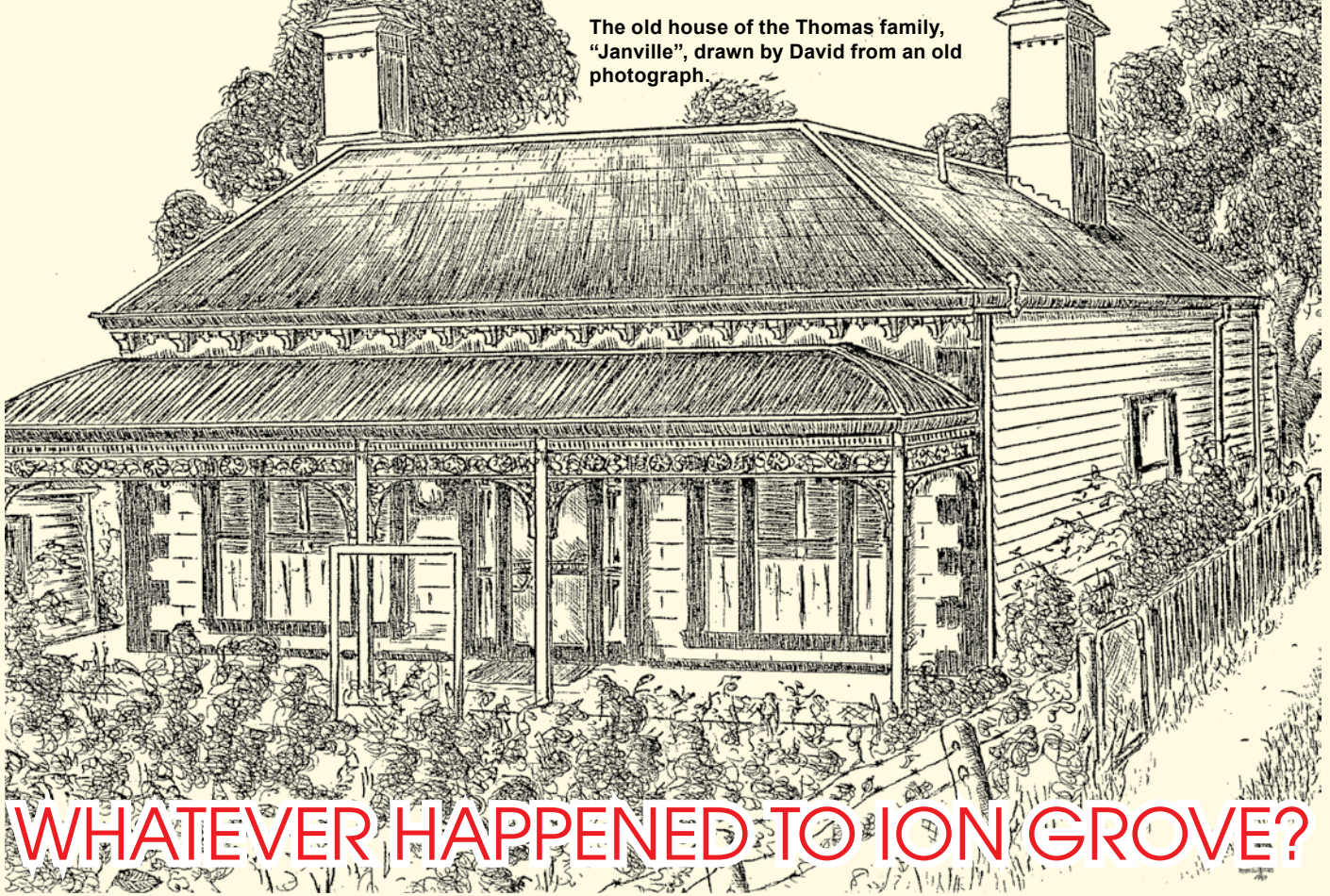
This study has received the Deakin University ethics approval (reference number 2022-279)

deakin.edu.au/ipan

Scan to check eligibility



The old house of the Thomas family, "Janville", drawn by David from an old photograph.



WHATEVER HAPPENED TO ION GROVE?

IN August 1903 my grandfather, Charles Hector Cecil Thomas, married Janet "Jen" Annie Tivendale, whom he had known and courted in Malvern where they had both grown up. They settled in nearby Burwood, where Hector (as he was known) had been living alone for almost a year, establishing a home and a market garden in Boundary Road (originally called South Boundary Road) – later renamed Highbury Road. Here they raised a family of ten children, the second eldest of whom was my father.

In 1954 my grandparents moved in their retirement from the still relatively rural part of Burwood to a smaller suburban home in Box Hill. The old family home, "Janville", remained until 1959 and was then demolished, the property and adjoining land having been subdivided. I clearly remember the large (to a child's eyes) old Victorian house, the rambling outbuildings, the brick-paved yard, and the pump near the back verandah, which had once drawn the family's water supply from a deep well. The rough and slightly bumpy driveway into the property from Highbury Road, leading down past first a flower garden and then the east side of the house, is now Sunhill Avenue. The land sloped down into a gully, at the bottom of which, where my grandfather's few cows grazed, was a shallow creek that meandered through occasionally swampy land up to and beyond Station Street. Its route is now a path and bicycle track. All that now remains of the actual family home are a brass doorknob which I salvaged from the demolition, and the name "Janville", surviving in Boronia as Janville Street – suggested by one of my father's siblings who lived in the district when names for new streets were sought from local residents.

My father had many memories of his early years, and recalled the re-naming of Boundary Road as Highbury Road. He also spoke of the excitement when the electric light was eventually installed at the house, and of the later arrival of the telephone. My father and his siblings, in the days of a safe and

almost deserted Highbury Road, would sometimes wander across to play and pick wildflowers in a thinly forested area locally known as Cratloe Wood – now commemorated by Cratloe Road.

When the Thomas property and the adjoining district were subdivided, it was decided to name two streets after the two eldest children of Hector and Jen Thomas – Leonard (born 1904) and Ion (born 1906). Bureaucracy characteristically bungled, for while my uncle was accurately acknowledged by the creation of Leonard Street (running east off Station Street), the authorities misread my father's name as the more familiar (though pronounced the same) Scottish version – "IAN". So Ian Grove was established, and remains so to this day.

My father, pretending to modesty, indifference, or the lack of sentimentality of many men of that generation, laughingly dismissed as unimportant my urgings to have the name corrected. After his death in 1993, I tried to have the adjustment made – as much through filial loyalty as to meet the community's increasing sensitivity to preserving local history. Sadly, my efforts to have Ion Grove granted its correct name met only with strong resistance which one local newspaper – the story having reached their desk – described as "vehement".

Thankfully, we are nowadays more aware than ever of the importance of preserving and accurately recording the once overlooked or dismissed links with our past. But the error of the misnamed street remains.

As you travel due east along Highbury Road you will see Ian (Ion) Grove on your left, just beyond the Station Street intersection. A short street, it doubles back and re-enters Highbury Road a little farther along. With nearby Leonard Street, it is a slim, surviving link with a family whose descendants are proud of the name of Thomas.

DAVID ION THOMAS

SOME RANDOM CHRISTMAS VERITIES

In A.D. 350, Pope Julius I, bishop of Rome, proclaimed December 25 the official celebration date for the birthday of Christ.

Because of their pagan associations, both the holly (associated with the masculine principle) and the ivy (the feminine) and other green boughs in home decoration were banned by the sixth-century Christian Council of Braga.

Christmas stockings allegedly evolved from three sisters who were too poor to afford a marriage dowry and were, therefore, doomed to a life of prostitution. They were saved, however, when the wealthy Bishop Saint Nicholas of Smyrna (the precursor to Santa Claus) crept down their chimney and generously filled their stockings with gold coins.

The first person to decorate a Christmas tree was reportedly the Protestant reformer Martin Luther (1483–1546). According to legend, he was so moved by the beauty of the stars shining between the branches of a fir tree, he brought home an evergreen tree and decorated it with candles to share the image with his children.

Commissioned by Sir Henry Cole (1808–1883), British illustrator John Callcott Horsley (1817–1903) designed the first Christmas card in 1843.

BURWOOD HIGHWAY MOWERS



Sales, Service, Repairs & Spares

Brushcutters & Blowers
Lawnmowers/Ride-ons
Sharpening service
Mulchers/Shredders
Hand mower sharpening
Edgers and Hedge Trimmers
Chain saws

33 Burwood Highway, Burwood
call Brendan or Jason
9808 5370

Tax on Trak

We understand Small Business

- General accounting
- Bookkeeping
- Tax preparation & Advice

Telephone 9889 6680

Elizabeth Dalton FIPA Reg. Tax Agent

1423 Toorak Road (rear), Burwood Village, Camberwell 3124

Email: admin@taxontrak.com.au



please
SUPPORT
OUR LOCAL
ADVERTISERS

Ye good olde days

THE following monthly summary of accidents was dredged from the December 1917 records of the British Royal Flying Corps and offered in a recent National Pilots Assn Service Bulletin. Who said flying was safe?!

RESUMÉ OF ACCIDENTS

Avoidable Accidents

THERE were six avoidable accidents:

1) The pilot of a Shorthorn with over 7 hours experience seriously damaged the undercarriage on landing. He had failed to land at as fast a speed as possible, as recommended in the *Aviation Pocket Handbook*

2) A B.E.2 stalled and crashed during an artillery exercise. The pilot had been struck on the head by the semaphore of his observer who was signalling to the gunners.

3) Another pilot in a B.E.2 failed to get airborne. By error of judgment he was attempting to fly at mid-day instead of during the recommended best lift periods, i.e., just after dawn and just before sunset.

4) A Longhorn pilot lost control and crashed in a bog near Chipping Sodbury. An error of skill on the part of the pilot in not being able to control a machine with a wide speed band of 10 mph between top speed and stalling speed.

5) Whilst low flying in a Shorthorn, the pilot crashed into the top deck of a horse drawn bus, near Stonehenge.

6) A B.E.2 pilot was seen to be attempting a banked turn at a constant height before he crashed. A grave error by an experienced aviator.

Unavoidable Accidents

There were 29 unavoidable accidents, including:

- The top wing of a Camel fell off due to fatigue failure of the flying wires. A successful emergency landing was carried out.
- Sixteen B.E.2s and 9 Shorthorns had complete engine failures. A marked improvement over November's figures.



- Pigeons destroyed a Camel and two Longhorns after mid-air strikes.

Cost of Accidents

Accidents during the last three months of 1917 cost £317/10/6 – money down the drain and sufficient to buy new gaiters and spurs for each and every pilot and observer in the Service.

SOURCE: *General Aviation News* March 4, 1974

Can you help?

We need someone who is interested in volunteering with us as Editor or Assistant Editor. Familiarity with Microsoft Office, or similar, is necessary; as well as understanding of, and/or experience in the sphere of editing.

Although you will be working from home, we will be able to provide any support you need in taking on the position.

Call Chris on 0413 412 844
or email editor@burwoodbulletin.org

The Suburbs of Melbourne

The Story of Their Growth

VI : HAWTHORN

BY C.E.S.

HAWTHORN could not very well help becoming a favoured residential suburb. Nature endowed it with charm, and when man had overcome the only barrier – the river – its place, as one of the most desirable of Melbourne's residential areas was practically assured. Ingenuity and imagination (affection too, no doubt) have been in many instances used to take full advantage of naturally designed sites for fine homes. The area that now is Hawthorn – thickly populated and for the most part charmingly built – must have appeared very attractive indeed to the first residents of Melbourne. Even to-day its "uncivilised" natural charm as it appeared to those few can be easily visualised. From the railway bridge at Burnley to the Hawthorn bridge the ground rises sharply. In the years when Richmond was an outpost of Melbourne settlement and was rapidly gaining notice as an eminently desirable area for country residences, this high ground was heavily wooded and the slopes to the charming river below were well grassed. The river was the bar to this attractive high land. John Gardiner, overlander, became one of its first settlers, and by finding and using the crossing near Dight's Falls, he opened up a fairly convenient way to those who had looked eagerly upon the pastures of Boroondarra –



JOHN GARDINER

the "Shady Place" of the aborigines – and who desired their use for stock. Cardiner's station extended over the whole of the area, ranging wide as far as Prahran. Soon, Gardiner passed on to Mooroolbark. Thomas Henry Power, whose name is written large in the turf history of Victoria, established on the banks of the river a depot where he pastured stock whilst awaiting a favourable market in Melbourne, and nearby he had a boiling-down plant. One Connell, an ex-British soldier, grazed sheep on what is Hawthorn proper, and portion of the huge run of Messrs. Walpole and Gogg, which extended to the Botanical Gardens, was located there from 1840 to 1844, whilst from Toorak to Burwood (then Ballyshanassy) ran the station of one Glass. From 1845 to 1851 David Balfour grazed stock and did some cultivation on this station.

There was little permanent settlement in Hawthorn before 1850, although the first land sales were held in 1843. Power had a house on the banks of the river near Hawthorn Creek (the old main drain), and near the junction of Glenferrie and Oxley roads one Treacy conducted a small brickyard. Further on towards Kew, John L. Pinnock had a house, and nearby was the home of Henry Creswick. Near Grace Park was Michael Lynch, a Melbourne publican, on a farm, and David Meaney, another hotelkeeper, had a house on Barker's-road (then Barker's Track). Most of the residents who could be called permanent (and they were not above fifty in number), were small farmers, for the most part cultivating vegetables, and wood cutters. In the late forties the wood was floated down the river to the falls, where it was cut up.

The most noted of Hawthorn's early residents, and one of its first benefactors, was Dr. James Palmer. In 1843, whilst living at Richmond, Palmer placed a punt on the river near where is the bridge. It was a large flat-bottomed square boat, with overhanging

ends to project on to the banks. On one side there was a wheel, round which was passed a chain, which was fastened to stumps on each side of the river. For many years this craft was piloted by a local identity known as "Scotch Jack", who was also its sole motive power. This punt operated on the river until 1854, when the first Hawthorn bridge was opened, a wooden structure with a toll gate on the Richmond end. The only time the punt was out of action was when it was wrecked in the floods of 1849. The following year the first efforts towards building a bridge were begun, attempts being made to float a company with 200 shares of £100 each. There were few takers, and the project fell through.

Hawthorn was planned by Robert Hoddle from Elgar's special survey. Elgar, a West Indian merchant, probably took up this survey of 6000 acres as a speculation. His first resident agent was Captain Kane, and later Arundell Wrighte, who for many years was a well-known resident of Box Hill, where he died in 1887. The land offered at the first sale in December 1843 included the site of the Hawthorn railway station and St. James's Park, and part of the north side of Church-street. Eighteen lots were offered at £3 and £4 an acre, but only four lots were sold. A few months later land within the boundaries of Glenferrie-road west and Auburn-road east, extending from Riversdale-road to Gardiner's Creek, was offered at £3 an acre, but the reserve being considered too high no bids were received.

Nothing more was done with Hawthorn land until January, 1845, when at lower reserves much better business was done. Lots ranged from 15 to 62 acres. Viewed from present-day standards the prices realised are almost incredible. For 53 acres 28/- an acre was realised. Dr. Palmer paid 160/- an acre for 17 acres, covering about half of St. James's Park. Five years later 190/- an acre was paid for 30 acres, which included the site of the town hall in Burwood-road, and extended from

Chenferrie-road to Auburn-road! Then the gold fever consumed Victoria, and prices leaped to the other extreme. In 1852 land in Burwood-road from Barton-street to Yarra-street was offered at the upset price of £4 an acre, and sold from £75 to £205 an acre in two and three acre lots. A year later larger lots outside the town boundaries sold from £19 to £75 an acre.

When the first bout of speculative fever subsided Hawthorn settled down to work out its destiny. It included in its boundaries many fine homes in the fifties. Prominently was "Burwood", the home of Dr. Palmer, who became Victoria's first Speaker and who was knighted. Louisa Meredith wrote in her book "over the straits" that Hawthorn in the late fifties was a "very pretty village", and that Palmer's home was "the most charming cottage residence" she saw in Victoria, its "great and unfortunately too peculiar charm" being "the excellent taste with which the grand old native trees around have been preserved". George Coppin became the squire of this property when Palmer died. He subdivided it as one of his many speculations, considerably curtailing the original area of 33 acres, and here (renaming it "Invergowrie") Sir William McPherson lived until his death a few years ago. The McPherson family have given the house and grounds for use as a domestic arts centre and a hostel.

Amongst other of the early notabilities of Hawthorn were Hugh Culling Eardley Childers (nicknamed Hugh Curly-Headed Childers), who was Victoria's first Auditor-General. Returning to England, he became First Lord of the Admiralty, and later Secretary of War and Chancellor of the Exchequer. Childers lived in "The Hawthorns", in Creswick-street, which was built by John D. Pinnock, and for many years was the residence of Henry Creswick. At Auburn, in Auburn House, lived Charles Gavan Duffy. This home was purchased for him from Rev. W. H. J. Liddiard, a large land holder of the early days, by his admirers in order to qualify him for a seat in the Legislative Assembly, and just over the border of Hawthorn, on Burke-road, lived John O'Shanassy. Michael Lynch has been mentioned. This eccentric, wealthy Irishman owned Grace Park. He gave the land on which was built in the sixties the Church of the Immaculate Conception.

In 1856 the Boroondarra Roads Board was gazetted. Its first offices were in burwood-road, just above Power-street. For a long time in later years this structure was a Chinese laundry. In its first year this board received £4300

in revenue, mostly from Bridge tolls. In addition it borrowed, on the personal security of its members, £247/10/- from the Bank of New South Wales, and from the sale of wood collected £13 /10/- Its expenditure amounted to £4850. It had power to levy a rate of 6d. in the pound on house property, and cultivated land, and 0 d. on uncultivated land (later increased to d.). The board functioned for about four years, and laid well the foundations of the fine road system of modern Hawthorn. Its first chairman was Henry Sellars, and its operations covered the areas of Hawthorn, Kew and Burwood. In 1860 an agitation for local government was active, and in July of that year the borough of Hawthorn was constituted. "Out of the shadow into the sunshine" is the motto of Hawthorn, and the sixties were certainly a golden period for the suburb. Its population grew rapidly; industries sprang up, including tanneries, along the bed of the creek, but they never grew to any great proportions. In this period, too, there were many changes in street nomenclature, and settlement began to assume definitely that of a residential suburb. Beehive-road became Barker's-road; Main-road became Burwood-road. Efforts were also made to minimise flooding in low-lying parts of the area near the river. By 1870 Hawthorn had become an important suburb, and in August of that year the town hall was opened. This was followed a few years later by the present town hall, which has recently been renovated and improved. Of this period a chronicler said: "By the year 1870 Hawthorn had obtained more than a good start on the road to prosperity, and it was only a question of time for the population to grow and cover the whole district. The inhabitants had attained the greatest of all boons - self-government. The main thoroughfares, at least, were all well made, and many of the side streets had had considerable sums of money spent on them. Well-built bridges over the Yarra and Gardiners Creek gave access to Melbourne on the west and to

Prahran on the south, while the roads on the east were fast opening up the agricultural and pastoral country of the Upper Yarra".

The seventies saw a great boom in subdivision. Along the river front, too, there was a great development in market gardening, a great number of the farmers being Germans. This boom in land subdivision and house building continued until the end of the eighties, when the great crash came, affecting all Victoria. In 1888 one of the most spectacular subdivisions of the boom took place in Hawthorn. In that year, so frenzied was the land speculation, business sites Burwood-road sold at £100 a foot. At that time Judge Molesworth owned a large property fronting Burwood and Auburn roads. His garden was famous for its beauty and its fruit trees. A syndicate sought to buy it, and at length the Judge consented to sell at £60 a foot, stipulating that cash should be paid. The syndicate agreed, and on 17th August, 1888, paid £22,365 to the Judge in his chambers. Men worked all that night by torchlight, and next morning the residents of Hawthorn awoke to find the fences down, the land subdivided into blocks, and hoardings erected announcing the auction of these allotments the following week. There were 2000 people at the sale, and the lots were auctioned with a golden hammer by Mr. P. L. Fint. The first lot offered, with a 40-foot frontage and 140-foot depth, sold at £180 a foot, and at the close of the sale only two blocks remained unsold, and the proceeds totalled £30,000. Most of the sales were on terms, and the bursting of the boom caused many people to cancel their contracts, with the eventual result that the syndicate lost heavily on the deal.

After the recovery Hawthorn's progress, in keeping with the rest of the State, was more ordered and steadier. Today, well populated, it stands high in the reputation of Melbourne's suburbs, a prosperous district, holding prosperous homes.



PALMER'S PUNT OVER THE YARRA AT RICHMOND

FREE LOCAL CLASSIFIEDS

Email advertise@burwoodbulletin.org or phone 0413 412 844.

Line Ads – FREE Includes business name, address, phone number. GST incl.

Online Exposure for Directory Listings – All current Directory listings appear on our website on the 'Our Advertisers' page: burwoodbulletin.org/our-advertisers

Each listing includes business address details, and either 3-4 or 1-2 lines of descriptive text.

Accounting & Taxation

G H O'Brien & Assoc.
4 Burwood Hwy Burwood 0417 373 605

Tax on Trak
rear 1423 Toorak Rd Burwood 9889 6680

VHL Business & Tax Solutions
611 Camberwell Rd, Camberwell 98120607

Aged Care

Acquaint Premium Private Home Care
489 Toorak Rd. Toorak 9267 9090

BASScare www.basscare.com.au
131 Maling Rd Canterbury

Goodwin Close Retirement Village
2A St James Ct, Blackburn Sth 1800 550 550

Samarinda Aged Care
286 High Street, Ashburton 1300 591 464

Architectural & Interior Design

Fine Designs Engineering
262 High Street, Ashburton 9886 9544

Arts & Entertainment

Gilbert & Sullivan Opera Victoria
Ticketing/details sgov.org.au

Box Hill Ballet Association
1015A Whitehorse Rd Box Hill 0407 524 278

Automotive Service & Repair

Auto Plus, Burwood
36 Burwood Hwy 9808 8511

Burwood Automotive & Exhaust
21 Duffy Street Burwood 9888 7000

Kryton Automotive
3 Alexander Dr Burwood 9888 8797

Beauty Treatments

Youthful Eternal Skin
7 Hartley Rd Blackburn Sth 0403 089 119

Community

Burwood Neighbourhood House
1 Church Street 9808 6292

Craig Family Centre
7 Samarinda Ave, Ashburton 9885 7789

Power Neighbourhood House
54 Power Ave., Ashwood 8849 9707

Computers

Stev-Computer
71 Morack Rd Vermont 0417 338 704

Dental

Azubel Dental
1341 Toorak Rd Burwood 9809 1768

Dr Bob Cvetkovic
681 Burke Rd Camberwell 9882 3366

Glen Iris Dental
2 Hyslop Street, Glen Iris 9809 2555

Proslab Dental
L1/313 Canterbury Rd, Canterbury 88090500

Electrician

Nicholas Theodorakis
20 Allambee Ave, Camberwell 0418 356 268

Food

Greenhart Wine Bar
1226 Toorak Rd, Camberwell w: greenhart.com.au

Le Croissant
1204 Toorak Rd, Camberwell 9809 2263

Food Safety

The Gourmet Guardian Pty Ltd
2/1210 Toorak Rd, Camberwell 0422 922 883

Glass Pool Fencing

A.J. Snowball Pty Ltd
17 Belmont Ave, Glen Waverley 0400 799 920

Government

David Davis MP 9827 6655
e: david.davis@parliament.vic.gov.au

Matt Fregon MP 0448 206 688
1/40 Montclair Ave, Glen Waverley

Hairdressing

D'Alton Hairdressing
1423 Toorak Rd Burwood 9889 5152

Ennovy Hair
39 Burwood Highway, Burwood 9808 8218

Health

healthAbility Ph. 9430 9157
43 Carrington Rd, Box Hill

Home

Betta Home Living
1110 Toorak Rd, Camberwell 9809 2222

Camberwell Bathrooms
1202 Toorak Rd, Camberwell 9889 0005

Home Maintenance

Anthony Di Nunzio Joinery 0409 190 282

Garry Hickey Landscaping 0411 860 785

Man Around the House 0407 477 740

Pebble Mix
84 Highbury Road, Burwood 9888 9888

Homeopathic/Naturopathic Services

Anthony J Von Moger B.Hlth Sc.
20 Trent St, Glen Iris 9889 9835

Lawnmower/Garden Machinery

Burwood Hwy Mowers
33 Burwood Hwy Burwood 9808 5370

Legal

Accord Family Law
624 Camberwell Rd, Camb'Il 0429 062 679

Frank Bertucci
1379 Toorak Road, Burwood 9889 0061

Oates Rennick and Assoc.
4 Burwood Highway, Burwood 9808 6922

Medical

Ashburton Natural Clinic
281A High St Ashburton 0402 945 552

Camberwell East Medical Centre
236 Warrigal Road Camberwell 9889 8000

Medical - Alternative

Northeast Wellness - Myotherapy
1160 Toorak Rd Camberwell

REVIVE Ayurveda
1160 Toorak Rd Camberwell 0449 884 410

Moving Services

Professional Packing & Unpacking Services
Efi 0414 772 851 or Leanne 0425 799 786

Music Tuition

Music Logic Box Hill Studio 0412 174 093
Unit 2, 3 Peace St, Box Hill Sth

Occupational Therapy

Early Start 9889 9010
e: camberwell@earlystartaustralia.com.au

Office Furniture New & Used

Adco Office Furniture
119 Burwood Hwy Burwood 9808 4404

Op Shops

Lions Op Shop
1350C Toorak Rd, Camberwell 9809 4950

Rotary Club Box Hill Burwood Op Shop
113 Canterbury Rd, Blackburn 0451 200 237

Pet Care Services

Pawsitive Dogwalks, Burwood
pawsitivedogwalks.com.au/ 0406 002 870

Photography/Framing

Shot, Framed & Hung
250 Warrigal Rd Burwood 9808 9827

Creative Framing
115 Highbury Rd Burwood 9888 8225

Real Estate

HAIM Real Estate
627 Camberwell Rd Camberwell 9813 3133

J A Cain Real Estate
1156 Toorak Rd Camberwell 9805 2900

Shopping

Burwood Village
Toorak Road, Camberwell

Hartwell Shopping Centre
Toorak Road/Camberwell Rd, Camberwell

Strength Training

Better With Sarah
1118 Toorak Rd betterwithsarah.com.au

Travel

East Burwood Travel & Cruise 9808 1177
Cnr Burwood Hwy/Middleborough Rd

Weddings

GWM Weddings
1387 Toorak Rd Camberwell 9191 7838

CLASSIFIED BLOCK ADVERTISEMENTS

Box Ads (up to six lines) – \$55 per issue. GST inclusive.

Email advertise@burwoodbulletin.org or phone 0413 412 844.

FOOD SAFETY SPECIALISTS

The Gourmet Guardian Pty Ltd
Unit 2 1210 Toorak Road, Camberwell
Ph. 1800 FOOD SAFETY (1800 366 372)
Mb. 0422 922 883
e: admin@GourmetGuardian.com.au
www.AustralianFoodSafety.com.au

HEARING CLINIC

Alpha Hearing
Independent audiologists &
hearing aid specialists
294 Stephenson's Road, Mt Waverley
1 Whitehorse Road, Balwyn
Ph. 9807 3007 w: alphahearing.com.au

HOME IMPROVEMENTS

Pebble-Mix
45 years an Aussie favourite. Improves
Patios, Porches, Stairs, Pathways
& Pool Surrounds. Obligation-free
quotes. Ph. 9888 9888
84 Highbury Rd, Burwood.

HOME MAINTENANCE

Man Around the House
Carpentry repairs, fences, fascias, decks,
pergolas, lattice, weatherboards, etc.
Free quotes. Ph. Martyn 0407 477 740
martyn@manaroundthehouse.com.au

LANDSCAPING

Garry Hickey Landscaping
35 Years Experience.
All aspects of landscaping including
paving, retaining walls, instant and
artificial lawns.
Ph. Garry Hickey on 0411 860 785

SOLICITORS

Frank Bertucci
1379 Toorak Road, Burwood 3125
Ph. 9889 0061/68
Fax: 9889 0407

SOLICITORS

Oates Rennick & Associates
4 Burwood Hwy, Burwood
Ph. 9808 6922
Fax 9808 2243
e: admin@oatesrennick.com.au

SUPPORT
our local
businesses

Can you help?

We need someone who is interested in volunteering with us as Editor or Assistant Editor.

Familiarity with Microsoft Office, or similar, is necessary; as well as understanding of, and/or experience in the sphere of editing.

Although you will be working from home, we will be able to provide any support you need in taking on the position.

Call Chris on 0413 412 844 or email editor@burwoodbulletin.org



Classified ads are now FREE to all businesses that wish to participate. This is our way of helping people to be aware of the many ways of obtaining goods and services LOCALLY. All paid advertisers will be listed additionally in the classifieds (as well as online) to maximise impact.



On the farm with Yoshi

Blackberry



ONE of the best things about summer is not just the wonderful weather, but also seeing trees and bushes abundant with fruit.

One of my favourites is the blackberry – even though I know it’s considered a serious environmental and agricultural threat because of its rapid growth and spread. This highly invasive plant can establish itself rapidly in bushland, forest plantations and along streams, altering water flow. It can quickly displace native species, leading to complete dominance and loss of biodiversity.

In Queensland it’s considered a category 3 restricted invasive plant under the Biosecurity Act of 2014. It must not be given away, sold or released into the environment.

It’s a concern across Victoria also and the Victorian Blackberry Taskforce was established in 2001, “to work with communities and government agencies to provide a

collaborative effort to control blackberry”.

Considering the above and more, I consciously control my small patch of blackberry, ensuring it doesn’t encroach into other areas of my property.

Although it’s regarded as a weed, blackberries are considered a superfood offering many health benefits. These berries are said to be an excellent source of vitamins C and K and manganese. It is said to improve digestion and blood sugar levels, reduce inflammation, prevent cardiovascular disease, protect and improve brain function and even help prevent cancer.

Yes, this weed has copped a bad name. But when I meander along my farm and stumble across the blackberry patch heavy with that gorgeous, ripe fruit, I can hardly stop myself from greedily devouring those juicy berries.

YOSHANTHI WELLAWA

The Indefinite Article

“A” European or “An” European?



LOTS of people get this wrong because of a commonly quoted, but incorrect, rule. And that rule is: if the next word begins with a consonant, use “a”; if the next word begins with a vowel, use “an”.

This is wrong – it’s close, but it’s wrong!

The *actual* rule is: if the next word begins with a consonant **SOUND**, use “a”; if the next word begins with a vowel **SOUND**, use “an”.

Most of the time it’s pretty obvious: a cat, a dog, an apple, an orange . . . but sometimes you really have to listen out for that initial sound. So “European” starts with a “Y” sound – a consonant sound.

The letter “H” sometimes trips people up, because back in the 18th century it was barely pronounced, so people would say “an historic” or “an habitual” – and some style guides still cling on to that today. But spoken language has evolved – now the “H” is pronounced more prominently, becoming more consonantal, hence “A hotel”, not “AN hotel”.

Now, isn’t that an useful thing to know?

Health in Surrey Hills

THE pharmacy was operating as well as it could amidst the trappings of construction when I turned up to speak to the business owner Anna Theophilos. And I wanted to know what was behind it all.

Anna mentioned the fact that the government's recently-implemented 60-day dispensing policy had caused considerable unease for the industry (of course, this halves the dispensing fee income from the previous 30-day prescription service on many medications). This presented a challenge to the way forward.

"Community pharmacy is all about supporting the community", she said. "When I purchased the pharmacy last year in May, it was with a dream of building a local business that contributed to the wellbeing of lives in a genuine and positive manner. In the end we decided, instead of reducing staff and rationalising costs, to pivot with the change and focus on how to best develop and support our local community".

The plan involved expanding the scope of the practice. Partnering with Terry White/Chemmart enabled Anna to benefit from competitive pricing and to draw on an infrastructure of care clinic and other services.

"We're putting in a clinical room at the back and developing a community health hub for customers – especially as doctors are getting harder to get into. We will be able to do cholesterol, diabetes, all meds testing, plus immunisations, as well as hearing clinics – indeed, a lot of checks prior to visiting the doctor".



The result of the renovation is a fresh, clean, updated space that includes double the retail space, the consultation room and a custom-designed dispensary. "And," said Anna, "It's a small thing, but lots of people come for walks with their dogs, so we've changed our flooring (previously carpet) so they can bring their dogs in when they visit".

All the changes that I saw being prepared when I spoke to Anna will have been finalised when you read this – and the local community is now the winner!

CHRIS GRAY

WORTH KNOWING.

"GOLDEN SPECIFIC"

The celebrated and only safe, sure and speedy **ANTIDOTE TO DRINK.**

The **SYSTEM** ONCE IMPREGNATED BY THIS REMEDY THE **USE OF ALCOHOL MUST CEASE.**

THOUSANDS PROVE IT.

The "Golden Specific" neutralises the effect of alcohol and promptly corrects and stays its use. It supplies the place of the accustomed liquor and prevents that absolute physical and mental prostration which so frequently follows the sudden discontinuance of stimulating drinks. Prepared in both **powder** and **liquid** form according to the formula of Dr. Haines. **Hundreds in the colonies have the "Golden Specific" in use** and testify to its complete efficacy and success. Read the scores of Testimonials received by us daily from all parts.

TO THE DIPSO MANIAC.

The "Golden Specific" is a positive and certain antidote to drink and **cures the worst cases.**

TAKE IT IN TIME. SEND FOR OUR BOOK.

"The fame, like gold, the more 'tis tried, The more shall its intrinsic worth proclaim!"

SCIENTIA OMNIA VINCIT

ANTI DRINK

ALCOHOL

THE DEMON DRINK.

WORLD WIDE.

The acknowledged cure for

DRUNKENNESS

or the liquor habit, inebriety and alcoholism (in any form). Can be given secretly or otherwise. Placed in a Cup of Tea or Coffee, or in food, its presence cannot be noticed. Warranted perfectly harmless and easy to administer. It operates so quietly and with such certainty that the patient undergoes no inconvenience, and ere he is aware his complete reform is effected. **An overdose is harmless and it does not impair or injure the health in any way.**

DRUNKENNESS IS A DISEASE.

Write for book of particulars and colonial testimonials, sent free on receipt of stamp. *Druggists & Apothecaries, We have no Agents.*

Sole Vendors and Proprietors, and our only Address

GOLDEN SPECIFIC CO.,
145 and 147 COLLINS STREET,
MELBOURNE, VIC.



PICTURES: (Above) Men looking for work, 1930; (Below) During the Great Depression the Forests Commission undertook a large unemployment program. By 1935-36 almost 9000 men, or *susso's*, were employed doing firebreak slashing, silvicultural thinning, weed spraying, firewood cutting and rabbit control. Photo: Rheola/Bealiba in Central Victoria.



THE SUSTENANCE PAYMENT

We're on the Susso now,
We can't afford a cow,
We live in a tent,
We pay no rent,
We're on the Susso now.

Children's poem of the 1930s.

THE “Susso” is an Australian slang term originating in the Great Depression and referring to welfare payments.

The Great Depression (1929–1932) hit Australia hard. The Wall Street crash in October 1929 signalled a worldwide depression; but conditions in Australia had begun to deteriorate well before this.

Australia had borrowed overseas money and, as prices for wheat and wool (Australia's two main exports) began to fall, the government found it was unable to repay the loans.

Australian banks also cut back on lending and unemployment began to spiral. As more and more people lost their jobs and could not borrow money, paying for goods and services became impossible. In turn, fewer people were paying taxes, leading to a drop in income for the government. Government jobs were lost as a result and the cycle of depression and economic hardship continued.

At the height of the depression, 28% of workers were unemployed. Many people lost their houses and were forced to live in makeshift dwellings in shanty towns. The government introduced welfare payments for people who had nowhere else to turn. Being unemployed was seen as very shameful and depending on the “Susso” very degrading.

By 1932, 60,000 men, women and children depended on the Susso for food, which allowed them to buy it in only small amounts. Sometimes men had to work in order to receive the payment and the work was only given to the long-term unemployed. Women were not eligible for payment due to the assumption that they had a male breadwinner at home to support them.

Payment was given in the form of coupons, along with bread and potatoes. Hunger was commonplace and people often existed on bread and dripping (lard or fat), or bread with a little milk and sugar. Worn out boots and shoes were repaired by inserting layers of cardboard inside the soles.

It was not until WWII that the Australian economy would recover.

ROSALIE WHALEN

Fake Food



FOOD “replacement” technology began as science fiction as early as the late 19th century, and continued thus until it became the stuff of cliché. But entertainment was not the motivating idea: this tiny, white vision of the future had its roots in feminism.

In the lead up to the 1893 World’s Fair in Chicago, the American Press Association asked writers from a number of fields to promote the event by writing essays on what they thought the world of 1993 might look like. Suffragette Mary Elizabeth Lease predicted that by 1993, humans would only eat synthetic food, liberating women from the drudgery of the kitchen. People would “take, in condensed form from the rich loam of the earth, the life force or germs now found in the heart of the corn, in the kernel of wheat, and in the luscious

juices of the fruits. A small phial of this life from the fertile bosom of Mother Earth will furnish men with substance for days. And thus, the problems of cooks and cooking will be solved”.

As with so many visions of the future, however, the meal-in-a-pill turned from an object of fascination to one of ridicule. In the 60s and 70s, cartoon series like *The Jetsons* and films like *Sleeper* poured cold water on the idea, lampooning the dreamers of yesterday.

However, of course, there has always been an element of truth in the idea of food being adapted to differing purposes (witness the Space Race imperative); and we found the article below in the *Doncaster Reporter* of 22 June 1934 that puts in words the “state of play” on the subject as it was at the time.

NEW FOOD DISCOVERY.

The Idea of taking a pill and calling it a meal approaches reality with the announcement of successful medical treatment with a highly nutritive substance derived, after five years’ experiment, from the common cotton seed by Professor Kaspar Schmitt, of Heidelberg, in Germany (writes the German correspondent of the “Observer”).

The substance, obtained by a process of extraction and evaporation, resembles yellowish flour and contains, as does no other known product, the vitamins A, B, C, and E altogether. The vitamin D, according to one analyst’s report, may be activated readily.

Containing 50 per cent albumen and the extremely high mineral content of 7.5 per cent, the cotton seed extract has been fed to hospital patients with results indicating a new method of enriching human nourishment that may revolutionise dietetics. The pulverised cotton seed extract may be added to every conceivable food, increasing the nutritive value 20 to 30 per cent. Two of the cotton seed tablets a day, according to Professor Schmitt, suffice for three meals a day, and there is a likelihood of the cotton seed pill becoming the “iron ration” of the future for soldiers, explorers, ocean flyers, and also for civilians in times of food shortage.



Christmas service times

Christmas Eve – Sunday; Christmas Day – Monday; New Year's Day – Monday

Ashburton Uniting

3 Ashburn Grove

Sun 17 Dec 10am service; 5pm Community

BBQ, 6.30pm Community Carols feat.

Canterbury Tongan Men's Choir

Sun 24 Dec 10am Christmas service

Sun 24 Dec 11:30pm Midnight service

Mon 25 Dec 9:30am Christmas Day service.

Camberwell Baptist

460 Riversdale Rd Hawthorn East (cnr

Riversdale Rd & Wills St)

Sun 3 Dec 10am Living Nativity Service;

10:45am Explore Christmas family activities;

11:30am Lunch

Sun 17 Dec NO morning service;

5:30pm BBQ; 7pm Community Carols.

Sun 24 Dec 10am Service; 11:30am

Community Lunch (RSVP's essential: email

office@camberwellbaptist.org)

Mon 25 Dec 9:30am Christmas Day Service.

Camberwell South Anglican Church

103 Bowen St. e: david@csac.org.au

Sun 17 Dec 10am Christmas Family Service

w/ free gingerbread decorating activity

Sun 24 Dec 10am Christmas Eve Service

Mon 25 Dec 10am Christmas Day Service w/

Holy Communion.

Glen Iris Road Uniting Church

200 Glen Iris Rd

Sun 3 Dec 10am Empty Christmas Tree service – for

Camcare

Sun 10 Dec 10am Second Sunday of Advent; 7.30pm

Blue Christmas

Sun 17 Dec 10am Third Sunday of Advent; 4pm Messy

Church Christmas

Sun 24 Dec 10am Carol service

Mon 25 Dec 9:30am Christmas Day service.

Holy Trinity, Surrey Hills

Cnr Union Rd & Montrose St.

Sun 10 Dec. 7pm Service of Lessons & Carols

Sun 24 Dec 5:30pm Family Christmas service with

Carols; 11:30pm Midnight Mass with Carols (Carol

singing from 11.00pm)

Mon 25 Dec 9:30am Christmas Eucharist & Carols.

St Benedict's Catholic Community

299 Warrigal Rd, Burwood w: stbenedicts.com.au

Sun 24 Dec 5:30pm Christmas Eve Mass starting with

Carols

Sun 24 Dec Midnight Mass with Carols starting 11:30pm

Mon 25 Dec 10am Christmas Day Mass.

St Clare Church

138 Woodhouse Gve, Box Hill Nth

Sun 24 Dec, 8:30pm; 9pm Carols

Mon 25 Dec, 9am Christmas Day Mass

Mon 25 Dec, 11am Italian Mass.

Details: www.scsfx.org.au

Find your copy of The Bulletin

Alamein Alamein Learning Centre, 49 Ashburn Gr.

Ashburton Craig Family Centre, 7 Samarinda Ave;
Hi-Clean Dry Cleaners, 409 High St.; J.J. Sushi,
279 High St.; Library foyer, 154 High St.; Ashburton
Community Centre, 160 High St.; Ashburton Railway
Station, Welfare Parade.

Ashwood Ashwood Newsagency, 503 Warrigal
Rd.; Banger Burger, 499 Warrigal Rd.; Power
N'hood House, 54 Power Ave.; Hi-Clean Dry
Cleaners, 409 High St.

Balwyn Balwyn Library, 336 Whitehorse Road;
Balwyn Community Centre, 412 Whitehorse Road,
Surrey Hills.

Bennettswood Bennettswood N'hood House, 7
Greenwood St.; Bennettswood PO, 79 Station St,
Burwood.

Blackburn Koonung Neighbourhood House, 109
Koonung Rd, Blackburn Nth; Library, Blackburn Rd.

Blackburn Sth Charlotte's Corner, Cnr Canterbury
Rd & Charlotte St; The Avenue N'hood House @
Eley, 87 Eley Rd.; King Chooks, 9/96 Canterbury Rd.;
Sweet Blends Café, 191A Middleborough Rd.

Box Hill Whitehorse Service Centre, 1028
Whitehorse Rd*; Library, 1040 Whitehorse
Rd.; Whitehorse Community Health Cntr, 43
Carrington Rd.

Box Hill Sth Box Hill South Family Centre, Rotary
Crt.; Box Hill South N'hood House, 47 Kitchener St.

Burwood Burwood Café, 11 Faelon St.; Burwood
Newsagency, 1394 Toorak Rd.; Burwood
Neighbourhood House, 1 Church St; Boroondara
Lions Op Shop, 1350C Toorak Rd; Burwood Health
Centre, 400 Burwood Hwy; Camberwell East
Medical Centre, 236 Warrigal Rd; Pebble-Mix, 84
Highbury Rd.

St. Dunstan's Anglican Church, Camberwell

163 Wattle Valley Rd

Sat 2 Dec 7pm Lessons and Carols

Sun 24 Dec 5pm Children's Christmas Carols

Sun 24 Dec 11pm Christmas Eve Midnight Mass

Mon 25 Dec 9am Christmas Day Holy Eucharist.

St Faith's, Burwood

6-8 Charles St., Glen Iris

Sun 17 Dec, 5pm Carols @ St. Faith's with festive refreshments

Sun 24 Dec, 11pm, Choral Eucharist

Mon 25 Dec, 9.30am, Choral Eucharist.

Details: www.stfaiths.org

St Francis Xavier Church

Cnr Whitehorse & Dorking rds, Box Hill

Sun 24 Dec, 4pm, Seniors' Mass

Sun 24 Dec, 6pm, Family Mass

Sun 24 Dec, 11:30pm, Midnight Mass

Mon 25 Dec, 10:15am & 5:30pm Christmas Day Mass.

Details: www.scsfx.org.au

St Oswald's Anglican Church, Glen Iris

100 High Street

Sun 17 Dec 7:30pm Choir & Christmas Carols

Sun 24 Dec 4pm Children's Christmas Service

Sun 24 Dec 7:30pm Christmas Eve Service

Mon 25 Dec 10am Christmas Day Service.

Details: www.stoswaldsgleniris.net.au

St Peter's Anglican

1030 Whitehorse Rd, Box Hill

www.anglicansboxhill.org.au

Sun 17 Dec 7:30pm Carol Service

Sun 24 Dec Christmas Eve services: 11.30am (Mandarin); 10.30pm

Mon 25 Dec 9:30am Christmas Day Service.

St Scholastica's Parish

348 Burwood Hwy, Bennettswood

w: stscholasticaparish.com.au

Sun 24 Dec 5pm Nativity Play

Sun 24 Dec 5:30pm Family Mass

Sun 24 Dec 9pm Christmas Vigil Mass

Mon 25 Dec 10am Christmas Day Mass.

St Thomas, Burwood

44 Station St.

(services are in English, unless otherwise indicated)

Sun 10 Dec 3:30pm Christmas Carnival & Carols in the Courtyard. Games, food, jumping castle, sausage sizzle!

Sun 17 Dec 10:30am Yarra Gospel Choir at St Tom's

Sun 24 Dec 8:15am Holy Communion Service

Sun 24 Dec 10:30am Combined Chinese (Cantonese/Mandarin) Service

Sun 24 Dec 6pm Kids' Christmas Eve Service: children participation & carols!

Sun 24 Dec 11pm Midnight Christmas Eve Service

Mon 25 Dec 9am Christmas Day Service

Mon 25 Dec 10:30am Combined Chinese Christmas Day Service.

The Salvation Army, Camberwell

7-11 Bowen St. Ph. 9518 2100

Sun 17 Dec 5pm Stroll to the Star: Outdoor interactive telling of the Christmas Story by young people of Camberwell Salvos

Sun 17 Dec 6pm Carol Service

Mon 25 Dec 10am Christmas Day Service.

Wattle Park Chapel

234 Elgar Rd, Box Hill South

Sun 17 Dec Christmas BBQ and Carol Service starting at 5pm for BBQ and then followed by carol service. All welcome.

See page 54 for other Christmas events

Burwood East Burwood Brickworks, 70 Middleborough Rd; Burwood One Ferguson Plarre, 172-210 Burwood Hwy; East Burwood Travel, 6/2 Burwood Hwy; Sofia's Restaurant, 299 Burwood Hwy; Burwood Heights Uniting Church, 347 Blackburn Rd.; Spizzico Café & RSPCA Op Shop, Burwood Heights Shopping Centre; Woolworths, East Burwood, 42 Burwood Hwy.

Camberwell Bowen Street Community Centre, 102 Bowen St; Garvey Real Estate, 195 Through Rd; Library, 340 Camberwell Rd.

Canterbury Canterbury N'hood Centre, 2 Kendall St.; BASSCare, 2 Rochester Rd.

Chadstone Amaroo N'hood Centre, 34 Amaroo St.

Forest Hill Whitehorse Service Centre, Forest Hill Chase*; John Mullahy MP, 2 Brentford Square; Uniting Op Shop, 333A Canterbury Rd.; YES Op Shop, 53 Mahoneys Rd. Forest Hill Police Station, 469 Springvale Rd.

Glen Iris Uniting Church, Hyslop St; Hawthorn U3A, 26 Sinclair Ave.; St Faith's Anglican Church, 4 Charles St.

Hartwell Hartwell P.O., 1166 Toorak Rd; Fordham Ave Milk Bar, 116 Fordham Ave.

Hawthorn Library, 584 Glenferrie Rd.;

Kew Library.

Malvern East Phoenix Park N'hood House & Phoenix Park Library, 22 Rob Roy Rd.

Mont Albert The Boulevard, 369 Mont Albert Road; Mont Albert Post Office, 1a Hamilton St.; Mont Albert Florist 1 Hamilton Street, Mont Albert.

Surrey Hills Surrey Hills N'hood Centre, 157 Union Rd.

Vermont Stev-Computer, 71 Morack Rd.; Vermont South Library, Pavey Place.

Wattle Park Rotary Recycle Op Shop, 1113 Riversdale Rd.

**Note changed hours: Now open Tuesday – Friday 9am to 1pm.*



OCCASIONALLY you may find that you are not coping – you may be feeling isolated, unsure of what you are doing, feeling stressed or you just need some support. If you live in the City of Boroondara, The Boroondara Family Network can offer parenting support in your home in many different situations:

- Families who are new to Melbourne,
- Mums with limited or no family support,
- Mums who have had multiple births,
- Mums suffering from postnatal Stress and postnatal Depression,

- Mums who feel alone and/or isolated,
- Mums who are in need of emotional support, and
- Mums who do not feel confident in their parenting role.

After a referral, the Coordinator will visit you in your home and explain a bit more about the Boroondara Family Network.

The Coordinator will then assign a Volunteer who will visit each week. The Volunteer will give you practical and emotional support.

Volunteers Needed

We are seeking generous and compassionate women, who find great satisfaction from helping families through difficult times.



ROLE OF A VOLUNTEER:

- Visit mum 2-3 hours once a week.
- Be an extra pair of hands i.e., holding baby or keeping toddler occupied.
- Provide companionship to mum. Someone to talk to, adult conversation.
- Provide practical advice especially to 1st-time mums.
- Listening in an open non-judgemental way.
- May even assist mum in getting out of the home for outings.

REQUIREMENTS TO BE A VOLUNTEER:

- Parenting experience with young and infant children is a must.
- Participation in the BFN training program.
- Consenting to a Police Check.
- Consenting to a Working with Children Check.
- Providing two referees.

If you would like to volunteer and this is something that you would like to consider, please contact the BFN Coordinator on 0409 014 862 or email bfncoord@gmail.com



BURWOOD NEIGHBOURHOOD HOUSE

*So much under one roof!
Something for all!*

1 Church Street, Burwood 3125

Phone: **9808 6292**

35 years of being a vital community resource

Short Courses and Activities 2023

TERM 4

SOCIAL ACTIVITIES *Bookings essential!*



COMMUNITY BUS TRIPS

Monthly Bus trips to various destinations.
Book early – the bus fills quickly.



House Christmas Party Wed 6 Dec

12:30pm Bookings essential – 9808-6292

Lets all celebrate Christmas together by gathering here and partaking in a nice three-course meal. **Cost \$20**



New BINGO: Starting 14 Nov 11–12:30pm.

Cost \$4. Come along and meet new people while enjoying a game of Bingo. There are prizes too.

Booking Essential 9808-6292.

HEALTH & WELLBEING CLASSES

Yoga (<i>Hatha Style</i>)	Monday	9:05am – 10:05am
Meditation	Monday	10:15am – 11:15am
Social Walking	Wednesday	10:30am – 11:30am
Social Scrabble	Wednesday	10:00am – 1:00pm
Strength Training	Thursday	9:15am – 10:15am
Tai Chi	Thursday	10:30am – 11:30pm
Zumba	Friday	9:30am – 10:30am

Come to our free “Come and Try” sessions!

New Classes Bookings essential 9808-6292

- Cooking Classes
- Sewing
- Craft

SOCIAL CRAFT – CARD MAKING 4 December \$20

Do you want to make a personalised card for a loved one for Christmas? Come along and socialise while making a card for that special someone. Bookings essential: 9808-6292.

PLAYGROUP

New groups and individuals welcome.

Large room and backyard. Low-cost sessions am/pm. Lots of equipment, covered sandpit and cubby.

CHILDREN'S PARTIES – Playgroup yard is great for booking a children's party; lots of play equipment. We have a large room and kitchen available. Affordable.

We do “Come & Try” Sessions

OUR COMMUNITY PROJECT



KNITTED KNOCKERS - AUSTRALIA

“Communities Helping Women”

Like us on Facebook & Instagram

FREE 100% cotton prostheses available.

Volunteers urgently needed for Admin and data entry support.

COMPUTERS & I.T.

Seniors! Learn the clever things you can do with your computer, iPad, iPhone and Android Smartphone. You can also update your computer skills in Microsoft Word or Excel on your laptop or our computers.

• COMPUTERS FOR BEGINNERS Class

Learn all the basics to get you started using a computer. Individual sessions, work at your pace, book when required.

- INTRODUCTION TO WORD
- INTRO INTO EXCEL
- EBAY / GUMTREE WORKSHOP
- JOB SEEKERS – refresh your computer skills

URGENTLY REQUIRED: QUICKBOOK volunteer for data entry. Volunteers or retirees, share your skills. Retired volunteers to go on the Burwood Neighbourhood House Committee.

FOOD BANK We have pre-cooked frozen meals, located in our Freezer and we also have, out the front, non-perishable foods. Please call the office to pick up a frozen meal.
As there are more people suffering in the community, donations to the Foodbank/pantry are appreciated.

FROZEN TAKE AWAY FOOD available.

Donated by catering companies. Pick up Monday to Friday during Office Hours: 10:00am to 3:00pm.

WORK EXPERIENCE PLACEMENT

We support work experience for job seekers in admin and accounting. Work placement for Community Development Diploma.

VOLUNTEERS welcome in all aspects: admin, marketing, cleaning, gardening, handyman small maintenance. Foodbank assistance.

Office Hours 10am–3pm Monday–Friday (closed school holidays) Email burwoodn@bigpond.net.au
Check the office for any day or time changes. **Like us** on FACEBOOK & INSTAGRAM

Community Centres & Activities

Alamein N'hood & Learning

49 Ashburn Gr, Ashburton. Classes in Home Maintenance, EAL & literacy, Yoga, Pilates, Body Core Strength, iPads, Technology, Financial Wellbeing, Career/Employment, Volunteering. Men's Shed Tues AM & PM. Shopping Bus & seniors' excursions. e: admin@alameinnlc.com.au w: alameinnlc.com.au Ph. 9885 9401.

Amaroo Neighbourhood Centre

34 Amaroo St, Chadstone. Room Hire, ACV GARDS Metro Support Group for Asbestos, Art Therapy, Indian Dance, Board Games, Scrapbooking, Young Women's Arthritis Support, Seniors Strength, Circle for Natural Aid. Free Fruit, Veg & Bread, Haircuts, Comm. Lunch, Op Shop. Volunteers Welcome. Ph. 9807 2625 e: coordinator@amaroonc.org.au

Ashburton Community Centre

160 High St, Ashburton. Ph: 9885 7952 e: office@ashburtoncc.org.au Our Centre offers term-based classes, workshops, casual classes & social activities. Free trials available. Room hire for meetings & training. See our website for more details & to enrol online. w: ashburtoncc.org.au

Avenue N'hood House @ Eley

87 Eley Rd, Blackburn Sth. Activities & classes incl. exercise, crochet, mahjong, writing, yoga, computers, poetry, ukulele, iPads, meditation, line dancing, scrabble, social cards, sketching, bingo, carpet bowls & Pilates. Weekly cafe (Fri), accr. programs for special needs; Refresh for teens. Ph. 9808 2000. e: info@theavenue.org.au w: theavenue.org.au

Balwyn Community Centre, Surrey Hills

412 Whitehorse Rd. Ph. 9836 7942 Classes/workshops incl. art; crafts, cooking, language (Italian, French, German); fitness & exercise, Pilates, Yoga, Tai Chi, meditation. Special interest groups, monthly Vege Swap and community groups meet at the Centre. Function Centre and small room hire. w: balwyncc.org.au e: reception@balwyncc.org.au

Bennettswood N'hood House

7 Greenwood St, Burwood. Ph. 9888 0234. Welcoming & inclusive; participate in social groups & activities: arts, music (ukulele/singing), Be Connected technology training, gentle exercise, dementia-friendly lunches & venue hire for community groups, children's parties/classes. e: info@bennettswoodnh.org.au w: bennettswoodnh.org.au

Bowen Street Community Centre

102 Bowen St Camberwell. Ph. 9889 0791. Activities incl Playgroups, IT help, Italian, Yoga, Sewing & Language Conversation classes. CCS Approv. Childcare: 3 & 5 hr Wed & Fri, 5hr Thurs. Party/meeting rooms for hire. w: bowenstreet.org.au e: info@bowenstreet.org.au

Box Hill South N'hood House

47 Kitchener Street. Ph. 9898 8270. w: bhsnh.org.au Wide range of programs including fitness (Yoga, Pilates, Strength training), Art/crafts (watercolour, botanical drawing, craft). Languages: French. Group & social activities, computer training. Whitehorse Urban Harvest Swap. Umbrella Dementia café. Room hire. e: info@bhsnh.org.au

Camberwell Community Centre

33 Fairholm Grove. Acrylics, Pastels, Drawing, Oil Painting, Watercolour, French, German, Spanish, Yoga, Tai Chi, Pilates, Line Dancing, Qigong, Pottery, Walking Group, Book Club, Bridge, Solo, Mahjong, Seniors Groups Ph. 9882 2611 e: contact@camberwellcc.org.au w: camberwellcommunitycentre.org.au

Canterbury Neighbourhood Centre

2 Kendall Street. Watercolour, open art, upholstery, literature, writing, history, yoga, Pilates, Tai Chi, Zumba, walking groups, book clubs, French and Italian language classes, mah jong, bridge, garden club and more. Free trials available. Ph. 9830 4214 w: canterburync.org.au

Clota Cottage Neighbourhood House

31 Clota Ave, Box Hill. Ph. 9899 0062. Learn/socialise/join in. Courses: Computers/Digital Devices, Business Admin. Chinese speaking computer group. English & Mandarin classes. CHSP activities for over 65s incl. exercise classes, movies & outings. Gardening group, volunteer opportunities & more. Visit website for info. & sign up for our newsletter: clotacottage.org.au

Craig Community Centre

7 Samarinda Ave, Ashburton Ph. 9885 7789. w: craigfc.org.au Occ. Care & Kinder programs, Facilitated Playgroups, Primary & Secondary homework support, Seniors Activities, Volunteer Opportunities, Hall Hire. e: enquiries@craigfc.org.au

Kerrie Rd Neighbourhood House

36 Kincumber Dve Glen Waverley. Yoga, Strength Training, Pilates, Gentle Exercise, Salsa Dancing, Kids'/adults' Art Classes, Playgroup, French/Spanish classes, Monday Walking Group, Knitting Group, Japanese Playgroup, Waverley Widowed Support Group, Hungarian Social Group. e: info@knh.org.au w: knh.org.au Ph. 9887 6226.

Kerrimuir Neighbourhood House

57 Linda Ave Box Hill Nth. We provide a range of classes & activities to suit all ages. From Art Classes to Strength & Fitness Classes. See our website for more details: Ph. 9899 7660. w: kerrimuirhouse.org.au

Koonung Cottage Community House

109 Koonung Rd, Blackburn Nth. Classes & workshops incl. Exercise, Meditation, Yoga, Drawing, Botanical Illustration, Craft, Spinning, Mahjong, Book Groups, Gossip & Games, Childcare, Grandparents' Playgroup, Men's walking group, support groups & venue hire. e: admin@koonungcottage.org.au Ph. 9878 6632. w: koonungcottage.org.au

Louise Multicultural Comm. Centre

Suite 8, Town Hall Hub, 27 Bank Street, Box Hill. Ph. 9285 4850. w: louise.org.au, e: info@louise.org.au Classes & activities: EAL/ESL (beginners, inter., advanced), Mandarin, Computer/iPad, Conversation Groups, Korean Drumming, Knitting, Social interest, Aust. Culture & History, Chinese & Korean Calligraphy; Dancing for Fitness.

Mount Street N'hood House

6 Mount St, Glen Waverley. Ph. 9803 8706. Drawing/Painting, Mosaic, Decoupage, Paper Tole, Patchwork & Quilting, Yoga, Strength Training, Pilates, Gentle Exercise, Meditation, Seniors IT – basic & advanced computer skills, Tablets, Smartphones. e: mountst@msnh.org.au w: msnh.org.au

Phoenix Park N'hood House

22 Rob Roy Rd Malvern East. Walking groups, Pilates, Yoga, Tai Chi, HeartFIT, Zumba gold. iPad /Tablets classes. Art classes adults/children. Writers, Discussion, Film & photography groups. Mahjong, Singers, Art & Craft. Hrs 9–4:30/3pm Fri) Ph. 9530 4397 w: phoenixparknh.org.au

Power Neighbourhood House

54 Power Ave, Ashwood. Ph. 8849 9707. e: office@powernh.org.au English Language, Art for Health & Wellbeing, Gardening, Children's Storytime, Chinese Social Group, Art & Craft, Carer Support, Connecting Teens, Yoga, Crochet & Knitting, Book Group, Homework Club, Asperger's Vic., C'well Salvos, Free Bread Tuesdays, Public Computer Access, Wheelchair access. w: powernh.org.au

Samarinda Community Centre

296 High St Ashburton. Ph. 1300 591 464. Exercise programs include: Gentle exercise, Line dancing, Zumba Gold, Qui Gong. Social activities include: Bus excursions, Table Games, Craft, Art, Entertainers & guest speakers. w: samarinda.org.au

Surrey Hills Neighbourhood Centre

157 Union Road. Ph. 9890 2467. e: enquiries@surreyhillssnc.org.au w: surreyhillssnc.org.au Mon-Thu 9am-3:30pm Fri 9am-2:30pm. Venue hire. Playgroup, drop in m/tea, disc. groups, laughter, painting & drawing, craft, cooking. Active: Tai Chi, bike riding, Pilates, walking, yoga, Qi Gong, strength training, short courses, workshops.

Waverley Community Learning Centre

5 Fleet St, Mt Waverley. Ph. 9807 6011. Programs & activities include: art, sewing, crochet, fitness drumming, pilates, strength training, yoga, calligraphy, creative writing, technology, English classes, children's art, Lego robotics, cooking & more. w: wclc.org.au e: info@wclc.org.au

BASScare The Canterbury Centre, 2 Rochester Rd. **Activities for over 55s** incl. outings, exercise, Seniors Yoga, Strength & Balance, art/craft groups & tech assistance. Ph. 9889 4709. e: socialsupport@basscare.org.au

PLACES OF WORSHIP

ANGLICAN

Camberwell South Anglican

Cnr Toorak Rd & Bowen St. 10am
Sunday. Rev David Huynh. Ph: 9889 4813.
e: info@csac.org.au

Church of the Ascension, East

Burwood Cnr Blackburn Rd &
Witchwood Cres. Sun. 8am, 9:30am; Wed.
10am; Fri. 9:30am. Ph. 9802 4863.
w: ascensionchurch.org.au

Holy Trinity, Surrey Hills

Cnr Union Rd & Montrose St. Sun 8am,
9:30am, weekly on Wed 10am. 1st Sun
11.15am Kids' Church; 5pm Choral
Evensong. Vicar: Rev. Mark Pearce. Office:
9890 2165. w: holytrinity.sh

St Dunstan's, Camberwell

163 Wattle Valley Rd. Vicar: Fr. Jobby
John. Services Sun 9.30 am. Other
activities, subject to prevailing COVID
restrictions. w: stdunstans.org.au

St Edward's, Blackburn South

59 Edinburgh Rd. Sun. services 8am &
10am. Vicar: Rev. Rob Culhane
Ph. 9877 3665 Mb 0412 832 328

St Faith's, Burwood 6-8 Charles St.,
Glen Iris. Rev. Heather Scott 0433 477 365
e: vicar@stfaiths.org

Enquiries e: office@stfaiths.org
Sun. Eucharist 10am. Labyrinth open daily
Updates/special events: www.stfaiths.org

St Matthew's, Ashburton

334 High St (cnr Warrigal Rd).
Communion: Sun. 9:15am (English) and
10:30am (Malayalam).

St Oswald's, Glen Iris 100 High St,
Glen Iris. Vicar Rev. Glenn Loughrey
e: vicar@stoswaldsgleniris.net.au
Ph. 9885 1125. Sun 8am & 10am (5th
Sun 9:30am only), Wed. 10am Holy
Communion.

St Peter's, Box Hill 1030 Whitehorse Rd.
Rev. Anne Kennedy (Locum). Services:
Sun. 8am, 9.30am, 11:30am (Mandarin),
2pm (Dinka). Wed. 10:30am.
Ph. 9899 5122 w: anglicansboxhill.org.au

St Stephen & St Mary, Mt Waverley
383 High Street Road. Vicar: Rev. Dianne
Sharrock. Sun. 8am and 10am (esp. for
kids). Thurs. 10am.
Ph. 9807 3168; 0407 334 928.
w: stephenandmary.org.au

St Thomas's, Burwood 44 Station St.
Vicar: Rev. John Carrick Ph. 9808 3250,
0412 438 021. Sun. Svcs: 8:30am,
10:30am, 10:30am (Cantonese), 2pm
(Mandarin), 7pm. e: johnc@sttoms.org

BAPTIST

Ashburton Baptist 8 Y St, Ashburton.
Services: Sun 10am (incl. Sunday Club).
Ph. 9885 8210 w: ashburtonbaptist.org.au
e: info@ashburtonbaptist.org.au

Camberwell Baptist Cnr Riversdale
Road and Wills St, Hawthorn East.
Sunday Service 10am. Ph. 9813 0538.
e: office@camberwellbaptist.org

Crossway Baptist, East Burwood

2 Vision Dr. w: crossway.org.au
Eng.: Sat. 5pm; Sun. 8:45/10:15am.
Mandarin: Sat. 5pm; Sun. 10:15am (Zoom).
Cantonese: Sun. 8:45/10:15am. Korean:
Sun. 10:15am. Indonesian: Sun. 10:15am.

East Camberwell Baptist

Cnr Highfield & Hunter Roads, East
Camberwell. Sun. 10:30am.
Pastor: Murray Hogg. Ph. 9836 6063.

Syndal Baptist 588 High Street Rd,
Glen Waverley (park off Tricks Ct) Sun.
8:30am, 10.30am & 6pm. Ph. 9803 9144,
e: admin@sb.org.au w: sb.org.au

CATHOLIC

St Benedict's, Burwood 299 Warrigal
Rd. Ph. 9808 2492. Fr Daniel Serratore.
Mass 5pm Sat, 10am & 5pm Sun. 9am
Tue-Sat. w: stbenedicts.com.au
e: admin@stbenedicts.com.au,

**St Francis Xavier/St Clare Parish,
Greater Box Hill SFX Church** - Cnr
Whitehorse & Dorking rds, Box Hill/**St
Clare Church** 138 Woodhouse Gve, Box
Hill North Fr Tony Kerin Ph: 9401 6371
Mass: **SFX** Mon - Fri noon, Sat 5:30pm,
Sun 7:30am, 10:15am, 5:30pm **St Clare**
Wed 9am, Thu 7pm, Sat 9am, Sun 9am,
Italian 11am. e: boxhill@cam.org.au
w: www.scfx.org.au

St Michael's, Ashburton 268 High
Street. Parish Priest: Fr Laurence Cortez.
Ph. 9401 6345. Mass: Sat 6:30pm, Sun,
9am, 10:30am. Tues-Fri 10am,
e: ashburton@cam.org.au

St Scholastica's, Bennettswood

348 Burwood Hwy. Father Daniel
Serratore. Mon 11am; Tues 9am;
Wed 11am; Thurs/Fri 9am; Sat
5:30pm; Sun 9am, 11am. e: admin@
stscholasticaparish.com.au Ph. 9808 2492

UNITING/PRESBYTERIAN

Ashburton Presbyterian cnr High
St & High Street Rd, Opp. 391 High St.
Pastor: Rev. Barry Oakes. Sun. 10am.
w: ashburtonpc.org.au
e: office@ashburtonpc.org.au

Ashburton Uniting

3 Ashburn Grove. Ph. 9809 1795. Rev.
Lavingi Tupou. Sunday Service 10am, 4th
Sunday Messy Church 5pm.
w: ashburton.unitingchurch.org.au

Burwood Community Presbyterian

Cnr of Greenwood & Tennyson Sts.
Sunday worship 11am Rev Dr John
Elnatan 0431 662 869
e: john@bcpc.net.au

Burwood Heights Uniting

Cnr Burwood Hwy & Blackburn Rd.
Burwood East. Minister Rev. Hye-Ja Kim.
Office: 9803 7631. Sunday service 9:30am.

Burwood Uniting 1 Hyslop St.

Worship Sun 10am
Hall Hire: Pam 98092917
e: burwooduc146@gmail.com
http://burwood.ucavictas.org.au

Glen Iris Rd Uniting Church & Community Care

200 Glen Iris Rd.
Ph. 9885 8219. Rev. Gareth Darlow. 10am
Sun. services. BBQ & Communion 1st Sun
of month. w: gleniris.ucavictas.org.au/
e: office@gleniris.victas.uca.org.au

St Luke's Uniting, Mt Waverley

94 Essex Rd. Office: 9807 2656. Sun.
9.30am. Fun at Five: 5pm 3rd Sun: craft,
song, soup, shared meal - families.
Ph. Amy 9803 4462.
e: jamesdouglas@ozemail.com.au

Surrey Hills Uniting

Cnr Canterbury
Rd & Valonia Ave, Surrey Hills. Sun. Svc
10am (incl. Sunday School). Rev. Rob
Gotch, e: robgotch@optusnet.com.au
Ph. 9898 1097 w: surreyhillsuniting.org

OTHER CHRISTIAN CHURCHES

City Edge, Surrey Hills YWAM Base,
19 Middlesex Rd. Pr Ian Gould.
Ph. 0490 946 655. Services: Sun. 10:30am.
w: cityedgechurch.com.au

**Grace Christian Community, Box
Hill South** 234 Elgar Rd. Sun. Service
11:30am (incl. lunch), activities, children's
programs, English conversation
Pastor: Tim Grant 0402 295 691.
w: gracechristiancommunity.org.au

The Salvation Army, Camberwell

7-11 Bowen St. Sun. worship 10am &
5pm. All welcome. Sun/School 10am
school terms. Ph. 9889 2468.
w: salvationarmy.org.au/Camberwell

Wattle Park Chapel 234 Elgar Rd,
Box Hill South. Pastor: Richard Coombs.
Ph. 9808 2728. Sun. 10am. Kids' Club &
Seniors' outings, group Bible study.
e: office@wpchapel.org

OTHER FAITHS

Bao Lin Chan (Zen) Buddhist

Monastery 94A High Street, Glen Iris.
Non-profit Buddhist org. Free meditation
classes - learn the art of mindfulness.
Free but please register. Ph. 9813 8922
w: chungtai.org.au

Shree Shirdi Sai Mandir Melbourne

32 Halley Ave, Camberwell. Glorious
Sai Baba Temple. Mon-Sun 9am-1pm;
5pm-9pm. w: shirdisai.net.au



Community Notices

Childcare & Activities

Aurora School, Blackburn South

Specialist school for young deaf & deaf blind children. Mon–Fri 9am–3pm. Early intervention staff visit families in homes. 96 Holland Rd. Ph. 8878 9878.

Avenue N'hood House @ Eley,

Blackburn Sth Occ. care 9am–3pm Mon–Fri (bookings essential). Bubba Beats music group for children 0–4 yrs. Thurs morns. Ph. 9808 2000. w: theavenue.org.au

Blackburn South Playgroup

St. Edwards Church, 59 Edinburgh Rd. Thurs mornings 10am–noon. New members welcome. Ph. 0418 537 955 e: suzanne.marazzato@bigpond.com

Facilitated Grandparents'

Playgroup Koonung Cottage Community House 109 Koonung Rd, Blackburn North. Wed. school terms 9:30–11:30am. \$45 per term. Ph. 9878 6632. e: admin@koonungcottage.org.au

French Playgroup in Camberwell

"Le jardin des enfants". Camberwell South Anglican Church, 101–103 Bowen St. Wed 10–11:30am. \$5 per family. Ph. 0450 676 537. e: french@csac.org.au

Grandparents/New Families

Playgroup, Camberwell Bowen Street Community Centre, 102 Bowen St. Various times. Ph. 9889 0791. e: info@bowenstreet.org.au

Playgroup at Burwood Heights

Uniting Church Cnr Burwood Hwy & Blackburn Rd East Burwood. Wed. 10am school terms. Ph. Edith 0410 756 203 or Marg 9955 4532.

Playgroups & Kids' Club St Thomas's Anglican Church, 44 Station St, Burwood. Thurs, 3:30–6:30pm, \$5, dinner incl. School aged, yrs 1–6. Playgroups Tues & Thurs 10–noon. e: Rachel, rachelgh@sttoms.org.

William St. Playhouse, Hawthorn

Mon–Thurs 9am–3pm. \$80 per 6-month family membership incl. Mon activity group. Ph. 9819 2629. e: Williamstplayhouse@hch.org.au

Community Music & Singing

Blackburn North Sing Australia Group

Thurs 7:30pm. Community Centre Forest Hill Village, 264 Springvale Rd. Perform for comm. orgs. 1st wk free; no auditions. Ph. Mick 0414 484 080.

Box Hill Chorale Friendly community choir meets Mon 7:30pm at Box Hill Community Arts Centre. Singers from 15 up welcome. e: info@boxhillchorale.org.au

Celtic Jam, Box Hill Box Hill Community Arts Centre, 470 Station St. Ph. Judy 0422 868 680. Thurs. 7:45–9:15pm. Easy-going jam session; learn a tune p.w. New members welcome. \$10.

Cloud9 Women's Choir Nth Balwyn Uniting Church, 17–21 Duggan St. We rehearse Thurs. 7:30–9:30pm school terms. New members welcome. w: cloud9womenschoir.com

Community Singing at Bennettswood N'hood House

7 Greenwood St, Burwood. Sing & String-along Mon. 11:30am–12:45pm. Fees vary. Book at office or ph. 9888 0234.

Creativity Australia – With One Voice, Ashburton

Ph. 8679 6088 Ashburton Baptist Church, 8 Y St. Entry: Marquis St carpark. Wed. 6:15–7:30pm. Supper incl. e: withonevoice@creativityaustralia.org.au

Majellan Singers, Ashburton

Like to join a small, friendly women's choir? Rehearsals in Ashburton Wed. 7:30–9:30pm. \$450 p.a. For info or audition Ph. Rosemary 0416 267 500.

Open Door Community Singers

Habitat Uniting Church, cnr Burke & Mont Albert Rds, Canterbury. Mon 7:30–9:30pm. \$85 pa (admits to all Open Door choirs), \$8 per night. Ph. 0419 894 340.

Open Door Gospel Singers

Details as above. Thurs 7:30–9:30pm.

reCHOIRed Community Choir

Rehearses in Surrey Hills 7:30–9pm Wednesday school terms. No auditions. e: pricetj1963@gmail.com w: rechoired.com

Scotsglen Singers Inc. Ph. Elizabeth 0407 542 680. All-female choir entertains shut-ins, raises money for charity. Rehearse Glen Waverley Thurs pm. Perform regularly in local area. Membership: \$85.

Sing Australia Choir, Camberwell

Camberwell Uniting Church, 314 Camberwell Rd. Community-based choir. Tues. 10am–noon. Annual sub., plus \$10 per visit. No auditions. Ph. 0439 381 091.

Treble Tones Join ladies who enjoy singing. Rehearsals Wed mornings, Burwood. Membership: \$110 pa. Ability to read music desirable. Ph. Lorraine Pollard 9807 5936.

Ukulele & Singing (BUGSS)

Bennettswood Neighbourhood House, 7 Greenwood St, Burwood. Mon. 11:30am–12:45pm. Ph. 9888 0234. e: info@bennettswoodnh.org.au

Victoria Welsh Male Choir,

Blackburn South Wed. 7:30–9:30pm St Edward's, Edinburgh Rd. Ph. David on 0413 077 573. Looking for men who can hold a tune. Great camaraderie. w:vicwelshmenschoir.com.au

Yarra Gospel Community Choir

Friendly inclusive group, inspiring songs, 1st night free, no auditions. Wkly \$12.50, music provided, wine/cheese supper. Thurs 7:15 pm St. John's Camberwell Ph 0421277862 e: info@yarragospel.org

Community Shopping

Animal Welfare Op Shop, Camberwell

1355 Toorak Rd. Mon–Sat 11am–5pm. Shop, donate, recycle. Nothing over \$20. Quality new/recycled clothing, books, etc. We can pick up. 9889 9435 shop hours.

Kindilan, Mont Albert 9 Hamilton St. Ph. 9899 5431. Mon–Fri 10am–5pm, Sat 9:30am–1.30 pm. Boutique Op Shop.

Lions Club of Boroondara Central Op Shop

1350C Toorak Rd, Camberwell. Ph. 9809 4950. Bric-a-brac, clothes, furn., etc. Mon–Thurs 10:30am–4:30pm (Fri–4pm), Sat 9:30am–12:30pm. Proceeds to community.

Rotary Recycled Treasures Op Shop, Blackburn

113 Canterbury Rd. Ph. 0451 200 237. Books, clothing, jewellery, bric-a-brac. Accept elec. goods. All funds to Charity Projects. Mon–Fri 10am–4pm, Sat 10am–1pm.

Rotary Recycle Op Shop, Surrey Hills

1113 Riversdale Rd. Excellent range of books/bric-a-brac/ladies wear. All profits to community projects. Mon–Fri 10am–4pm; Sat 10am–1pm. Volunteers welcome.

Salvation Army Thrift Shop,

Ashburton 401 High St. Books, toys, clothing, bric-a-brac. Accept elec. goods, not monitors/TVs/scanners. 8:30am–5pm. Mon–Sat. Leave goods at Shop rear bus. hrs. Ph. 9885 4965.

Samarinda The Ashy Op Shop

Cnr High St & Welfare Pde. Mon–Fri 10am–4.30pm, Sat. 9:30am–4pm, Sun 11am–3pm. Easy drop off. All proceeds help aged locals. Ph. 9058 6050.

Uniting Op Shop, Forest Hill

333A Canterbury Rd. Newly renovated Op Shop, Open 9.30am–1.00pm, Tues–Sat. Friendly volunteers. All funds to local & O/S charities. Ph. 9878 3222.

Vinnies Mont Albert

24 Hamilton St. Ph. 9898 0720. Mon–Sat 10am–5pm. A unique Op-shopping experience with a great range of clothing, homewares, books etc.

YES Op Shop, Forest Hill

53 Mahoneys Rd. Ph. 9894 0992. Youth Education Support Inc. sponsors young disadvantaged people. Shop, donate, volunteer. Books, toys, clothing, bric-a-brac.

Crafts & Hobbies

Abbey Girls of Victoria

Phone Margaret on 9886 0232. Bennettswood N'hood House, 7 Greenwood St. Club based on Elsie J. Oxenham's books.

Australian Philatelic Society

Memorial Homes Hall, 152 Canterbury Rd, Canterbury. Meets bi-monthly. Interesting displays at meetings. Visitors/ new members welcome. Ph. John Young 9889 1385.

Box Hill Art Group Inc. NFP. Highly qualified tutors. Flexible classes: beginners/ experienced in watercolour, oils, pastel, acrylics, etc. Ph. Eric 0424 775 540. w: boxhillartgroup.com.au

Box Hill Hand Spinners & Weavers

Box Hill Comm. Arts Centre, 470 Station St. NFP. Meet Wed 7–9.30pm Thurs 10am–2pm. Workshops in dyeing, felting. Library & equip. loan avail. Ph. 0400 669 383. e: boxhillspinweave@gmail.com

Camberwell Camera Club

Rutherford Rm, St John's Anglican Church, 552 Burke Rd. Ph. Wolf 0428 398 446. 7:30pm, 2nd/4th Mon. Speakers, comps, outings. w: camberwellcameraclub.org.au

Camberwell Film Society 3rd Wed (Feb–Nov), 2nd Wed Dec with party. Prompt 7:30pm start. Camberwell Community Centre, 33 Fairholm Gr. Includes tea/coffee. Must be 18 years+. Ph. Bill Kerr 9347 6969.

Dream Stitches St Aidan's Church Hall, 10 Surrey St, Box Hill Sth. Friday 9:30am–noon school terms. Community-based sewing for migrant & refugee women. w: dreamstitches.org.au

Forest Hill Woodturners Sat 9:30–noon; Mon (2 sessions) 9:30–noon & 12:30–3pm. Warrawong Annex, 32 Richmond St, Blackburn Sth. Learn & practise woodturning with quality equip. & skilled instructors. w: fhwt.org.au

French Book Club in Camberwell Camberwell Sth Anglican Church, 103 Bowen St. Relaxed chat about French books & novels with other French speakers. Sun. 2–3pm. Ph. 0450 676 537 e: French@csac.org.au

Jane Austen Society of Melbourne Inc., Ashburton Purves House, 303 High St. Meet 2pm last Sat. Feb, Apr, Jun, Aug, Oct, Nov. Guest speakers, afternoon tea, raffle. Guests welcome. Charge \$5. Ph. 0407 985 614. w: jasm.org.au

Melbourne Numismatic Society Inc. Box Hill Community Arts Centre, cnr Station/Combarton Sts. 2nd Thurs, exc. Jan. Learn about coins, notes, badges, medallions. Ph. 9725 0945 e: monica.deknecht@bigpond.com

Needlework Tapestry Guild of Victoria Inc. Box Hill Comm. Arts Centre, 470 Station St. Sat 8:30am–3pm 2nd Wed 11am–3pm. Ph. Anne Bryan 0400 644 086 or 9728 3256. e: eannebryan@gmail.com

Nunawading & District Lapidary Club Nunawading Community Hub, 96 Springvale Rd. Club night 2nd Wed. Mineral group 3rd Wed. Juniors (12–16) Sat 1–4. Cut & polish gems & silver work. ndlc@ndlconline.asn.au

Power N'hood House Book Group 54 Power Avenue, Ashwood. Chat about books over a cuppa. Meets 3rd Wed, 10–11:30am with bestsellers from free Monash Library Book Group. All welcome. w: powernh.org.au

Surrey Park Model Boat Club Meets Wed & Sun mornings 9am–noon at Surrey Park Lake. Supports a range of model boating interests. w: spmbc.org.au

Victorian Button Collectors' Club Burwood Hts Uniting Church, cnr Burwood Hwy & Blackburn Rd. 2nd Tues 8pm. Ph. Robyn 9884 5675. w: vicbuttonclub.com.au

Waverley Film Society, Mt Waverley Church hall, St John's Uniting Church Virginia St. 7:45pm 2nd Wed Feb–Dec. Older "classic" films. Ann. m/ship \$30 (1st visit free). Ph. Brett 9807 3426. w: waverleyfilm.org.au

Waverley Gem Club Central Reserve, Glen Waverley. Wide range of activities: gem cutting, silver smithing. Training at Mt Waverley. Ph. 9561 4027 w: https://tinyurl.com/y5gp8s4j

Waverley Scale Modelling Club Wadham House, 52 Wadham Pde, Mt Waverley (behind library). Meet 2nd Tues, Feb–Dec, 7:30–10:30pm. NFP for Scale Model builders. Ph. Edward Russell 9857 6891.

Waverley Patchworkers Inc. Mt Waverley Community Centre, Millers Cres. 4th Monday of the month, 7–9pm. Day meeting groups & times Ph. Heather Cartmel 0427 453 775 w: waverleypatchworkers.com.au

Waverley Woodworkers Inc. Central Reserve, Glen Waverley. Under Grandstand. Enter from Springvale Rd. New members welcome. Open 7 days (AM) & some other times. w: waverleywoodworkers.com

Whitehorse Film Society, Willis Rm, Whitehorse Civic Centre, 379 Whitehorse Rd, Nunawading. 7:45pm, 1st/3rd Sat. Feb–Dec \$55. Ph. 9877 1474 or 9800 1825 w: whitehorse.filmsociety.org.au

Dance & Exercise

Box Hill Ballet Association Inc. NFP. Classical ballet (Cecchetti), Jazz, Tap, Folk, Wu Tao. Students 4yo–adult. Adult beginners. Ph. 0407 524 278. w: boxhillballet.com.au e: boxhillballet@gmail.com

Dance for Fitness Box Hill Community Arts Centre, 470 Station St. Mon, 1–2pm. Low impact informal dance class for those who don't like gym. Ph. 9895 8888. w: bhcac.com.au

Dance for Parkinson's, Camberwell Uniting Church, 314 Camberwell Road. Fridays 10–11am. \$5 donation. e: quixoticdancetech@gmail.com

English Country Dance Bennettswood N'hood House, 7 Greenwood St, Burwood. Tues 8–10pm. \$5. All dances taught. Partners not nec. Think Pride & Prejudice. Ph. George on 9890 5650.

Hong Kong Club Tai Chi Group Evergreen Centre, 45 Talbot Ave, Balwyn. Tai Chi & Qigong classes – various forms. Sat. 8:30am–1pm. Ph. Sam 0418 101 937 e: hongkongclub.taichigroup@gmail.com

Melbourne Colonial Dancers Ashburton Uniting Church Hall, 3 Ashburn Gve. Most 3rd Thurs 8–10pm, \$10, Members \$8. For info see Facebook or w: melbournecolonialdancers.org.au Ph. 0493 219 385

Scottish Country Dancing, Surrey Hills Surrey Hills Uniting Church, 679 Canterbury Rd, Tues Mar–Nov 7:30–10pm. \$7. Beg. & exp. welcome. Flat, soft shoes. Ph. 0425 883 218. e: boxhillscottish@yahoo.com.au

Surrey Dance St Matthew's Church Hall 334 High St. Ashburton. Friendly & welcoming venue. Ballroom, New Vogue & Latin. Wed 7–10:30pm Ph. Fred 0418 340 111; Debbie. 0412 297 025.

Let's TAP Cardio & Low Impact Tap Dancing Classes Experience not req, enthusiasm & energy essential. \$22 a session, \$100 per 6–class pass. Ph. Lisa 0431 887 697 w: LetsTAP.com.au pass.

Education/Self-improvement

Boroondara Toastmasters Burwood N'hood House, 1 Church St. 1st & 3rd Thurs 7:30pm Communication, leadership and self-confidence skills. e: boroondara.toastmasters@gmail.com Ph. 0408 008 801.

Glen Iris Toastmasters Club Glen Iris Community Centre, 200 Glen Iris Rd. 2nd/4th Wed 7:15pm. Improve leadership, public speaking, self-confidence. Ph. 0420 846 853. e: vidhu1001@gmail.com

MPower Me Homework Club 54 Power Ave, Ashwood. A fun group with qualified tutors supporting primary school children with homework on Tuesdays during school term 3:30–5pm. Ph. 9807 3589.

Speaking Made Easy, Camberwell Camberwell Library, 340 Camberwell Rd. 4th Thurs 12 for 12:15pm start. Public speaking for women; communicating with confidence; meeting procedures. Ph. 0459 186 670 w: speakingmadeeasy.com.au

U3A, Box Hill 29 Strabane Ave. Learning & social activities for seniors. Art, exercise, games, history, iPad, languages, literature, meditation. Ph. 9898 3336. w: u3aboxhill.com.au

U3A, Hawthorn 26 Sinclair Ave. Ph. 9821 0282. Educational, creative courses for retirees/semi-retirees. 90 courses/activities. Low annual fee. 10:30am–1:30pm Mon–Fri. w: u3ahawthorn.org.au

U3A, Nunawading Ph. 9878 3898. e: admin@u3anunawading.org.au Semi & Retired people; 250+ classes: IT, languages, art craft, humanities, science, exercise etc. w: u3anunawading.com.au

Environment & Gardening

Ashwood College Permaculture Food Garden Open 10:30am Wed & Sat. New volunteers always welcome First Ashwood High entry off Vannam Dr. (30m on right at end of school drive). Ph. Lynda 0404 083 272 or Facebook.

Back2Nettleton Friends, Glen Iris Share the joy of scattering mulch, pulling weeds & planting, finishing with a cuppa & chat. Contact Ruthie Scharley or Jeff Patchell (Ph. 0419 394 979) or e: Back2Nettletonfriends@gmail.com

Community Notices

BASScare Maranoa Club Gardening. 6 Faversham Rd, Canterbury. Monthly workshop with master gardener Martin. Cost: \$5, Incl. morning tea. Ph. 9880 4709. e: socialsupport@basscare.org.au

Bellbird Dell Reserve, Vermont Sth Ph. 9262 6333. Working bees 1st Sat. 10am-noon, m/tea. Dig and make friends! Check Dell noticeboard, take garden gloves, tools provided. e: info@bellbirdell.org

Box Hill Garden Club Springfield Park Pavilion (cnr Dorking & Springfield roads) 3rd Tues 10am. Guest speakers. All welcome. Ph. Yvonne 9808 5112. e: boxhillgardenclub@gmail.com

Bungalook Nursery, Blackburn Sth Buy/help prepare/propagate indigenous plants to distribute to homes/parks; collect seeds/cuttings. Also friendly volunteer Social events. See website for times. e: wcipp@yahoo.com.au w: wcipp.org.au

Burwood Community Garden Grow your own flowers/veges in one of our 16 plots at 15 Sinnott St. \$20 joining fee, \$50 deposit (refundable if garden left in good condition) & \$20 pa. Contact the Secretary: burwoodcg@gmail.com

Camberwell Morning Garden Club Camberwell Petanque Club rms, Wakefields Gr. (Mel. 60F4) 9:45am-noon, 2nd Thurs, Feb-Nov. Plant stall, outings. Visitors welcome Ph. 0413 790 051 e: cmgcvic1979@yahoo.com

The Field Naturalists Club of Victoria Inc. Groups hold monthly meetings 1 Gardenia St, Blackburn. Visitors welcome for small fee. Groups: Botany, Fauna, Geology & more. Special juniors group. w: fncv.org.au

Friends of South Surrey Park 909-911 Riversdale Rd, Surrey Hills. New volunteers welcome to working bees. Last Sun. & every Tues. 10am-noon. w: facebook.com/southsurreypark Ph. 0437 959 013.

Greenlink Box Hill Indigenous Plant Nursery Indigenous plant nursery run by volunteers in nursery or parklands. Open Tues/Wed 9am-noon. Ph. 0479 121 653 (Tues/Wed) e: greenlinkboxhill@gmail.com

Lighter Footprints – Climate Action Group Guide Hall, Faversham Road, Canterbury. All welcome. Last Wed. 7pm for 7:30-9:30pm. More info: 0411 115 186. w: lighterfootprints.org

Vermont Garden Club Feb-Nov 2nd Thurs 8pm, Whitehorse Horticultural Centre, 82 Jolimont Rd, Forest Hill. Trading table, Bench, Raffle, Guest speakers, Supper. Friendly environment. All welcome. e: Louise, vermontgardenclub@gmail.com

Waverley Bonsai Group 3rd Tues 8pm, St Johns Church Hall, 37 Virginia St, Mt Wav. All levels plus weekend workshops. Annual show in August. New members welcome. Ph. Bruce Wensor 9802 8529.

Waverley Garden Club Mt Waverley Community Centre, 47 Miller Cres. Meets 1st Fri 7:30 for 8pm. Monthly guest speakers. Ph. Gill Read 0409 568 422. E: info@waverleygardenclub.com

Winton Road Food Forest, Ashburton A community-maintained food forest at Winton Road Reserve growing food organically & sustainably. Working bees 9-11am every 2nd & 4th Sat. morning. 38 Winton Rd. Ph. 0420 961 695.

Flowers & Floral Art Groups

Box Hill Floral Art Inc. The Pavilion, Box Hill Hawks FC cnr Middleborough & Whitehorse roads. 1st Thurs. Workshops 10am, demos by designers 1pm. BYO lunch. All welcome. Ph. 9898 2483.

Camellias Victoria Inc. East Burwood Uniting Church Hall, cnr Burwood Hwy & Blackburn Rd. Meets monthly 8pm 2nd Wed, Mar-Nov inclusive. Visitors welcome. w: camelliasvic.org.au

Chrysanthemum Society of Victoria Inc. Burwood Heights Uniting Church Hall, Cnr Blackburn Rd & Burwood Hwy. 2nd Sat 2:30pm. (excl. June). Cultivation specialist society to exhibition standards. Ph. 9898 5458.

Early Morn African Violet Group, Alvie Hall, cnr Alvie & High Street rds. Mt Waverley. 1st Mon. at 8pm & 3rd Wed. at 10am. Learn how to grow African violets, and make new friends. Ph. 5678 8814.

For Teens

Australian Youth Band, Ashwood Musical standard no lower than AMEB 5th Grade or equiv. Rehearsals Sat. 9am-noon, Parkhill Primary School Recreation Hall. Ashwood. w: ayb.org.au

Bao Lin Teens Meditation Class 94A High St, Glen Iris. Sat 7-9pm fortnightly. Learn lost art of mindfulness & discover happiness through Zen meditation. Classes free! w: chungtai.org.au Ph.9813 8922

Box Hill Jiu Jitsu Self defence-oriented martial arts training held at Aqualink Box Hill. Wed evenings & Sat afternoons. Beginners welcome. e: dan@bhjj.com.au w: bhjj.com.au

Connecting Teens, Ashwood Social group (13-18 yrs); Power N'hood House, 54 Power Ave. For all teenagers – esp. high functioning with Autism, Asperger's, ADHD. Ph. 9807 3589; e: office@powernh.org.au

Cruzin Study Homework Support Program Free homework support during school terms for 12-25 year-olds. Secondary, TAFE, uni subjects. Thurs 4-6pm, Box Hill Library, 1040 Whitehorse Rd. Ph. 9898 9340.

Epee and Sabre Fencing Learn Olympic sport of the sword: Fencing! Beginner classes every term. All equipment provided. Sat. 10-11:30am; Tues. 7:30-9pm. w: whitehorsechevaliers.com Ph. 0450 556 330.

Girl Guides Local age-specific groups welcome girls (6-10yrs; 10-13yrs; 14+). Weekly programs focus on new skills & challenges, self-respect, leadership & outdoors (incl. Camps). w: guidesvic.org.au

Homework Help Club, Surrey Hills Run by young adults during school term, free tutoring Yrs 7-10: Maths, English, Science. Fri. 5:30-7pm. St Stephen's Presbyterian Church, Canterbury Rd.

Monash Youth Services Info, support, referral, range of programs/activities for 10-25 y.o. Free service. 14 Bogong Ave, Glen Waverley. 9am-5pm, Mon-Fri. Ph. 9518 3900. w: myfs.org.au

Nunawading & District Lapidary Club Nunawading Community Hub, 96 Springvale Rd. Club night 2nd Wed. Mineral group 3rd Wed. Juniors (12-16) Sat 1-4. Cut & polish gems & silver work. ndlc@ndlconline.asn.au

Scouts Make new friends, expand your world. Offers an exciting & varied program for youth (boys and girls) aged between 5-25. w: scoutsvictoria.com.au

Waverley Gem Club Central Reserve, Glen Waverley. Ages 11 upward. Learn working with gemstones. Join us for field trips with parents & find your own gems. Ph. 9561 4027. e: waverleygemclub@gmail.com

Friendship & Activity Groups

Avenue N'hood House @Eley, Blackburn Sth 87 Eley Rd. Social groups meet weekly for interests incl. sketching, scrabble, crochet & cards for social players. Ph. 9808 2000. w: theavenue.org.au

Association of Independent Retirees Ph. 9886 8516. For those who intend or do fully/partly self-fund their retirement. Social meetings in Forest Hill. w: independentretirees.com.au

Boroondara Life Activities Club, Camberwell Day trips, lunches, mah-jong, table tennis, scrabble and other activities. Ph. Sue 0417 390 339.

Burwood Ladies Social Group Come meet new people and plan outings over tea or coffee. Monthly first Tues at 1pm, Ph. 9808 6292.

Camberwell Italian Senior Citizens 405 Camberwell Rd. Outings/bingo/lunches. Ph. Teresa Donato 0412 840 703.

Coffee Connect @ Camberwell Baptist Friendship time over coffee Wed. morning in Fellowship Centre; enter Riversdale Rd. Weekly during school terms 10am-noon. Share & make new friends. Ph. Margaret on 0412 422 309.

Friends Getting Together Inc. A NFP active social club for single people 55+. Full calendar of events every month. For info: w: friendsgettingtogether.org.au.

GOLD (Growing Older Living Dangerously) Friendly, supportive women over 55. Fun, new experiences. 10:35am–12:30pm 2nd Thurs. Craig Centre, 7 Samarinda Ave, Ashburton. Ph. 9885 7789. e: craig.cd@craigfc.org.au

Novus 50+ Singles Group Friendly & welcoming social group in eastern suburbs meets for weekly dinners at hotels/restaurants plus dances. Ph. Denise 0417 591 122 or email: novussingles@gmail.com

Vietnamese Senior Cultural Assoc. Inc, Ashburton 296 High St. Tues 9am–5pm. Exercises, singing group, lunches, dancing, table tennis. All welcome. Ph. Yen 0412 157 228. w: vietsca.wixsite.com/vsca

Whitehorse Activities Club Various groups: dancing, sporting activities, cards, walking groups, board games & golf. New members welcome. e: wacsecretary@gmail.com

Wominjeka Garden, High St Glen Iris St Oswald's Anglican. Med/Prayer 8am Mon Tues Thurs. 7:30am Wed. Night Conv./Shared Meal (bring a plate) fortnightly Wed 6pm. w: stoswaldsgleniris.net.au/events

Probus Clubs

For information about local Probus Clubs please go to our website at burwoodbulletin.org/probus-clubs

Health & Support Groups

Anxiety Recovery Centre Victoria (ARCVic) OCD & Anxiety Support Group. 1st/3rd Tues 7:30–9:30pm Hawthorn Community House. 32 Henry St, Hawthorn. Ph. 9830 0566. e: admin@arcvic.org.au

Aphasia Support Group Link Health & Community – Batesford Hub, 94 Batesford Rd, Chadstone. Fortnightly group for Aphasia sufferers & their families. Ph. 1300 552 509. w: linkhc.org.au

Betting On A Better Life! MonashLink Community Health project. Gambling concerns? Activities. Ph. Judy Avisar 0426 245 897 or 1300 552 509. e: javisar@monashlink.org.au

Blackburn Take Off Weight Naturally Club Avenue N'hood House @ Eley, Eley Rd. Friendly Weight Loss Support. NFP weight loss club can help you. Meets Mon, 9:30–11:30am. Ph. Rene Gale 9874 4043.

Box Hill Prostate Cancer Support Group 9:30–11:30am, 3rd Tuesdays. Box Hill RSL Upton Room, Nelson Rd. Onsite parking. Ph. Bert Alesich 0418 344 057

Day Respite for People Living with Dementia Samarinda's Elsie Salter House, 11 Marquis St, Ashburton. Day respite for carers of those living with dementia, memory loss or confusion. 4 days p.w. Ph. 1300 591 464

Disability Support & Respite Program Social groups for young people 16 yrs up with intellectual disabilities. Group fitness, cooking, outings. Tues. afternoons & Sat. Ph. Leza, Craig Family Centre, 9885 7789.

Eastern Suburbs Widowed Support Our Group helps widows/widowers recover after their loss. Weekly meetings incl. guest speakers; social outings. Ph. Lesley 9725 6843 or Nonie 9802 2316.

Evening Warm Water Exercises Mon/Thurs, Peter James Centre. \$9 per session. Run by physiotherapists. For people with musculoskeletal disease. Eastern Suburbs Hydrotherapy Inc. Ph. 0467 631 835.

Kara House Outreach Service Domestic Violence Support Agency. For women experiencing domestic violence. Support to women from diverse cultural & linguistic backgrounds. Ph. 1800 900 520.

Melbourne East Disability Advocacy, Surrey Hills Provides individual/citizen advocacy to those with intellectual disabilities in Boroondara, Monash, Whitehorse. Ph. 9808 8633. e: office@meda.org.au w: meda.org.au

Melbourne Osteoporosis Support Group Inc. Newsletters posted to all members. Phone Janeene 5282 2767. w: melbosg.org.au and Facebook.

Nunawading Take Off Weight Naturally Club Friendly, low cost, support group for men & women. Meets Forest Hill Uniting Church Wed 6:30–8pm. Ph. Margaret 9894 4942.

Parkinson's Victoria Inc. Boroondara Camberwell Support Group. Meet last Mon. 10am–noon. Ph. Parkinson's Victoria 1800 644 189.

Personal Helpers & Mentors Program, Monash Lvl 1, 12 Hamilton Pl, Mt Waverley. Ph. 9692 9400. Community-based outreach support for people with mental illness, Referrals/self-referrals welcome. Free program.

Reconnexion NFP Counselling, group therapy, phone support, anxiety disorders, depression, pills dependency. Ph. 1300 273 266. w: reconnexion.org.au e: info@reconnexion.org.au

Suicide Loss Support Group Free program explores 12 topics over 12 fortnights, beginning June. Limited to 8 people. Please phone 0434 533671 or 0417 523871.

Whitehorse Community Support Register Feel safe and secure at home. Confidential Whitehorse Register designed to help elderly, disabled or isolated. Ph. 8892 3385 (Mon–Fri 10am–noon).

History Groups

Balwyn Historical Society Balwyn Evergreen Centre, 45 Talbot Ave. Meet 8–9pm Thurs (Sept–May), 2pm Tues (June–Aug). Speakers on Balwyn & local history. e: balwynhistory@gmail.com w: home.vicnet.net.au/~balwynhs/

Box Hill Historical Society Inc. Mtg Rm 1, Library, 1022 Whitehorse Rd. 3rd Sun. (Feb–Nov) 2pm. Archives Box Hill Town Hall Tues. 11am 1st Sat. by appt. Ph. 9285 4808. e: boxhillhistory@gmail.com

Camberwell Historical Society Inc. Meeting Room, Camberwell Library, 340 Camberwell Road, Camberwell. Meets 4th Tuesdays 8pm. New members welcome. w: chs.org.au Ph. 9885 9927.

Family History Connections 1/41 Railway Rd, Blackburn. Ph. 9877 3789. Weekdays, online access, books. Research services, seminars, free beginners' classes. e: info@familyhistoryconnections.org.au w: familyhistoryconnections.org.au

Hawthorn Historical Society Local History Room, Hawthorn Library, Glenferrie Rd. 2nd & 4th Weds 11am–1pm. Members work & to learn about materials in collection. Ph. 9278 4666. e: hawthornhistoricalsociety@gmail.com

Surrey Hills Historical Society 190A Canterbury Road, Canterbury. 3rd Tues 8pm Feb–Nov. Single membership \$25 p/a. Visitors \$5.00 per meeting. Collection open Mondays e: Shhistory3127@gmail.com

Waverley Historical Society Inc., Above Mt Waverley library, Miller Cres (lift avail.). Have queries about Waverley's history? Visit Wed. 2–4pm or by appt. e: waverleyhsvic@gmail.com

Whitehorse Historical Society Inc. Local History Rm, Schwerkolt Cottage & Museum, Deep Creek Rd, Mitcham. Open for research Wed 10:30am–2:30pm. e: whitehorsehistory@hotmail.com Ph. 9873 4946. All welcome.

Local Markets

Boroondara Farmers' Market 1st, 3rd & 5th Sat, 8am–12:30pm. Patterson Reserve, Auburn Rd, Hawthorn. Entry \$2. Fresh pasta, organic fruit/veg etc. 60 stalls of fresh produce from all over Vic. Ph. 9278 4879.

Hawthorn Makers Market 1st Sun. (Mar–Dec) 10am–3pm. Free. Hawthorn Arts Centre, 360 Burwood Rd. Handmade homewares, jewellery, fashion, pot plants, gourmet food etc.

Mt Waverley Rotary Art & Craft Market Mt Waverley Village car park, Stephensons Rd. 2nd Sun each month 9am–2pm. 60 stalls of art, craft & food. Proceeds to many local & international causes.

Community Notices

As space is at a premium, please report any out-of-date notices to enable their updating or removal at freenotices@burwoodbulletin.org

Community Notices

Nunawading Market – Craft & Produce 4th Sun. Feb–Nov 9am–2pm. Dec. 2nd Sun. 1–5pm. Toys, clothing, jewellery, gifts, plants, gourmet foods, fresh produce. Whitehorse Civic Centre, 379–397 Whitehorse Rd.

Treasures & Tastes@Trinity 3rd Sat, 9am–1pm. Holy Trinity Anglican Church, 177 Union Rd. Surrey Hills Indoor boutique makers' & growers' market. Ph. 9890 2165.
e: treasuresandtastes@gmail.com

Whitehorse Farmers Market 2nd Sundays (8am–1pm) Whitehorse City Council's Civic Centre precinct, 379–397 Whitehorse Rd, Nunawading. Fresh fruit & vegetables, eggs, meat, fish, game meats, from the grower to you.

Mainly for Men

Alamein Men's Shed Alamein Neighbourhood & Learning, 49 Ashburn Grove, Ashburton Tues 9.30–11.30am and 12.30–2.30pm. \$30 per term & \$2 per session. Ph. 9885 9401.

Aviation Historical Society of Australia Meets 4th Wed. 7:30pm at Air Force Association, 24 Camberwell Rd, Hawthorn East. w: ahsa.org.au
e: membership@ahsa.org.au
Ph. 0418 530 001

BASScare The Canterbury Centre 2 Rochester Rd. Boroondara Blokes (over 55s) Fortnightly men's outing group.
e: socialsupport@basscare.org.au
Ph. 9880 4709.

Box Hill Prostate Cancer Support Group 9:30–11:30am, 3rd Tuesdays. Box Hill RSL Upton Room, Nelson Rd. Onsite parking. Ph. Bert Alesich 0418 344 057

East Malvern Men's Shed 51A Ivanhoe Grove. Tues & Wed 9am–3pm. Place for active retired men to meet those with similar interests.
e: info@eastmalvernmensshed.org.au

Hand Tool Preservation Association of Aust. Inc. Box Hill Community Arts Centre, 470 Station St. 7:30pm. 3rd Tues of Jan, Mar, May, Jul, Sep, Nov. Visitors welcome. Ph. 9803 9871.
e: secretary@htpaa.org.au

The Historical Radio Society of Australia We collect and restore radios. Visit one of our monthly meetings or radio auctions, usually in Ashburton. w: hrsa.asn.au Ph. Kevin 9558 3652.

Koonung Woodturners Guild Friendly group, 4th Sat. 9am–noon. Beginners' tuition Thurs. p.m. Koonung Cottage, 109 Koonung Rd, Nth Blackburn. Ph. 9890 9201
w: koonungwoodturners.com

Australian Model Railway Assoc. Vic. Branch Inc. 92 Wills St, Glen Iris. New members welcome. For membership /activities Ph. 9885 7034. w: amracvic.com.au

Monash Men's Shed 77 Bogong Ave, Bogong Reserve, Glen Waverley. Mon–Sat 9:30am–3pm. Activities for all ages. Drop in for a cuppa. Ph. 9561 8557.
e: info@monashshed.org.au

Number Plate Collectors' Club Plate enquiries welcome. All welcome to attend meetings & ask general questions. Contact David West. Ph 0417 993 369.
e: davidwest3152@gmail.com

Service Clubs

Blackburn Evening VIEW Club Supports Smith Family & Learning For Life students. Meets for dinner, Bucatini Rest'nt, 454 Whitehorse Rd Mitcham 2nd Thurs 7 for 7:30pm. Ph. Hazel 0407 845 292.

Box Hill/Mitcham Day VIEW Club Supporting the Smith Family & Learning for Life Students. 11:30am for Lunch 4th Mon Bucatini Restaurant, 454 Whitehorse Rd Mitcham. Visitors Welcome Ph. Elaine 9878 3211.

Burwood Evening VIEW Club Bucatini Restaurant, 454 Whitehorse Rd, Mitcham, 7pm 2nd Wed. Dinner/guest speaker. Visitors welcome. Ph. 9885 2336.
e: burwoodeveningviewclub@gmail.com

Burwood RSL Sub Branch Cnr Myrniong & Hyslop Sts. Meets Mon & Thurs 11am–4pm. Activities incl. billiards & snooker. Visitors & new members welcome. Ph. 0412 392099
e: jim@jlfs.com.au

Lions Club of Ashwood-Mt Waverley Lionsville Hall, 100 metres into Lionsville Senior Citizens Village, 88 Winbirra Parade, Ashwood. Meet first Wed, 7:30pm. Ph. Heather Lauder 0407 813 979.

Lions Club of Blackburn Men/women all ages. Friendly active club. Bus. Meeting: 1st Wed. 7pm Blackburn North Bowls Club. Social Dinner: 3rd Wed. 7pm "The Coach" Ringwood. New members welcome. Ph. Kate 0434 254 607.

Lions Club of Boroondara Central Glenferrie Hotel, 324 Burwood Rd, Hawthorn. Men/women all ages meet 2nd Tues, 6pm for 6:30pm. Friendly dinner/ business mtg. Ph. 9836 0541 or 0409 389 927.

Lions Club of Boroondara Gardiners Creek Bus. Mtgs: Craig Family Centre, Samarinda Ave, Ashburton, 2nd Mon, 7:30pm. Dinner Mtgs: Glenferrie Hotel, 4th Mon, 7pm. Ph. 9885 2682 or 0419 880 616.

Rotary Club of Box Hill Burwood Meets Upton Room, Box Hill RSL, 26 Nelson Rd, Box Hill, 1st, 3rd & 5th Tues 6pm–7:15pm. Social meetings 2nd & 4th Tues. Ph. Ray 0408 857 924.

Rotary Club of Box Hill Central Prof. women/men who enjoy helping the community/sharing fun times. Breakfast Wed 7:30am – no charge for 1st two visits. Box Hill Golf Club. Contact Liz Stinson.
e: info@boxhillcentralrotary.org.au

Rotary Satellite Club of Box Hill Central – Volunteering with Friends No weekly commitment. Dinners/ service activities monthly. Focus: women & children projects. Meeting details: satellite@boxhillcentralrotary.org.au

Rotary Club of Mont Albert and Surrey Hills Box Hill Institute Nelson Campus, Rm B10.G025 Ground Floor, Nelson Rd. Community service, friendship, guest speakers. First and Third Tuesdays 6.45 to 7pm. e: info@rotarymash.org.au

The Country Women's Assoc. of Vic. Inc. CWA Ashburton Branch. Meet 1st Tues 7pm. The Craig Family Centre Inc. Friendly active group.
e: cwa.ashburton@gmail.com

Sporting Clubs

Ashburton Bowls Club Enter off Warner Ave. Two grass greens; free coaching. 1st Sun. Barefoot bowls. Oct–April. Indoor winter bowls/cards. Memberships. Ph. 9885 4788.
w: ashburtonbowls.com

Bennettswood Bowling Club 179 Station St. Burwood. Ph. 9808 4373. 2 Tift Grass Greens. Summer/winter bowls (indoor mats). Barefoot Fri evening. Free coaching. e: benwoodbowls@gmail

Burwood District Bowls Club Barefoot Friday nights; function catering, fully licensed, Pennant bowls, Tue/Sat New members welcome.
Ph. 9889 5931 w: burwooddistrict.com.au

Burwood Tennis Club Enter off Queens Pde. A progressive & inclusive club offering coaching, competition, plus social tennis day & night, on five synthetic grass courts. Ph. 9830 6618.

Camberwell Central Bowls Club 14 Bowen St. Ph. 9889 4813 "Come Bowlin' on Bowen". Bowling all year. Summertime night bowls Free Coaching. New Members welcome.
w: camberwellbowlsclub.com.au

Camberwell Petanque Club Wakefields Grove. Ph. 0408 700 550. w: onpisteup.com Summer/Fri. pm. Winter/Sat. noon. Funny name, great game. Free coaching, social play &/or comps, home & away.

Camberwell Target Rifle Club Mon & Tues nights from 7:30pm. Coaching & equipment supplied. Ph. Cam 0499 756 187, Barry 0411 469 646 or Ross 0418 331 696.

Next Community Notices deadline: 1 February 2024

Email: freenotices@burwoodbulletin.org or phone Chris on 0413 412 844.



Although space is limited, if you have a suitable Community Notice listing, please email: freenotices@burwoodbulletin.org or phone Chris on 0413 412 844.

East Burwood Masters Athletics

Bill Sewart Athletics Track, East Burwood Reserve, Burwood Hwy. Thurs 7–9pm. Fun athletics & supper. Ph. 0403 910 183. w: vicmastersaths.org.au/vma-venues/east-burwood-masters-athletics/

East Malvern Senior Citizens

Bowling Club MECWA Hall, 57 Fisher St. Thurs 1:30–3:30pm. Indoor carpet bowls on two mats. Outings, more than just a bowls club. New members all ages welcome. Ph. 9555 8639.

Monash Croquet Club

Electra Community Centre, Electra Ave, Ashwood. Friendly atmosphere. Beginners' lessons. Ph. Ros, 9802 6545. e: monashcroquet@gmail.com w: croquetvic.asn.au

Phoenix Park Table Tennis Club

26 Rob Roy Rd, Malvern East. Mon & Thurs 5.30–9.30pm coaching/comps all ages. 10am–1pm seniors. Ph. Paul Bronstein 0412 804 036.

Unquenchables Rugby Union

Part of Box Hill RUFC. 35yo+. Less strenuous rugby. Exp. opt. Sat pm & Thurs eve. Refreshments and laugh after. w: unquenchables.com

Whitehorse Chevaliers Fencing Club

Nunawading, Vermont South. 'All ages' beginners, coaching & equipment provided. Free trial sessions available. Ph. 0450 556 330. w: whitehorsechevaliers.com

Ashburton Community Centre

Vacancies: Events Volunteers; Office Assistants 9am–2pm (flexible). Mgt Committee Members. Application form: ashburtoncc.org.au/our-volunteers

Ashy Op Shop, Ashburton

285b High St. We fund local Ashburton aged care services. Volunteer weekday or Sat/ Sun. Men and women welcome. Just 4 hours a week. Ph. Margaret 9885 3815. w: ashburtonsupport.org.au

Avenue Neighbourhood House @ Eley

Volunteers always welcome & form a vital part of our program. Opp. avail: reception, classes assist, drive small community bus, committees. Ph. 9808 2000 or e: info@theavenue.org.au

BASScare

The Canterbury Centre 2 Rochester Rd. Supporting older people. Vacancies avail. in meals on wheels, social support & connection. e: b.scicluna@basscare.org.au Ph. 0447 503 741.

Boroondara Central Lions Club Op Shop

1350C Toorak Rd, Camberwell (Burwood Village) Volunteers needed morning & afternoons, also emergencies. Ph. Margaret 0409 389 927 or leave details in Op Shop.

Bowen Street Community Centre, Camberwell

Family-focused centre. Need volunteers in childcare, office admin., Committee of Mgt, Vice-president, staff liaison, Treasurer. Ph. 9889 0791. w: bowenstreet.org.au

Canterbury Neighbourhood Centre

Volunteers interested in book clubs, dementia support; community mag. distribution. We're moving to Centre in Canterbury Gardens. Ph. 9830 4214 e: enquiries@canterburynh.org.au

Craig Family Centre

Be a homework tutor, committee member, community gardener, childcare or kinder helper. There are lots of volunteer opportunities! Ph. 9885 7789 e: enquiries@craigfc.org.au

Eastern Emergency Relief Network Inc.

Volunteer one morning per week. Drivers, Warehouse Coordinators & Assistants, Sorting/Pantry Crews, whitegoods servicers and qualified electrical testers, office admin. Ph. 9874 8433.

Greenlink Box Hill, Box Hill North

Indigenous plant nursery run by friendly volunteers in nursery or parklands. We produce over 40 000 indigenous plants each year. Sow seeds, take cuttings, etc. Open Tues & Wed 9am–noon. Ph. 0479 121 653 only on Tues & Wed. e: greenlinkboxhill@gmail.com

healthAbility/Whitehorse Repair Cafe

We are seeking volunteer Repairers to join our Cafe, which runs each 2nd Sat. of the month (Jan excepted). Have you skills/experience & would like to help reuse & keep items from landfill? Contact Stewart on e: Stewart.Blair@healthability.org.au

Inclusion Melbourne

Support adults with intellectual disabilities. Seeking volunteers as art mentor, friendly visitor, leisure buddy or tutor. Commitment of 6–12 months. Ph. 9509 4266 or email: volunteer@inclusion.melbourne

Knitted Knockers Australia, Burwood

Admin Assist. (KKA supports breast cancer survivors). e: knittedknockersaustralia@gmail.com

Louise Multicultural Community Centre, Box Hill

Tutors (English & Computer), Office Admin. & Project volunteers. Help support and encourage social harmony in a safe environment. Ph. 9285 4850. e: programs@louise.org.au

MND (Motor Neurone Disease) Victoria

Provide care and support for people with MND, including services to support their carers, etc. Volunteers undertake a range of roles/responsibilities. Ph. 9830 2122.

MS Community Visitors Scheme

Just like you but older – Would you like to visit older people who would benefit from friendship? We have people who live in aged care or their own homes waiting to be matched to a visitor for friendship & companionship. Ph. 9845 2729.

Neighbourhood Watch Whitehorse

Volunteer for 'Caring for Communities'. Support local area groups. Ph. Ray 0418 596 831 e: whitehorse@nhw.com.au

Peridot Theatre Inc.

Community theatre co. in eastern suburbs for 35 years. Interested in theatre? Secretarial/bookkeeping skills highly valued. w: peridot.com.au Ph. Helen: 0429 115 334.

Volunteer

Power Neighbourhood House, Ashwood

Our mission is to achieve community participation by providing support, referral & activities in a friendly non-judgemental environment. Committee members needed. Ph. 8849 9707.

RSPCA, Burwood East

3 Burwood Hwy. Ph. 9224 2222. Many volunteer roles: office admin, events, grounds maint. Or attend info session re animal care. Min. age 15.

Samarinda – local for local

Meals-on-Wheels drivers, Bus excursions, Seniors transport to attend activities. Gardeners, kitchen/café assistants, Ashy Op Shop staff. Ph. 1300 591 464. e: volunteer@saas.org.au

Uniting East Burwood

Community Workers – info: <https://burwoodbulletin.org/volunteer-2/> Complete training course in seven online sessions, on-site mentoring, police check, current Working with Children Check. Ph. 9803 3400.

Uniting Op Shop, Forest Hill

Volunteers needed to join the team at our newly renovated Op Shop. Phone Don on 0411 490 365 for details.

Wesley Do Care – Active Ageing

Works with elderly people/disabled who want to take part in interests & social activities. We need volunteers happy to share interests, activities & companionship. Ph. 9794 3000.

Youth Education Support Inc. (YES)

Help disadvantaged youth to gain an education. Volunteers for Op Shop needed, 53 Mahoneys Rd Forest Hill. Ph. 9894 0992.

THE BULLETIN VOLUNTEER VACANCIES

- Editor/Assistant editor
- Advertising coordinator
- Writers

Contact Chris on 0413 412 844 or email editor@burwoodbulletin.org



WHAT'S ON LOCALLY

To publicise local once-off events, markets or theatre productions, etc. in our autumn issue (March–May) please email editor@burwoodbulletin.org

VENUE KEY:

- ACC – Ashburton Community Centre, 160 High St.
- AL – Ashburton Library, 154 High St, Ashburton.
- BFM – Boroondara Farmers' Market, 484 Auburn Rd, Hawthorn.
- BHCAC – Box Hill Community Arts Centre, 470 Station St, Box Hill.
- BTH – Box Hill Town Hall, 1022 Whitehorse Road, Box Hill
- BYH – Boroondara Youth Hub L1, 360 Burwood Road Hawthorn.
- CFS – Camberwell Film Society, Camberwell Community Centre, 33-35 Fairholm Grove, Camberwell.
- CL – Camberwell Library, 340 Camberwell Rd.
- CMS – Camberwell Music Society, Camberwell Uniting Church, 314 Camberwell Rd.
- CT&T – Car park adjacent to Station St and Riversdale Rd, Camberwell (behind Burke Rd shopping strip).
- HAC – Hawthorn Arts Centre, Ph. 9278 4770 360 Burwood Rd.
- HTSH – Holy Trinity Surrey Hills, Cnr Union Rd & Montrose St, Surrey Hills.
- PT – Peridot Theatre, Clayton Community Centre, 9 Cooke St. tickets@peridot.com.au or 0429 115 334.
- R – The Round (Located behind the Whitehorse Civic Centre (see WC)
- THG – Town Hall Gallery, 360 Burwood Road Hawthorn.
- WC – Whitehorse Centre, Rear 379-397 Whitehorse Rd, Nunawading
- WFS – Whitehorse Film Society, Whitehorse Centre, 379 Whitehorse Rd, Nunawading.

REGULAR EVENTS (MARKETS)

Fourth Sun each month 9am–2pm Arts Nunawading Market Shop local at the Make it, Bake it, Grow it, Nunawading Market. Free entry/ample free parking. [WC]

1st, 3rd & 5th Sat 8am–12.30pm Boroondara Farmers' Market Patterson Reserve, Auburn Rd, Hawthorn East. No 5th week market in December. Cost \$2.

Every Sun 6:30am–12.30pm Camberwell Trash & Treasure About 370 stalls; second-hand goods, antiques, bric-a-brac, collectibles, hardware, preloved, vintage/retro clothes & shoes, books, music. [CT&T]

Every Sun 10am–3pm Hawthorn Makers Market Curated designer market selling a wide range of individually designed and handcrafted items. [HAC]

Third Sat each month 9am–1pm Treasures and Tastes at Trinity Hand-crafted items, baked treats & plants. Sausage sizzle & Treasures cafe. Fun kids' craft table, free activities, plus chance to win a \$30 voucher at each market. w: treasurestastetrinity.com.au [HTSH]

DECEMBER

Until Mon 12 Feb 10:30am–12 noon Walk for carers – Neighbourhood Carers Club. Supports unpaid carers of a loved one with a disability, mental illness or aged person. Go for a walk & chat about all things related and unrelated to being a carer over a cuppa. Surrey Hills Neighbourhood Centre, 157 Union Rd.

Sun 3 Dec 2pm & 7:30pm Box Hill Ballet Assoc. Annual Performance Doncaster Secondary College Performance Centre, 123 Church Rd.
Bookings: www.boxhillballet.com.au

Wed 6 Dec – Sat 17 Feb Marked Exhibition featuring highlights from the publication *Marker: 10 Years of the Town Hall Gallery Collection*. Presents seminal works featuring influential pieces in the Collection illustrating the storytelling potential of public collections. Ph. 9278 4770. [HCAC]

Second Sun each month 9am–1pm Whitehorse Farmers' Market Organised/managed by Whitehorse Rotary & Rotaract Clubs, features stalls selling fresh seasonal produce in front of the Civic Centre building. [WC]

REGULAR EVENTS (OTHER)

Third Tues each month 2–4pm Family history group. Learn about the resources available for family history research & how to use them. Share family history stories/help each other with ideas for what to do next. [CL]

Every 1st Mon 4–5pm STEAM Club for kids – Ashburton. Fun session of science, technology, engineering, arts & maths. Each month we will explore different topics by getting hands-on. Age: primary school. Please book tickets for each child attending. [AL]

Every 2nd Sat Feb–Dec 10am–2pm healthAbility/Whitehorse Repair Cafe. Instead of feeding landfill, come & have broken items fixed whilst sharing tea/coffee. Gold coin donation. Strathdon House Orchard Precinct, 449-465 Springvale Rd, Forest Hill

Fri 8 Dec 8–9:50pm Christmas Swing Party. Melbourne's best Swing, Jazz & RnB band, Steve Purcell & the Pearly Shells, will perform a set including generous helping of Christmas songs to get you in the holiday spirit. Cost \$40. Ph. 9278 4770 or book online. [HAC]

Sun 10 Dec 10:30am–12noon Kids Christmas Stockings Guided by our friendly tutor, your child will create an adorable Christmas Stocking out of felt, making a unique item that they can use for years to come. Materials incl. Cost: \$42. [BHCAC]

Sun 10 Dec from 3:30pm – Christmas Carnival & Carols in the Courtyard. Games, food, jumping castle, sausage sizzle! St Thomas Burwood, 44 Station St.

Sun 10 December 1–5pm Arts Nunawading & Whitehorse Farmers Christmas market. Ample free parking. [WC]

Wed 13 Dec 7.30pm *Bran Nue Dae* Aust., 2009, M. A rebellious young man runs away from home but returns after experiencing an amazing journey. CHRISTMAS PARTY TONIGHT! Note: screens a week earlier than usual. [CFS]

Sat 16 Dec 6:30–9.30pm *Whitehorse Carols*. Jingle your bells and fasten your antlers! Whitehorse Carols is serving up a feast of festivities for the family this Christmas. Rides & Amusements from 5.30pm. [WC]

Sun 17 Dec 10:30am *Yarra Gospel Choir performs at St Tom's*. St Thomas Burwood, 44 Station St.

Sun 17 Dec 5pm *Christmas BBQ and Carol Service* starting at 5pm for BBQ and then followed by carol service. All welcome. Wattle Park Chapel 234 Elgar Rd, Box Hill South.

Sun 17 Dec 2:30pm *Melbourne Tramways Brass & Big Band* Wattle Park, cnr of Riversdale & Warrigal roads, Surrey Hills. Free. Check for cancellation due to weather on 131 963. Any requests: e: exec@melbtramband.org.au

Sun 17 Dec 6:30pm *Community Carols feat. Canterbury Tongan Men's Choir* Ashburton Uniting, 3 Ashburn Gve.

JANUARY

Until Sat 17 Feb *Marked* Exhibition featuring highlights from the publication *Marker: 10 Years of the Town Hall Gallery Collection*. Presents seminal works featuring influential pieces in the Collection illustrating the storytelling potential of public collections. Ph. 9278 4770. [HCAC]

Sat 20 Jan 10:30am; 1:30pm *Teeny Tiny Stevies*. A show based on the simple idea that a great live band is compelling for any age group. Cost: \$35, Conc. & Child (2–14 years), \$25. Ph. 9262 6555 or book online. [R]

Wed 21 Feb 11am *Michael Cormick Sings Bacharach* Internationally renowned artist Michael Cormick will perform timeless classics as Say a Little Prayer and I'll Never Fall in Love Again. Single \$23, Group \$21 Ph. 9262 6555 or book online. [R]



FEBRUARY

Until Sat 17 Feb *Marked* Exhibition featuring highlights from the publication *Marker: 10 Years of the Town Hall Gallery Collection*. Presents seminal works featuring influential pieces in the Collection illustrating the storytelling potential of public collections. Ph. 9278 4770. [HCAC]

Fri 2 Feb 8pm *Zeppelin UnLedded – The Page & Plant* Years Celebrates Led Zeppelin's unique blending of rock/folk music by incorporating a Middle Eastern Trio and String Quartet. Adult: \$79.90; Concession (All): \$69.90. Ph. 9262 6555 [R]

Sat 3 Feb 7:45pm *The Bank of Dave* UK, 2023, M Based on the true-life experiences of Dave Fishwick, tells of how a working class Burnley man and self-made millionaire fought to save a community bank. [WFS]

Sat 10 Feb 7:30pm *Martha – The Fair at Richmond*. Flotow's famous romantic opera Martha in this new production saluting the touring companies of Victoria's Gold Rush era. Adult: \$40; Con. \$35 Child (14&U): \$30 Family of 4: \$120. [R]

Sat 17 Feb 7:45pm *The Blue Caftan* FRANCE+, 2022, M Halim and Mina run a traditional caftan store in Morocco. To keep up with demanding customers, they hire a talented young man as an apprentice. Slowly Mina realises how much her husband is moved by his presence. [WFS]

Sun 25 Feb 2:30pm *Melbourne Tramways Brass Band* Wattle Park, cnr of Riversdale & Warrigal roads, Surrey Hills. Free. Check for cancellation due to weather on 131 963. Any requests: e: exec@melbtramband.org.au

BOX HILL BALLET
presents

CARNIVAL
of the
ANIMALS

The
JEWELLERY BOX

Plus other
classical, tap,
jazz,
contemporary
and
international
dance items

Save the date
Tickets on sale November
www.boxhillballet.com.au

Sunday 3 December, 2023

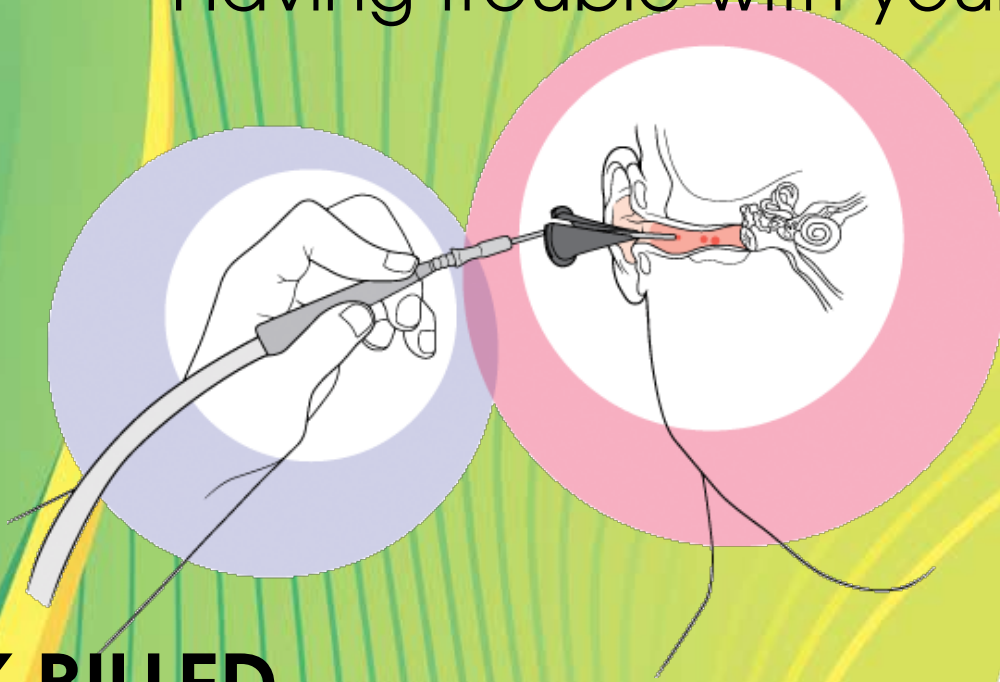
Matinee 2pm
Evening 7.30pm

Doncaster Secondary College, Presentation and
Performance Centre, 123 Church Rd, Doncaster
Supported by Whitehorse Council Community Grants Program



Wax-Blocked Ears

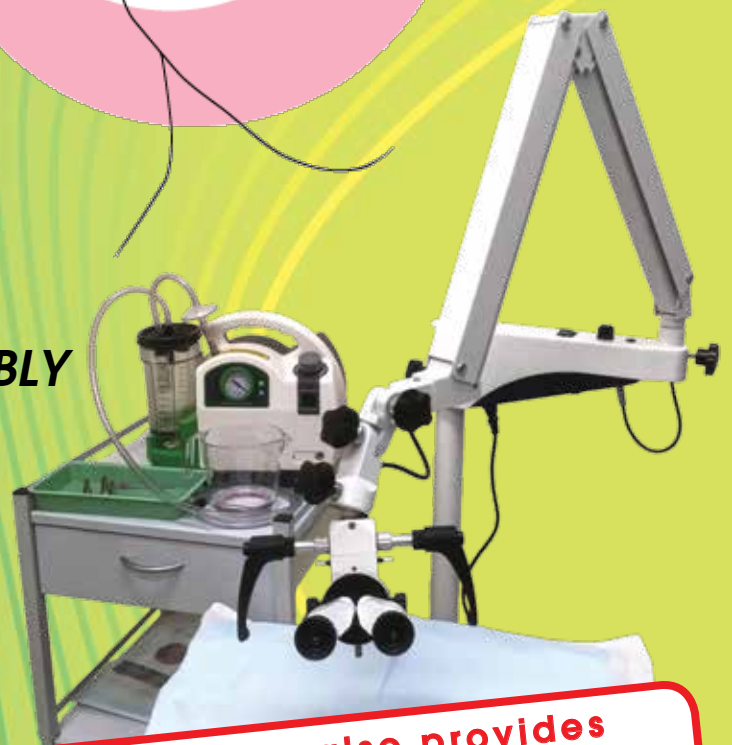
Having trouble with your ears?



BULK BILLED

REMOVE EAR WAX COMFORTABLY

Camberwell East Medical Centre provides safe, effective and professional ear wax removal using Micro-suction technology performed by a Registered GP.



**Our Clinic also provides
Mole and Skin Cancer Checks
- Bulk Billed**



**East Camberwell Medical Centre
236 Warrigal Rd**

Toorak Rd

Warrigal Rd

Burwood Highway

CAMBERWELL EAST MEDICAL CENTRE

236 Warrigal Road Camberwell

Phone 9889-8000